

A

B

C

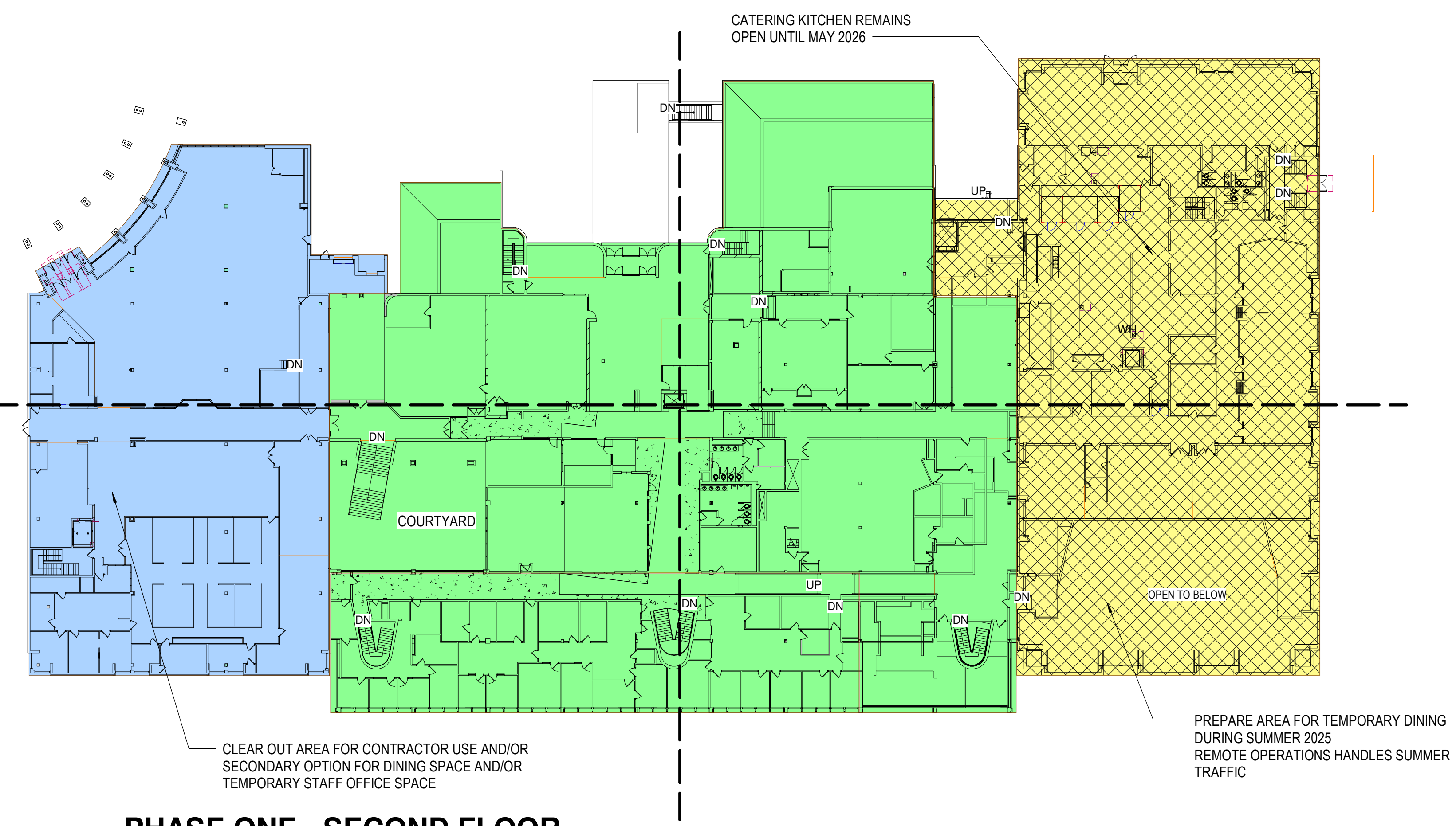
D

E

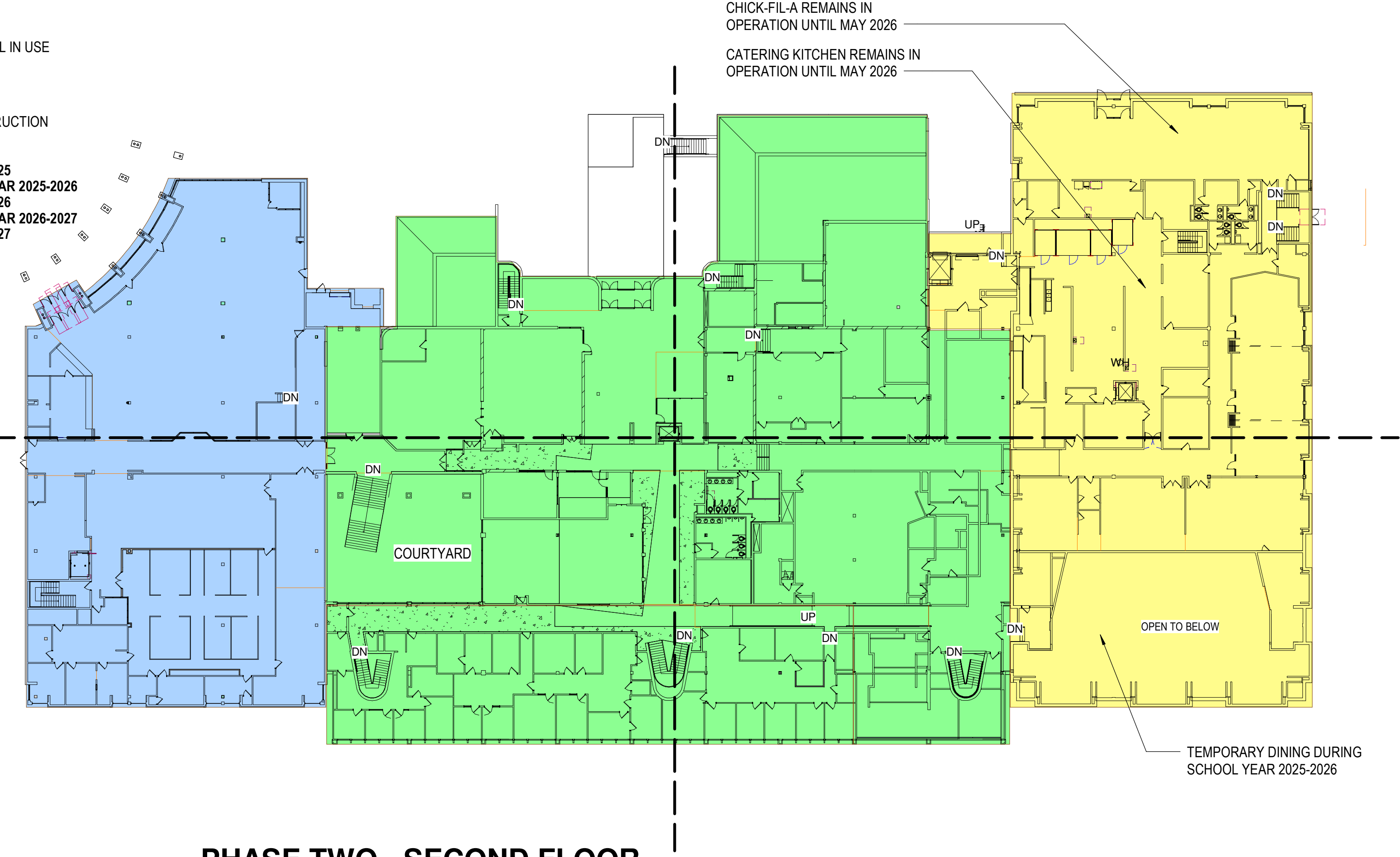
PHASING LEGEND

- EXISTING CONDITIONS - STILL IN USE
- TEMPORARY PHASE
- UNDER CONSTRUCTION
- COMPLETED AND IN USE
- STAGING AREA FOR CONSTRUCTION

- KEY**
- PHASE ONE (1): SUMMER 2025
 - PHASE TWO (2): SCHOOL YEAR 2025-2026
 - PHASE THREE (3): SUMMER 2026
 - PHASE FOUR (4): SCHOOL YEAR 2026-2027
 - PHASE FIVE (5): SUMMER 2027



PHASE ONE - SECOND FLOOR

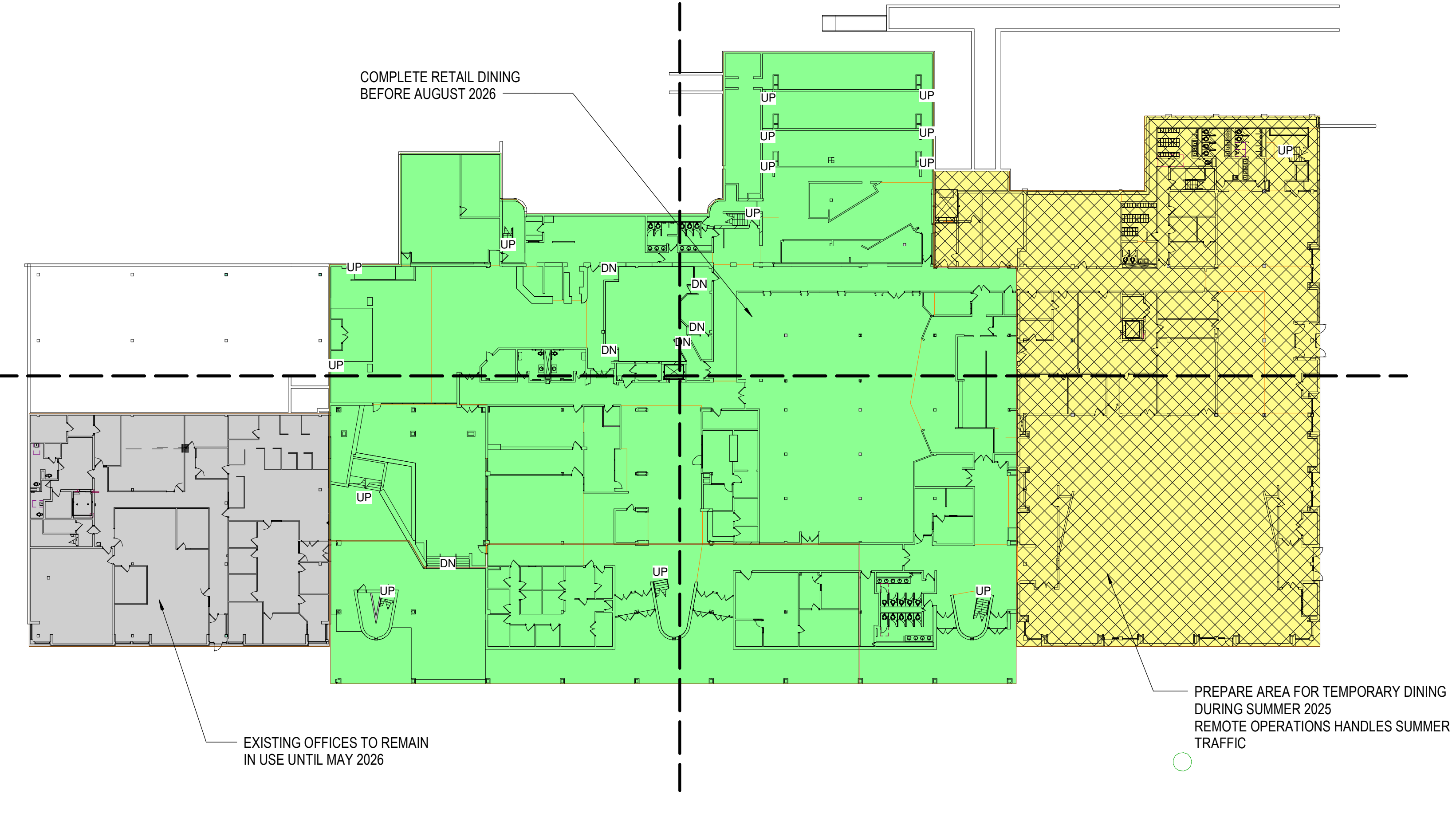


PHASE TWO - SECOND FLOOR

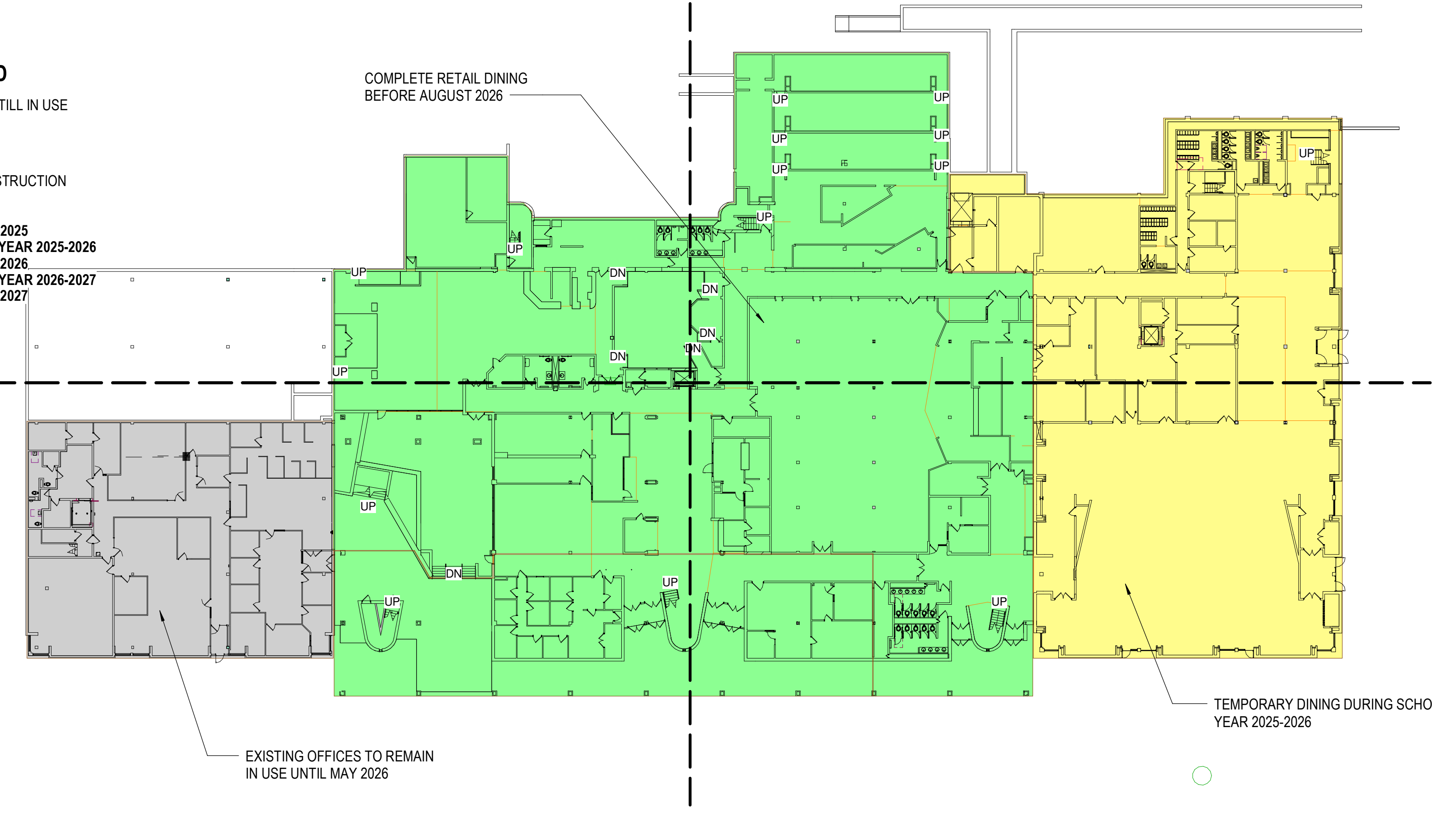
PHASING LEGEND

- EXISTING CONDITIONS - STILL IN USE
- TEMPORARY PHASE
- UNDER CONSTRUCTION
- COMPLETED AND IN USE
- STAGING AREA FOR CONSTRUCTION

- KEY**
- PHASE ONE (1): SUMMER 2025
 - PHASE TWO (2): SCHOOL YEAR 2025-2026
 - PHASE THREE (3): SUMMER 2026
 - PHASE FOUR (4): SCHOOL YEAR 2026-2027
 - PHASE FIVE (5): SUMMER 2027



PHASE ONE - FIRST FLOOR



PHASE TWO - FIRST FLOOR

Rev	Date	Comment

NOT FOR CONSTRUCTION

STUDENT CENTER RENOVATION

YOUNGSTOWN STATE UNIVERSITY

Phasing Plans

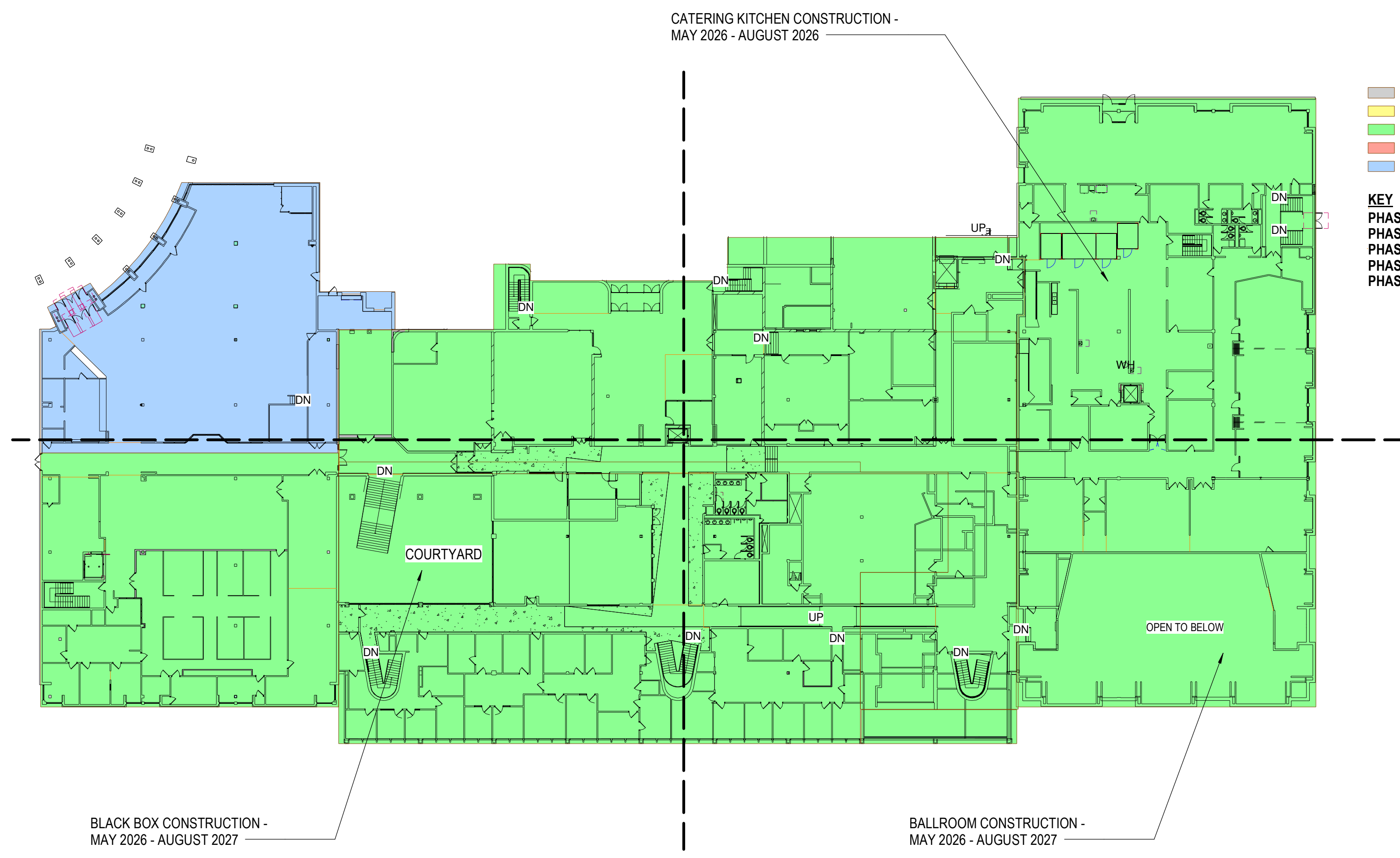
50% DESIGN DEVELOPMENT

WTW PROJECT NO. 72-3046 © WTW ARCHITECTS 2024

AP2.1

A

B

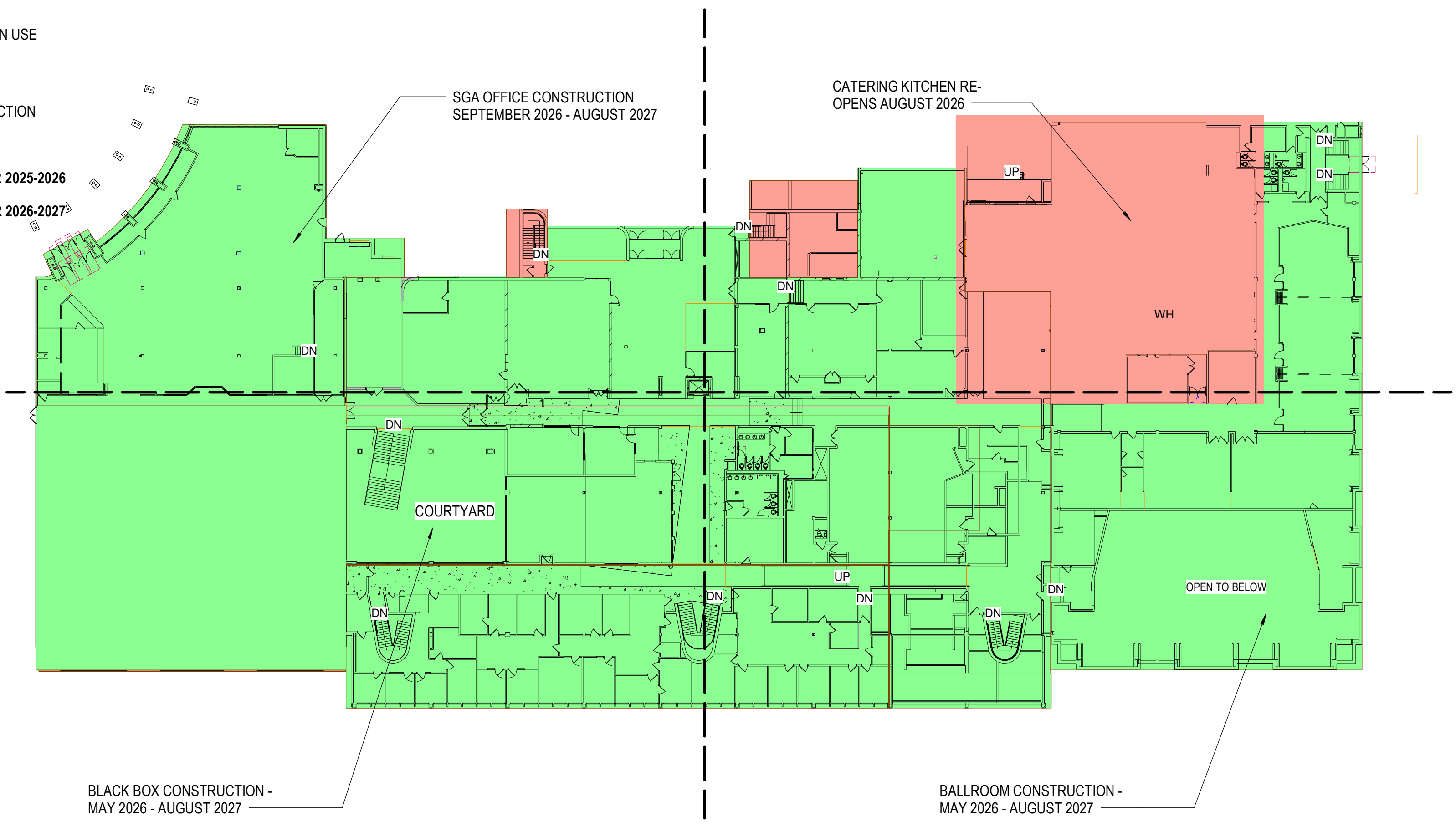


PHASING LEGEND

- EXISTING CONDITIONS - STILL IN USE
- TEMPORARY PHASE
- UNDER CONSTRUCTION
- COMPLETED AND IN USE
- STAGING AREA FOR CONSTRUCTION

KEY

- PHASE ONE (1): SUMMER 2025
- PHASE TWO (2): SCHOOL YEAR 2025-2026
- PHASE THREE (3): SUMMER 2026
- PHASE FOUR (4): SCHOOL YEAR 2026-2027
- PHASE FIVE (5): SUMMER 2027

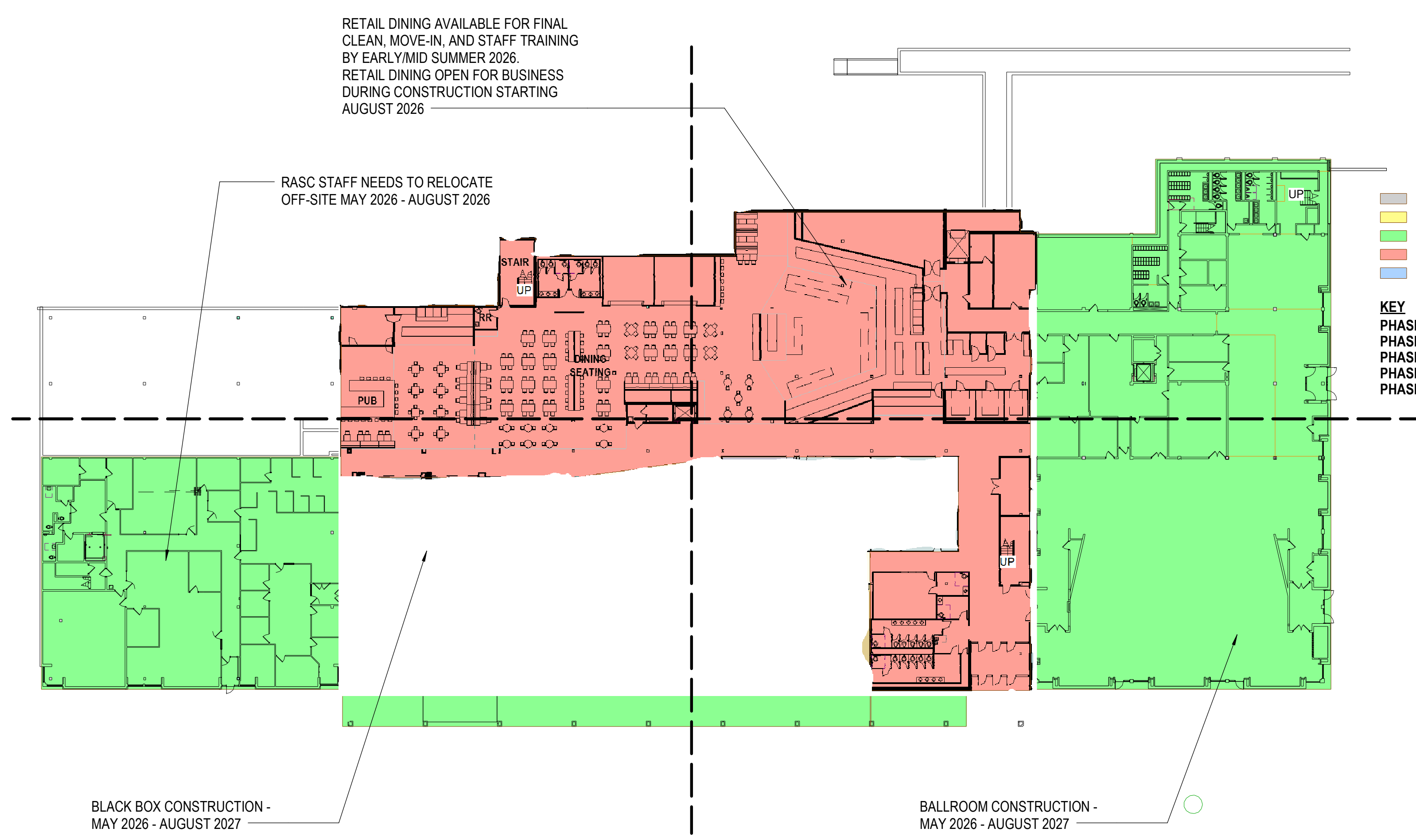


PHASE THREE - SECOND FLOOR

PHASE FOUR / FIVE - SECOND FLOOR

C

D

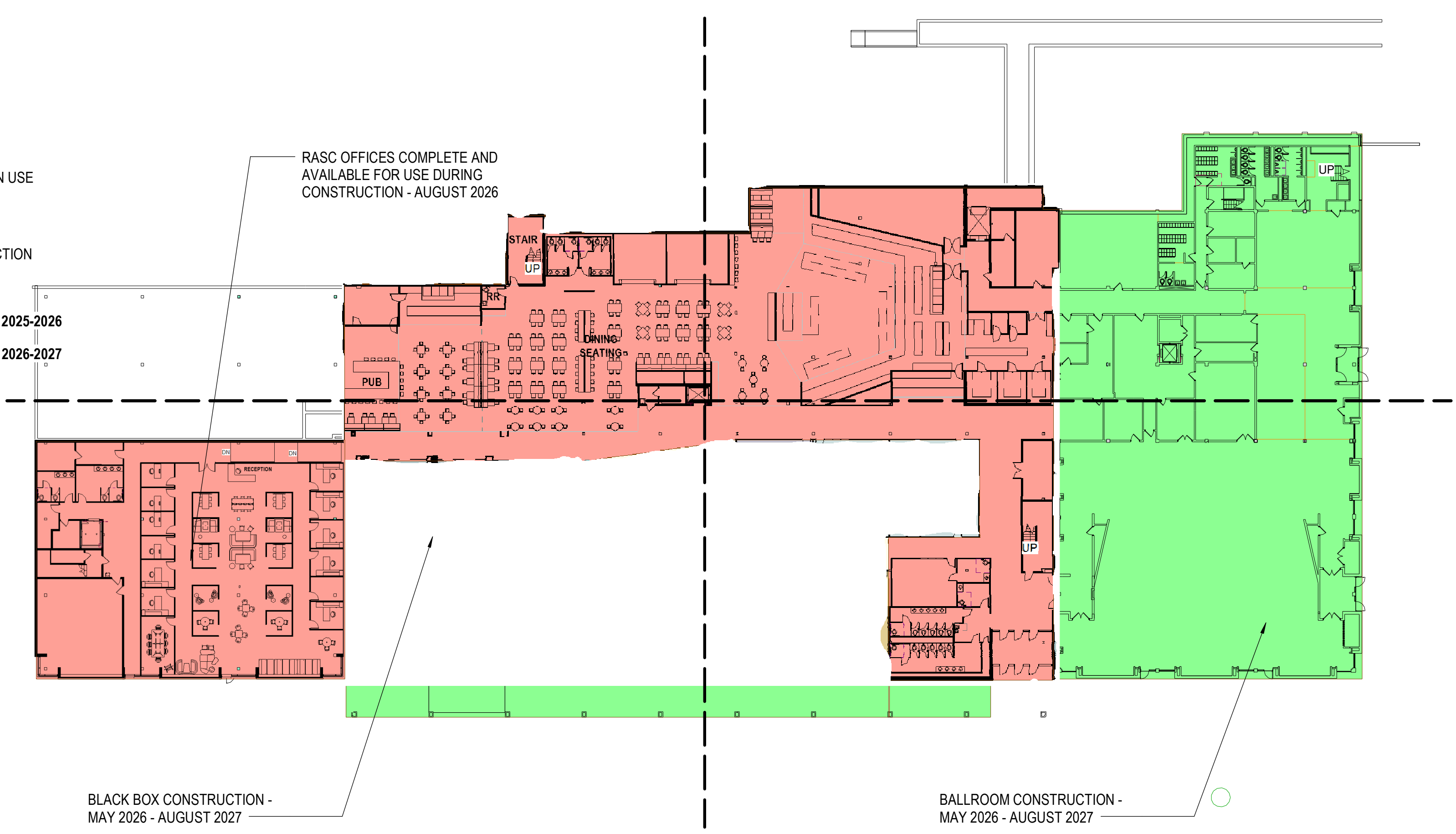


PHASING LEGEND

- EXISTING CONDITIONS - STILL IN USE
- TEMPORARY PHASE
- UNDER CONSTRUCTION
- COMPLETED AND IN USE
- STAGING AREA FOR CONSTRUCTION

KEY

- PHASE ONE (1): SUMMER 2025
- PHASE TWO (2): SCHOOL YEAR 2025-2026
- PHASE THREE (3): SUMMER 2026
- PHASE FOUR (4): SCHOOL YEAR 2026-2027
- PHASE FIVE (5): SUMMER 2027



PHASE THREE - FIRST FLOOR

PHASE FOUR / FIVE - FIRST FLOOR

E

Rev	Date	Comment

NOT FOR CONSTRUCTION

ISSUED: 02/29/24
STUDENT CENTER RENOVATION

YOUNGSTOWN STATE UNIVERSITY

Phasing Plans

50% DESIGN DEVELOPMENT
WTW PROJECT NO. 72-3046
© WTW ARCHITECTS 2024

AP2.2