



**YOUNGSTOWN  
STATE  
UNIVERSITY**

**BOARD OF TRUSTEES  
INSTITUTIONAL ENGAGEMENT COMMITTEE**

**Molly S. Seals, Chair  
Michael A. Peterson, Vice Chair  
All Trustees are Members**

**BACKGROUND MATERIALS  
June 5, 2019**

- |  |              |
|--|--------------|
| <b>1. YSU Department Emergency Plan Example</b>        | <b>Tab 1</b> |
| <b>2. Alumni and Events Calendar</b>                   | <b>Tab 2</b> |
| <b>3. Alumni Outreach</b>                              | <b>Tab 3</b> |
| <b>4. Marketing Communications Campus News of Note</b> | <b>Tab 4</b> |



**YOUNGSTOWN  
STATE  
UNIVERSITY**

# **EMERGENCY OPERATION PLAN**

**Ward Beecher Hall**

**Moser Hall**

**Meshel Hall**

**Lincoln Hall**

College of Science, Technology, Engineering and Mathematics

# Table of Contents

<b>Introduction.....</b>	<b>4</b>
<b>Emergency Defined.....</b>	<b>4</b>
<b>Reporting Emergencies.....</b>	<b>5</b>
Anonymous Reporting.....	5
<b>Building and Department Contact Information .....</b>	<b>6</b>
<b>Incident Command System.....</b>	<b>7</b>
<b>Communications .....</b>	<b>8</b>
<b>Crime Prevention .....</b>	<b>9</b>
<b>Security and Tram Escorts .....</b>	<b>9</b>
<b>Lock-down and Shelter in Place.....</b>	<b>10</b>
<b>Lock Down.....</b>	<b>10</b>
<b>Shelter in Place.....</b>	<b>11</b>
<b>Building and Campus Evacuations.....</b>	<b>12</b>
<b>Building Evacuation.....</b>	<b>12</b>
Building Evacuation Maps.....	13
Ward Beecher 1 <sup>st</sup> Floor.....	13
Ward Beecher 2 <sup>nd</sup> Floor.....	14
Ward Beecher 3 <sup>rd</sup> Floor.....	15
Ward Beecher 4 <sup>th</sup> Floor.....	16
Ward Beecher 5 <sup>th</sup> Floor.....	17
Ward Beecher 6 <sup>th</sup> Floor.....	18
Moser Hall Basement.....	19
Moser Hall 1 <sup>st</sup> Floor.....	20
Moser Hall 2 <sup>nd</sup> Floor.....	21
Moser Hall 3 <sup>rd</sup> Floor.....	22
Moser Hall 4 <sup>th</sup> Floor.....	23
Lincoln Hall 1 <sup>st</sup> Floor.....	24
Lincoln Hall 2 <sup>nd</sup> -6 <sup>th</sup> .....	25
Meshel Hall Basement.....	26
Meshel Hall 1 <sup>st</sup> Floor.....	27
Meshel Hall 2 <sup>nd</sup> Floor.....	28
Meshel Hall 3 <sup>rd</sup> Floor.....	29
<b>Campus Evacuation.....</b>	<b>30</b>
Campus Evacuation Map.....	31
<b>Active Shooter, Assault, and Human Trafficking .....</b>	<b>32</b>
<b>Active Shooter: .....</b>	<b>32</b>
<b>Workplace Violence &amp; Unruly Individuals .....</b>	<b>33</b>
<b>Sexual Assault: .....</b>	<b>34</b>
<b>Human Trafficking:.....</b>	<b>34</b>
<b>Terroristic and Civil Related Incidents .....</b>	<b>36</b>

<b>Terrorism:</b> .....	<b>36</b>
<b>Hostage Situations:</b> .....	<b>36</b>
<b>Civil Disturbance:</b> .....	<b>36</b>
<b>Bomb Threats:</b> .....	<b>37</b>
<b>Suspicious Package or Mail:</b> .....	<b>37</b>
<b><i>Mental Health Related Incidents</i></b> .....	<b>38</b>
<b>Suicidal Persons:</b> .....	<b>38</b>
<b>Mental Health/Counseling Services:</b> .....	<b>39</b>
<b>Student Outreach and Support:</b> .....	<b>39</b>
<b><i>Medical Related Incidents</i></b> .....	<b>40</b>
<b>General Medical Emergencies:</b> .....	<b>40</b>
<b>Blood-Borne Pathogens:</b> .....	<b>40</b>
<b>Medical Pandemic:</b> .....	<b>41</b>
<b>Poison Control:</b> .....	<b>41</b>
<b>Drug Overdose:</b> .....	<b>41</b>
<b>Unidentified Drugs and Paraphernalia:</b> .....	<b>42</b>
<b><i>Fire and Chemical Related Incidents</i></b> .....	<b>43</b>
<b>Fire:</b> .....	<b>43</b>
<b>Explosion:</b> .....	<b>44</b>
<b>Chemical Release:</b> .....	<b>44</b>
<b>Nuclear Incident:</b> .....	<b>45</b>
<b><i>Weather Related Incidents</i></b> .....	<b>46</b>
<b>Tornado:</b> .....	<b>46</b>
<b>Earthquake:</b> .....	<b>47</b>
<b>Flood:</b> .....	<b>47</b>
<b><i>Disruption of Public Services</i></b> .....	<b>48</b>
<b>Power Outages:</b> .....	<b>48</b>
<b>Water Outage/Restriction:</b> .....	<b>48</b>
<b>Gas Leak:</b> .....	<b>48</b>
<b><i>Campus Map</i></b> .....	<b>49</b>

## **Introduction**

**Purpose:** This plan is an effort to protect employees, students, and visitors. The plan is meant to maximize human safety and survival, minimize danger, preserve and protect property and critical infrastructure, provide for responsible communications with the University community during and after an emergency, and finally to restore normal activities as soon as possible.

The plan outlines the expectations of faculty, staff, and students as well as providing authority for personnel to enact the plan as needed. The plan identifies internal and external communications; authority and references as defined by state mandates and actions the University will use for prevention, protection, mitigation, response, and recovery.

The Departmental Emergency Operation Plans stem from the “Campus Emergency Management Plan” (CEMP). The CEMP reflects the uniqueness of the campus location while conforming to the essential common elements set forth in the Guidebook policy number 3356-4-20 “Emergency Response”.

## **Emergency Defined**

An Emergency is any event or condition that presents an imminent risk of death, serious injury or illness to the University Community, suspension or significant disruption of university operations, significant physical or environmental damage, or significant threat to the University’s financial wellbeing.

Rather than establishing rigid parameters for qualifying an event as an emergency, this definition is intended to emphasize the actual and potential catastrophic effect, the imminent threat, and seriousness inherent to emergencies. Other events may produce crises or harmful effects but an emergency is distinguished by the severity of the threat and its effects as well as the ongoing threat posed to the University Community.

### **Revision History:**

4/18/2019                      Emergency Plan Evacuation Maps Updated

### **To update or correct this emergency operation plan contact:**

Ofc. William Rogner (330) 941-7496                      whrogner@ysu.edu

## Reporting Emergencies

Anyone witnessing a safety, security or medical related incident in or near the University should secure their immediate safety, and the safety of those involved and around the incident. Call the YSU Police Department and provide the dispatcher with the following information:

- Incident Location.
- Incident Description.
- Injuries.
- Your Name and Contact Information.

Follow the dispatcher's instructions and do not hang up until directed to do so.

**If you are on campus call extension 3527 or 911 from a campus phone.**

**If you are off campus or calling from a cell phone, dial (330) 941-3527.**

**Remember: If you see something, say something!** The YSU Police are available 24 hours a day, 7 days a week.

**Important:** You can reach the YSU Police on campus phones (the phones in your office and in campus buildings) by either dialing 911 or extension 3527. If you are using a cellphone you **must** dial (330) 941-3527 to contact the YSU Police. If you dial 911 from your cellphone, you will be connected with the Youngstown City Police dispatcher.

## Anonymous Reporting

The University provides online anonymous reporting options for complaints of sexual misconduct and the University will not compel you to reveal your name or that of the alleged perpetrator. However, the University's ability to investigate an incident is limited when names are not included in a report. In order for the University to take disciplinary action against an individual for sexual misconduct, either under University Policy or the Student Conduct Process; the individual's name must be provided.

Making an initial anonymous report does not prevent an individual from choosing to follow-up with additional information or through a different reporting option. Anonymous reports can be made to:

The Youngstown State University Police Department at the [YSU Police website](#)

The Title IX Coordinator at [Title IX Home](#)

The Office of Student Life/Student Conduct at [Student Conduct: Complaint Filing](#)

## Building and Department Contact Information

Academic Department	Name	Title	Contact
College of Science, Technology, Engineering and Mathematics	Dr. Wim Steelant	Dean	(330) 941-3009
Biological Sciences	Dr. Gary Walker	Chair	(330) 941-3600
Chemistry	Dr. Timothy Wagner	Chair	(330) 941-3662
Physics/Astronomy	Dr. Gregg Sturuss	Chair	(330) 941-7113
Geological and Environmental Sciences	Dr. Jeff Dick	Chair	(330) 941-3612
Mechanical/Industrial Engineering	Dr. Hazel Marie	Chair	(330) 941-3015
Civil/Environmental Engineering	Dr. Douglas Price	Chair	(330) 941-3019
Electrical Engineering	Dr. Jalal Jalali	Chair	(330) 941-1750
Engineering Technology	Dr. Carol Lamb	Chair	(330) 941-4625
Mathematics and Statistics	Dr. Thomas Wakefield	Chair	(330) 941-3302
Math Assistance Center	Julie Seitz	Interim Director	(330) 941-3046
Computer Science (CSIS)	Dr. Coskun Bayrak	Chair	(330) 941-3120

## Incident Command System

The Incident Command System (ICS) is a standard, on-scene, and all-hazard emergency management system adopted by Youngstown State University in the event of a large scale declared emergency which has the possibility for extending into longer periods of time. It represents organizational “best practices” and has become the national standard for incident response. Under this model, there is only one Incident Commander who is the person in charge of the incident. The nature of the emergency determines the position responsible for incident command. Depending upon the nature of an emergency, the Incident Commander may be a different individual not necessarily from the University. The following matrix is an example of who may fill the role of an Incident Commander in particular emergencies.

- Active Shooter: Ranking YSU Police Supervisor on scene
- Fire: Ranking Youngstown Fire official on scene
- Building Collapse: Ranking Youngstown Fire official on scene/ AVP YSU Facilities
- Chemical Spill: Mahoning County Hazmat Team Supervisor
- Bomb Threat: Ranking YSU Police Supervisor on scene
- Power Outage: AVP YSU Facilities

*Incident Command Post:* The Incident Command Post (ICP) is the location from which the Incident Commander manages all incident operations. The ICP may or may not be located on the campus depending on the scope of the emergency. The ICP may be in an office, conference room, or other area that has the necessary communication resources, safety, and security during an emergency.

*Emergency Operations Center:* The Emergency Operations Center (EOC) is the location from which the coordination of information and resources to support long term emergency operations (24 hours or more) occur. **When an emergency is confined to campus property and facilities, the YSU Police Department (Clingan-Waddell Hall) serves as the location of the EOC.** Functions conducted at the EOC include:

- Coordination.
- Communications.
- Resource dispatch and tracking.
- Information collection, analysis, and dissemination.



## Communications

Tools or methods the University may use to communicate to students and employees in the event of an emergency can include:

- **Penguin Alert:** The Penguin Alert allows the University to notify students and employees via text messages and email. **To sign up for the Penguin Alert, go to [alert.yosu.edu](http://alert.yosu.edu).** A valid YSU logon (banner logon) and password are necessary. Registration can be completed anywhere there is internet access.
- **Campus Wide Paging System:** The Simplex 4100U alarm system is a highly flexible and survivable platform that offers digital voice communications throughout the campus. Addressable speakers are installed inside and outside of campus buildings.
- **YSU Homepage/Campus Marquees:** The YSU homepage lists a multitude of information about the campus. The YSU Homepage will also list and detail any emergency information.
- **Social Media:** Regular updates will be posted to the YSU Facebook page ([www.facebook.com/youngstownstate](http://www.facebook.com/youngstownstate)), and Twitter ([twitter.com/youngstownstate](http://twitter.com/youngstownstate)).
- **WYSU-FM:** WYSU is the official radio source regarding information about university operations. In addition, WYSU can provide information on its website ([www.wysu.org](http://www.wysu.org)).
- **Local News Outlets:** The University has a detailed call list that would be activated in the event of an emergency.

**Dealing with News Media and Public Inquires:** In an emergency, to reduce incidents of false reports, rumors and releasing information that could curtail or endanger first responders, individuals are discouraged from addressing the media individually. Refer all questions and inquires to the Public Information Officer.

Contact Ron Cole at (330) 941-3285 for requests from the media or public inquires.

## **Crime Prevention**

It is your responsibility to protect state and personal property from theft. Lock your door when you leave the room or lab, even if for a short time.

- Do not loan your state-issued keys or access cards to anyone.
- Do not leave your access card hanging on a lab coat unattended or leave your keys in pockets.
- Immediately report lost or stolen keys / access cards to YSU Police at (330) 941-3527.
- Keep purses, briefcases, and wallets locked inside your desk, cabinet, or wall locker. Do not bring large sums of money to work.
- Secure your computers. Not only secure your computer physically, but also password protect it.
- Watch for suspicious activity or individuals in your area. If you see someone hanging around or acting strangely, call YSU Police; then make contact with those individuals and ask if you can assist them. If you determine your own safety is not at risk, stall them as long as you can until University police arrive. If they leave, let University police know what direction they went and get a good physical description of that individual such as height, weight, style and color of hair, description of clothing.

**Most Importantly: If you see something, say something!!** The YSU Police are here to serve the campus community. We rely on the campus community to assist us keeping the campus safe! The YSU Police are available twenty-four hours a day, seven days a week at **(330) 941-3527, or 911 from a campus phone.**

## **Security and Tram Escorts**

The YSU Student Security Service safely escorts students and employees from one campus location to another, or to the near North Side. This is a free service provided by the YSU Police Department. The Student Security Services Aides are linked by radio to the YSU Police Department Communications Center and make regular reports during their rounds. Members of the campus community with disabilities, athletes with sport injuries, or anyone who just wants accompanied to their car are encouraged to make special arrangements to be safely escorted to any campus location day or night. Our Student Security Service Aides can assist with wheelchairs and a specially designed tram to transport students, staff, and faculty with a temporary or permanent disability. If you would like to set up a continuous pick-up for the semester, please contact the SSSA Office. You will be asked to complete a request form for the semester. For a one-time accompaniment, please call anytime during the hours listed.

Call (330) 941-1515 for more information.

During fall and spring semesters: Escorts are available Monday-Friday 7:00 A.M. - 11:00 P.M.

During summer and breaks: Availability will vary. Call (330) 941-1515 for information.

## **Lock-down and Shelter in Place**

### **Lock Down**

A lock-down will be used to protect building occupants in the case of an emergency. This requires the residents of a building to stay safely sheltered where they are located once an emergency is identified by the YSU Police, unless there is a specific threat within the building that requires them to exit.

A lock-down will be communicated to the campus via Penguin Alert and the Simplex Mass Communication System.

During a lock-down police and other emergency personnel would be responding to the emergency somewhere on campus. This does not necessarily mean that there is immediate danger in the building a person is located, however precautions should be taken immediately.

What is a lock-down?

All campus buildings will be locked to prevent entrance from the outside. Exit from the buildings will still be possible by pushing the crash bars. Students and personnel should not exit the building unless the situation in the building requires escape.

Exterior entrances of buildings will be locked by the facilities personnel, staff, or faculty who have access to door lock hardware. Faculty or staff members with keys to offices may have the capability to lock entrances to buildings. The YSU Police will not be available to assist in the locking of the buildings if an emergency exists on campus.

Students in residence halls must remain in their rooms with the door locked.

Staff will remain in their offices, or secure area, preferably without windows, with the door locked.

Faculty will move students to any lockable room in the building or remain in the classroom with the door barricaded if possible.

In the event that a room cannot be locked, the room should be barricaded with any accessible items.

The termination of any lock-down will be by the authority of the YSU Police, once an emergency is over. This will also be communicated via Penguin Alert and the Simplex Mass Communication System.

## **Shelter in Place**

In certain emergencies, the campus community may be advised to shelter-in-place to avoid or minimize exposure to outside risks. Risks could include chemical, biological or radioactive releases; some weather-related emergencies or criminal activities.

Once shelter-in-place instructions have been communicated, students, faculty and staff should either stay in the building they are in when they get the message or if outside, go to the nearest building and await further instructions.

### **What Shelter-in-Place Means:**

Shelter-in-Place is a precaution aimed to keep you safe while remaining indoors. It refers to taking refuge in a designated area of safety within a building such as a small, interior room with no or few windows. It does not mean sealing off your entire residence or office building. If you are told to shelter-in-place, follow the instructions provided below.

### **Why You Might Need to Shelter-in-Place:**

The air outside may become dangerously contaminated either intentionally or accidentally; severe weather such as a thunderstorm or a tornado is occurring; or there is an active shooter, making it unsafe to be exposed to outside conditions. Should this occur, YSU Police will provide information using the Penguin Alert and the Simplex Mass Communication System. This system includes emergency warning sirens, programmed messages, live voice instructions, text messaging, and email communication to provide emergency notification and/or instructions. The important thing is for you to follow instructions of University authorities and know what to do if they advise you to shelter-in-place.

### **General Shelter in Place Information:**

If a shelter in place order is given, you should:

- Stop classes or work, or close business operations.
- Share the notification with others in the building if possible, but do not leave the area where you were instructed to shelter-in-place.
- Close all windows, exterior doors, and any other openings to the outside.
- Select interior room(s) above the ground floor with the fewest windows or vents.
- Keep listening to local radio, television, and check your cell phone for Penguin Alert messages until you are told it is safe or you are told to evacuate. University and local officials may call for an evacuation in specific areas only.

# **Building and Campus Evacuations**

## **Building Evacuation**

The purpose of evacuating a building is to remove persons from dangerous and life-threatening conditions presented by a fire, an explosion, a suspected explosive device, a hazardous material release, air contamination or other similar emergency. Usually, such conditions and the need to evacuate are readily apparent and occupants are expected to leave the building immediately. Activating the building fire alarm is the most expedient and safest method to facilitate the evacuation (whether or not the emergency involves fire).

In some situations, such as bomb threats, the presence of life-threatening conditions may be unknown or non-existent. In these cases, the responsibility for assessing available information and the decision of whether or not to evacuate rests with the police. When time and circumstances permit, this decision will be made after consultation with other university officials present.

At the sound of a fire alarm, or other notification to evacuate, all persons are required to leave the building immediately by law. Unless conditions prevent it, the best evacuation route is the nearest stairway leading to the nearest exit. Elevators should not be used as they become inoperable during a loss of electrical power and can increase the risk of smoke inhalation during a fire. Firefighters routinely check stairways for persons needing assistance.

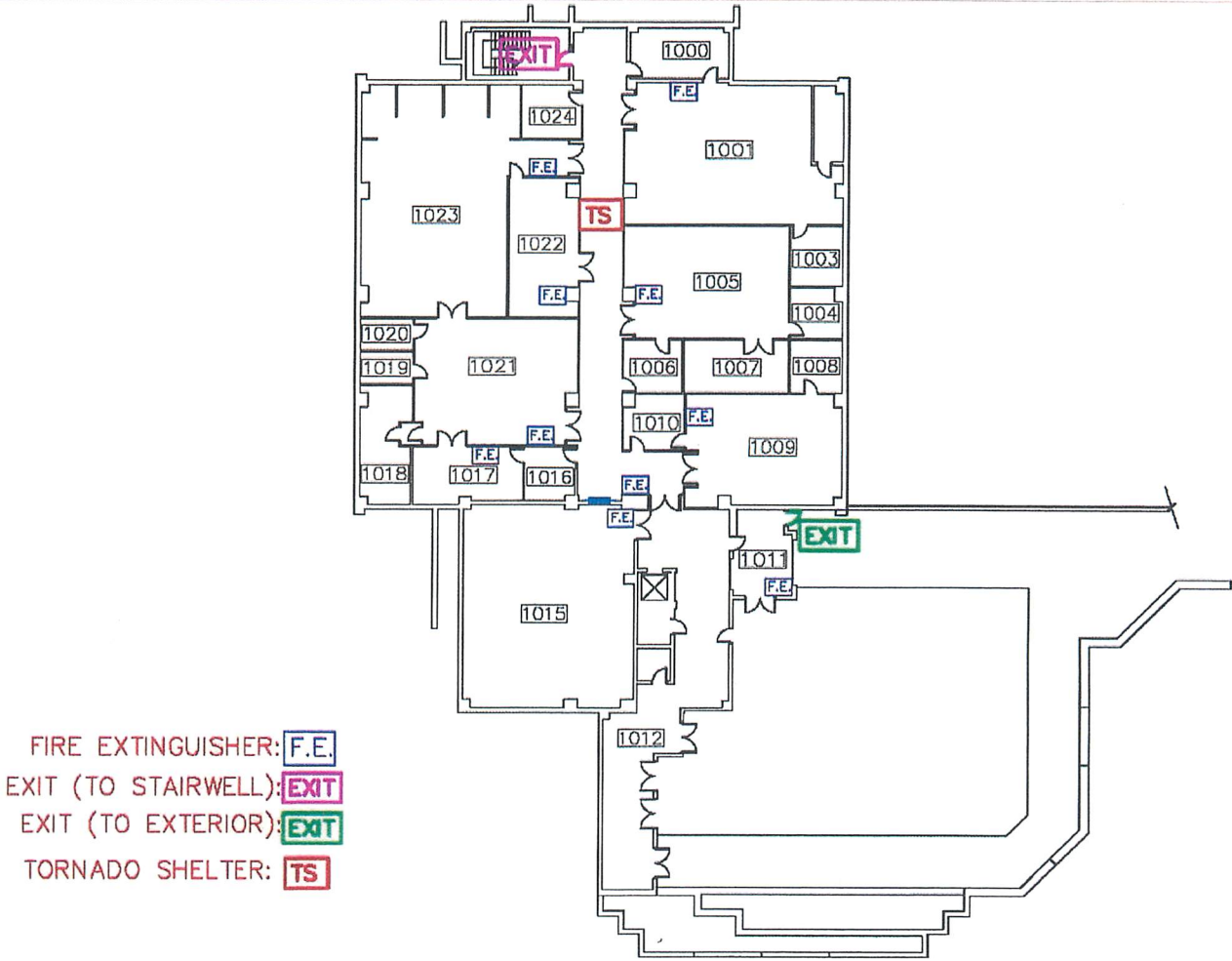
Actions will be taken to ensure persons remain at least two hundred feet from the building to be clear of any danger and to avoid impeding the movement of emergency responders and equipment. This distance may be increased by police or firefighters according to the circumstances of the emergency. Persons should not return to the building unless specific approval to do so has been given by police or firefighters.

Persons with disabilities are responsible for requesting assistance. In a classroom, the instructor should coordinate, and/or assist, disabled persons in the classroom to evacuate. If this is not possible, the instructor should help the persons move to the nearest enclosed stairway and remain there with them while another person advises emergency responders of their location.

Professors and Instructors should preplan for evacuations at the beginning of the semester and identify those who may need assistance in an evacuation.

# Building Evacuation Maps

## Ward Beecher 1<sup>st</sup> Floor

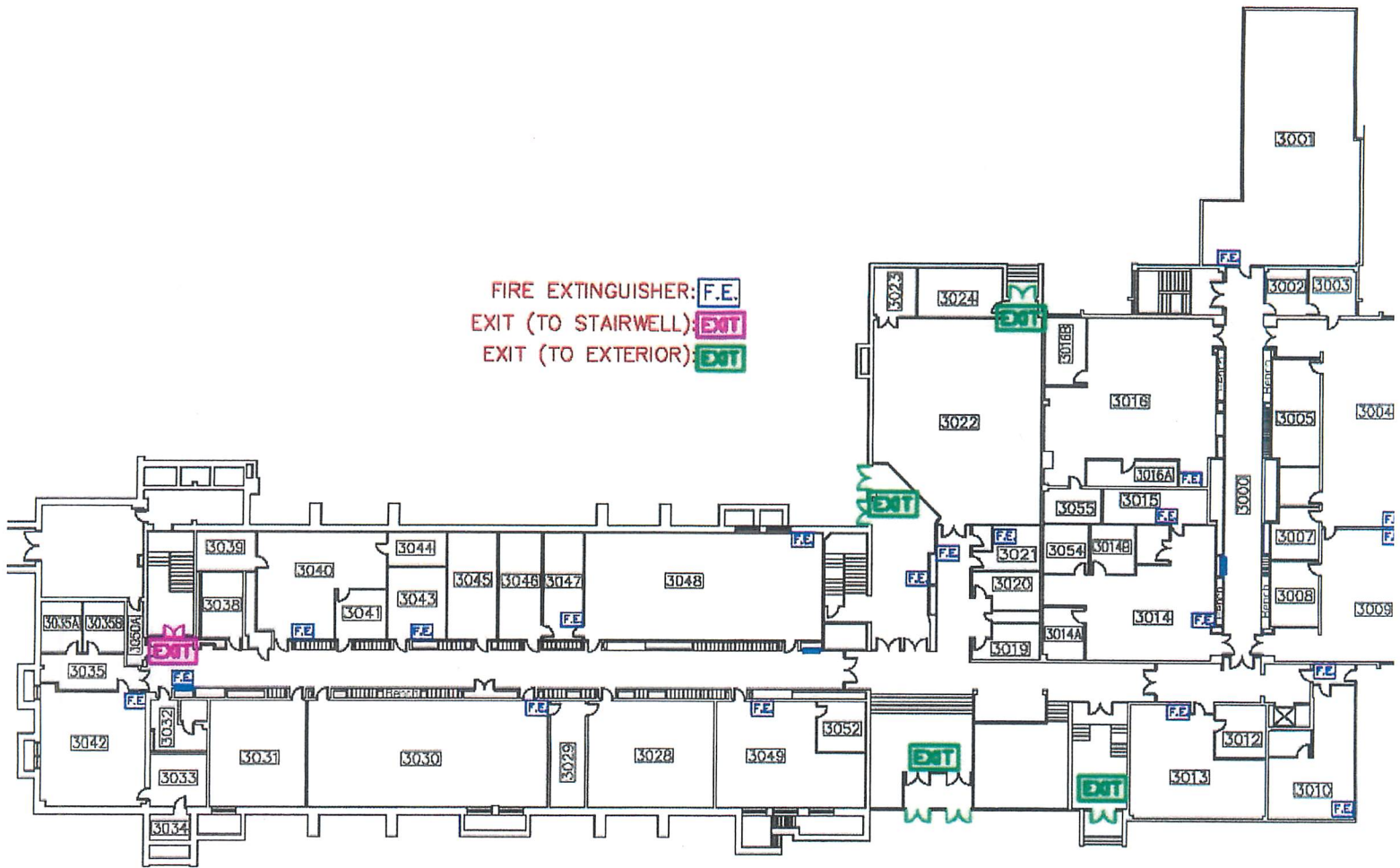


# Ward Beecher 2<sup>nd</sup> Floor

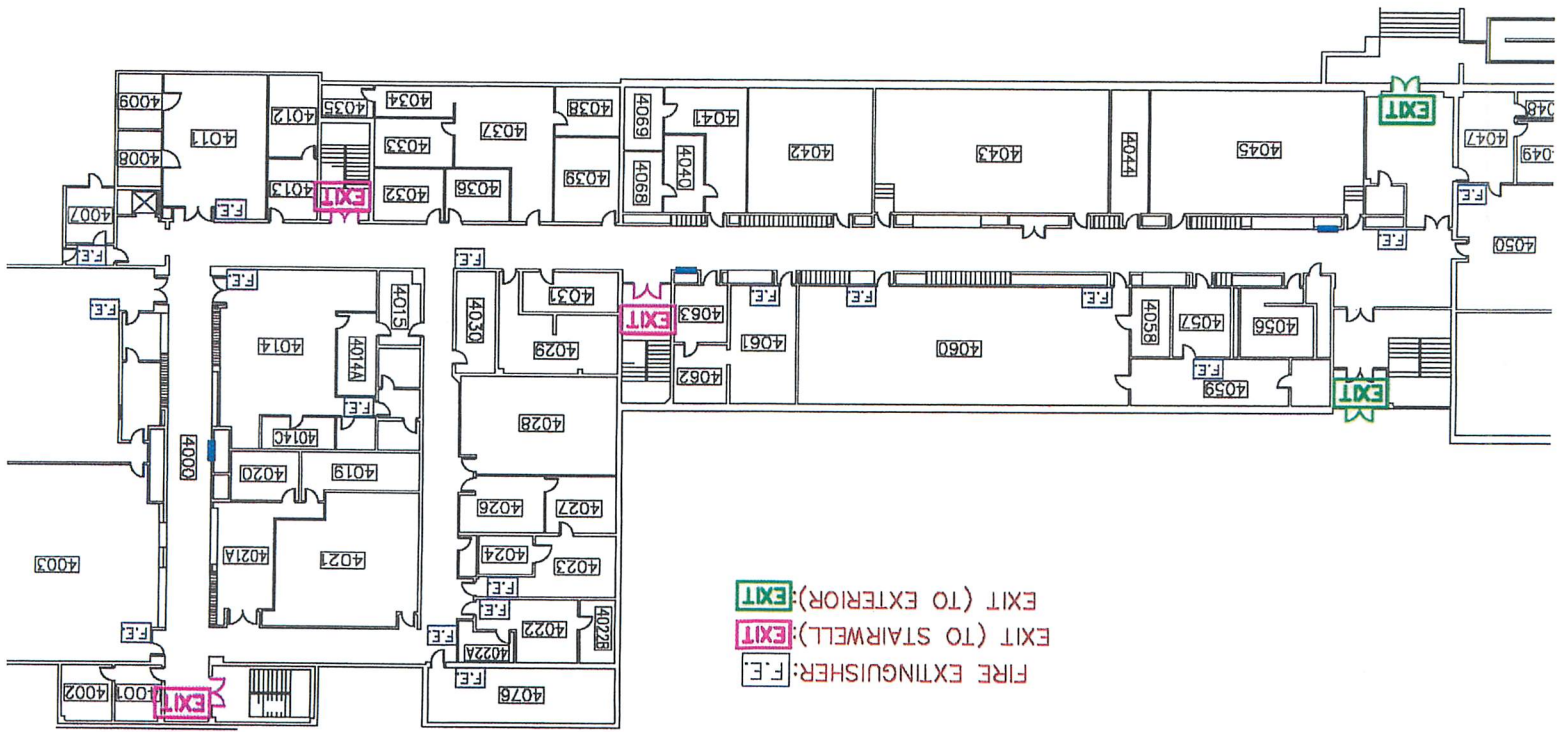
FIRE EXTINGUISHER: F.E.  
 EXIT (TO STAIRWELL): EXIT  
 EXIT (TO EXTERIOR): EXIT



# Ward Beecher 3<sup>rd</sup> Floor

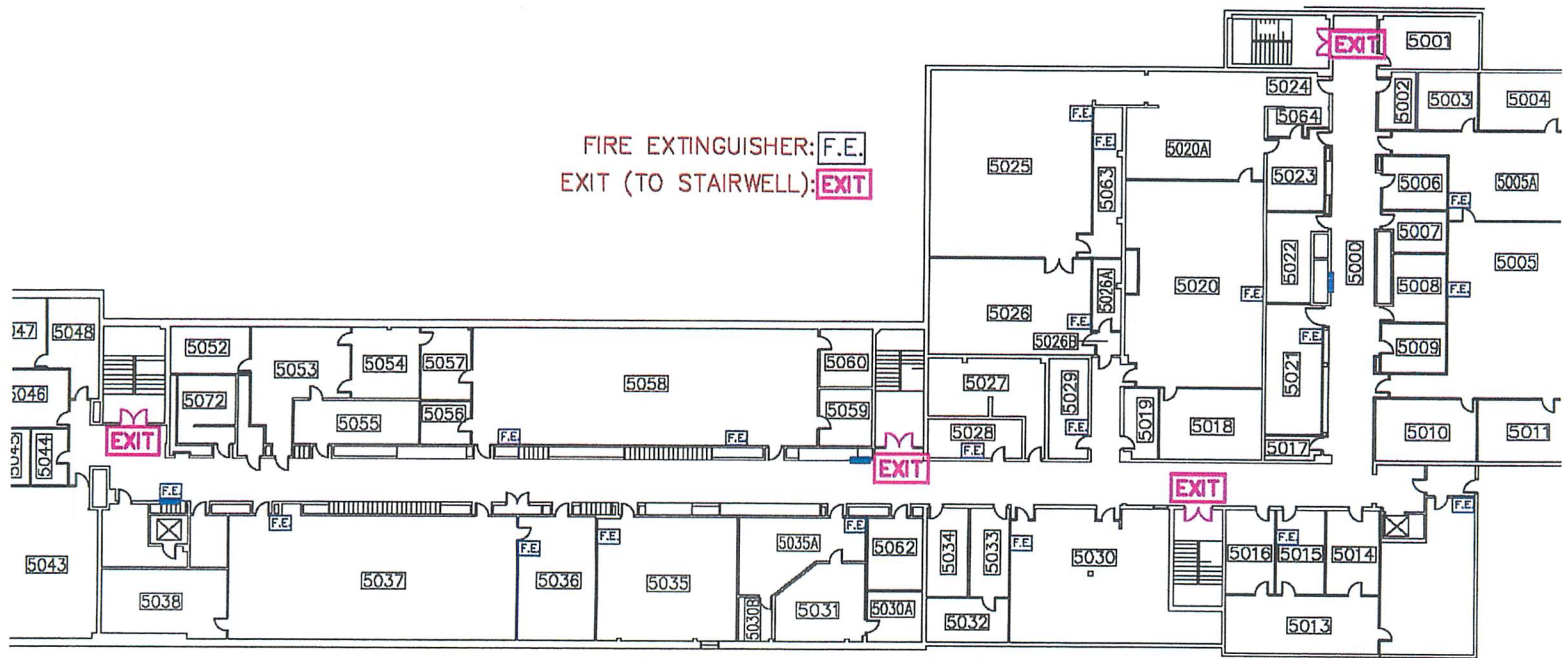




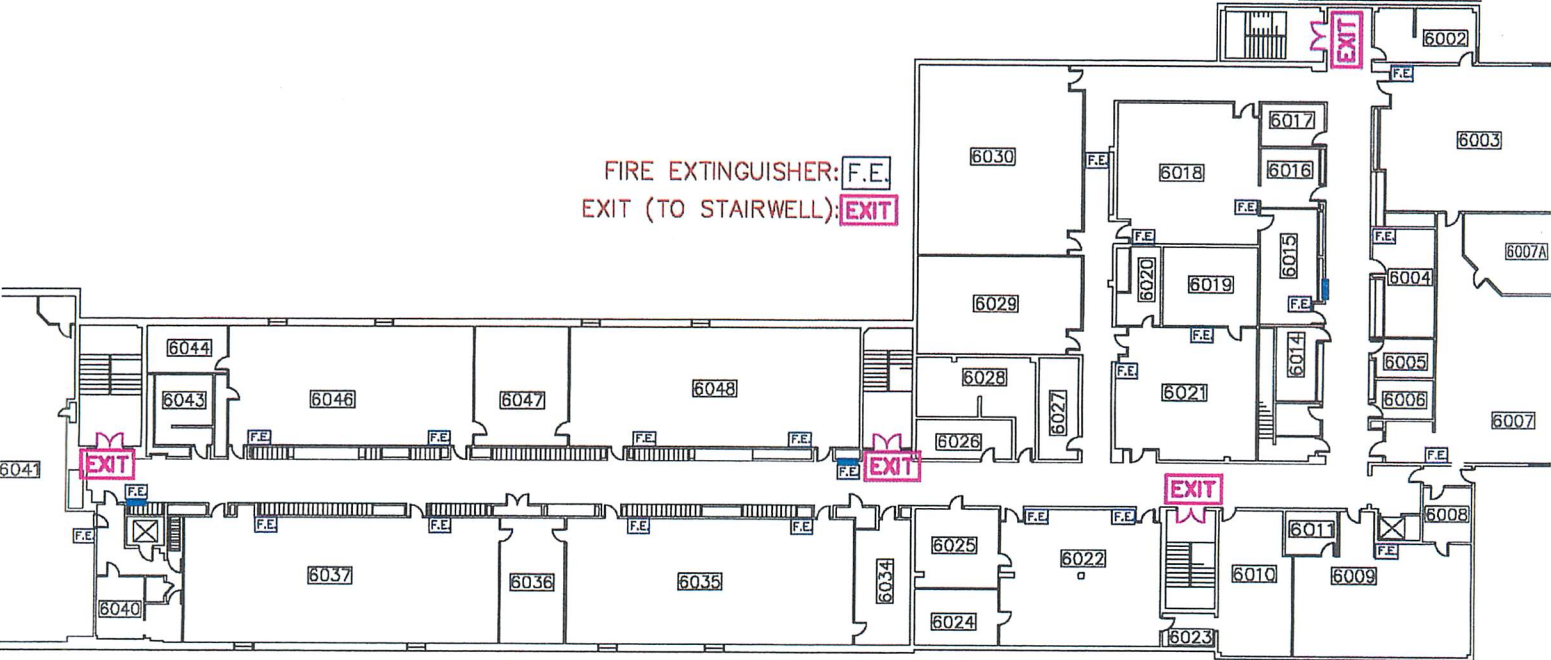


Ward Beecher 4th Floor

# Ward Beecher 5<sup>th</sup> Floor

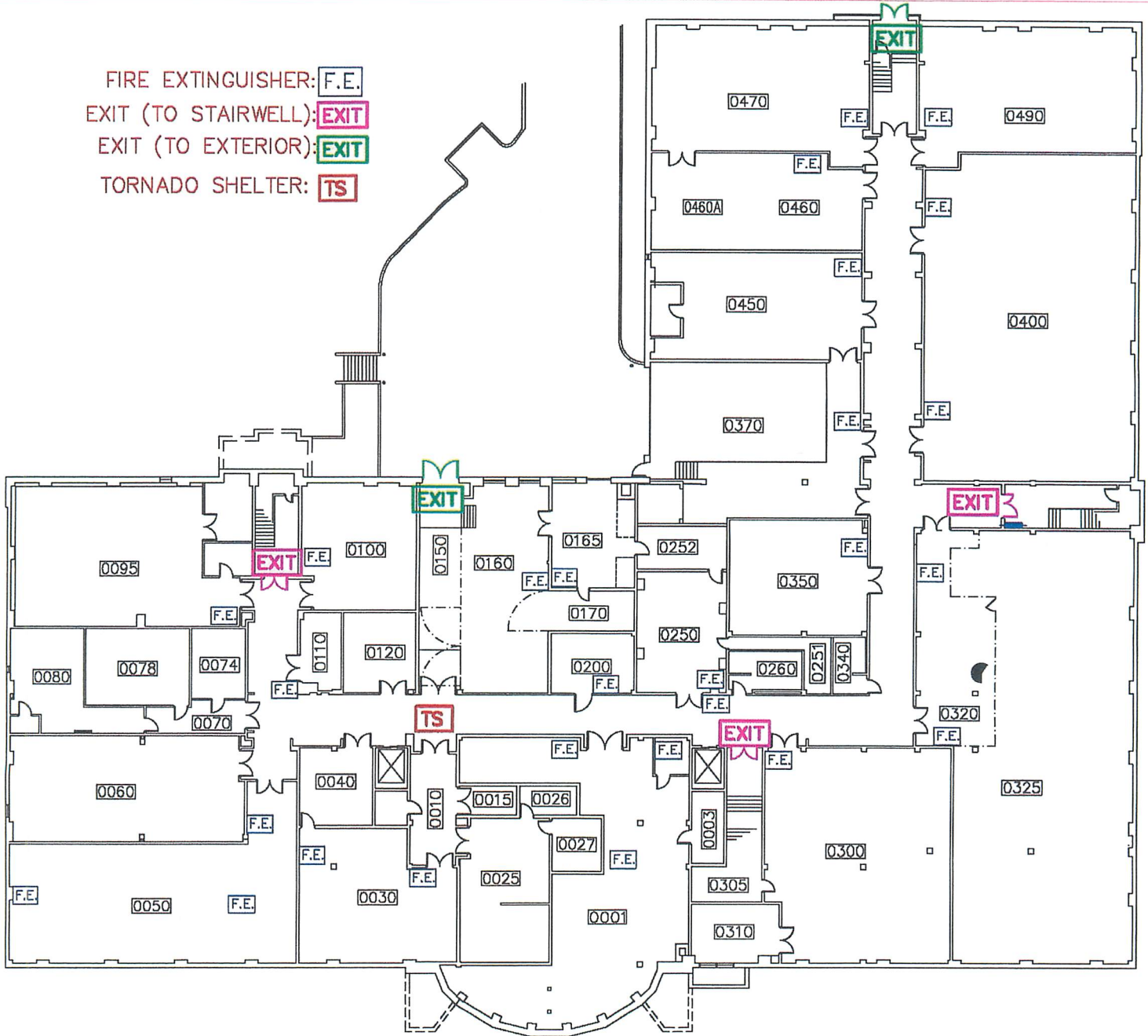


# Ward Beecher 6<sup>th</sup> Floor



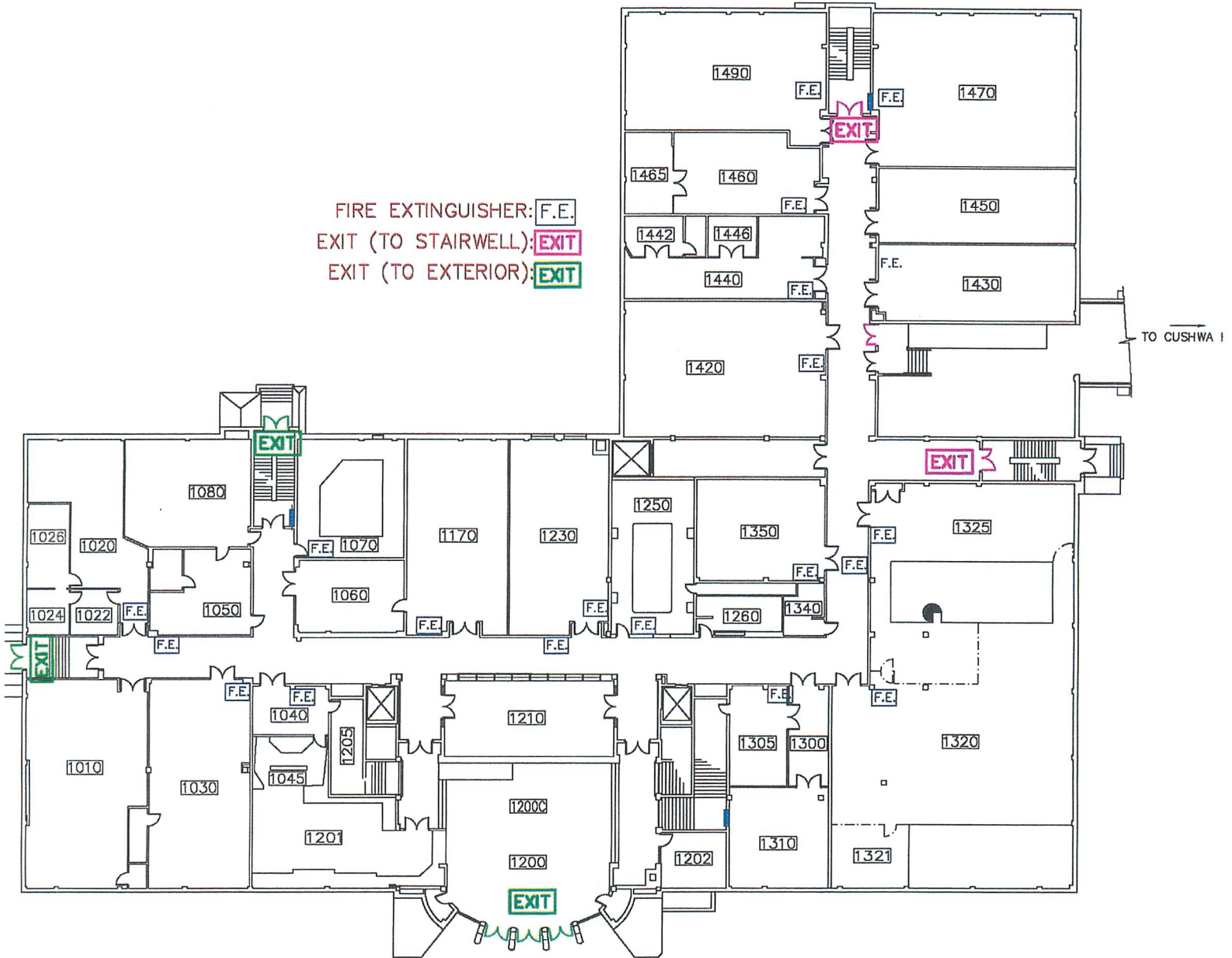
# Moser Hall Basement

FIRE EXTINGUISHER: **F.E.**  
 EXIT (TO STAIRWELL): **EXIT**  
 EXIT (TO EXTERIOR): **EXIT**  
 TORNADO SHELTER: **TS**

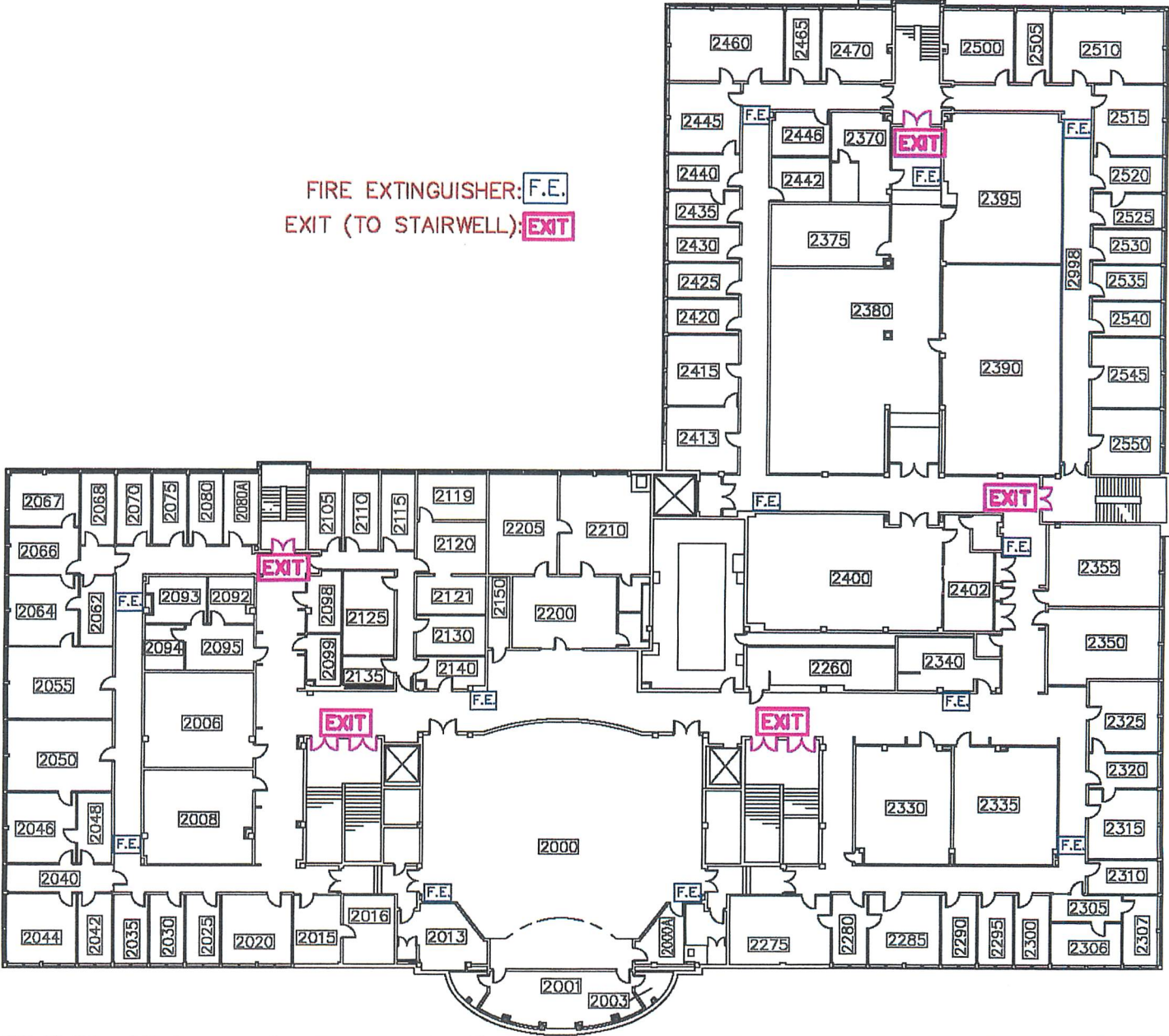


# Moser Hall 1<sup>st</sup> Floor

FIRE EXTINGUISHER: F.E.  
EXIT (TO STAIRWELL): EXIT  
EXIT (TO EXTERIOR): EXIT

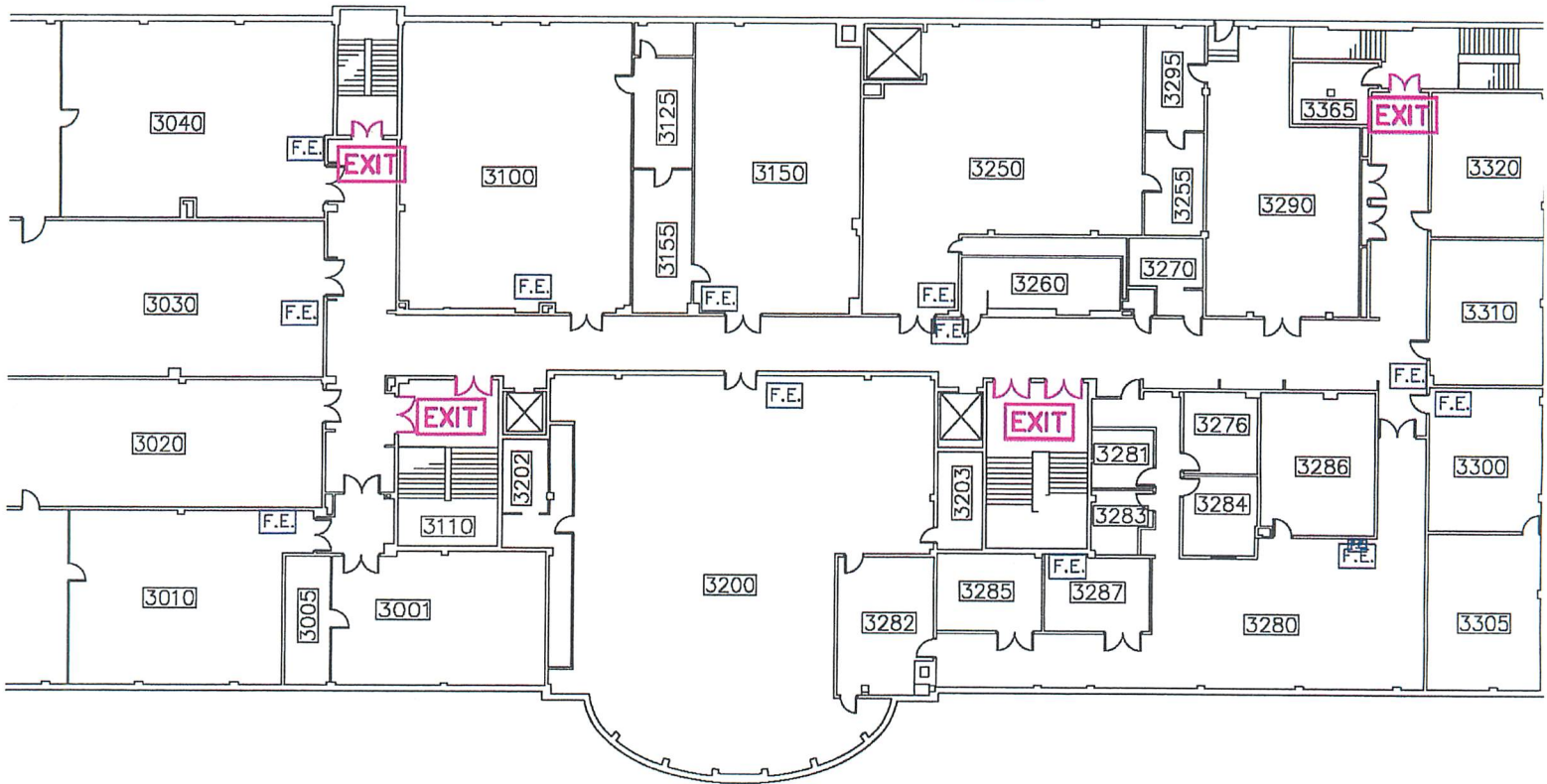


# Moser Hall 2<sup>nd</sup> Floor

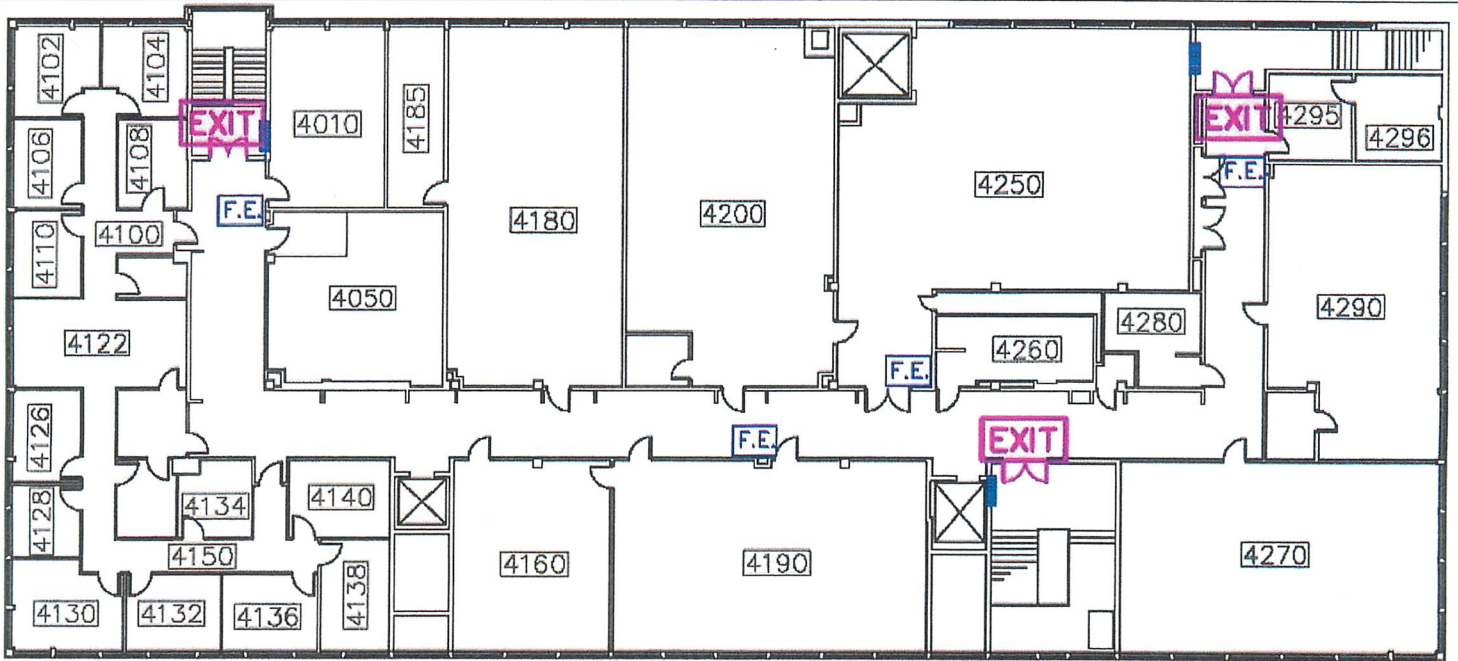


# Moser Hall 3<sup>rd</sup> Floor

FIRE EXTINGUISHER: F.E.  
EXIT (TO STAIRWELL): EXIT



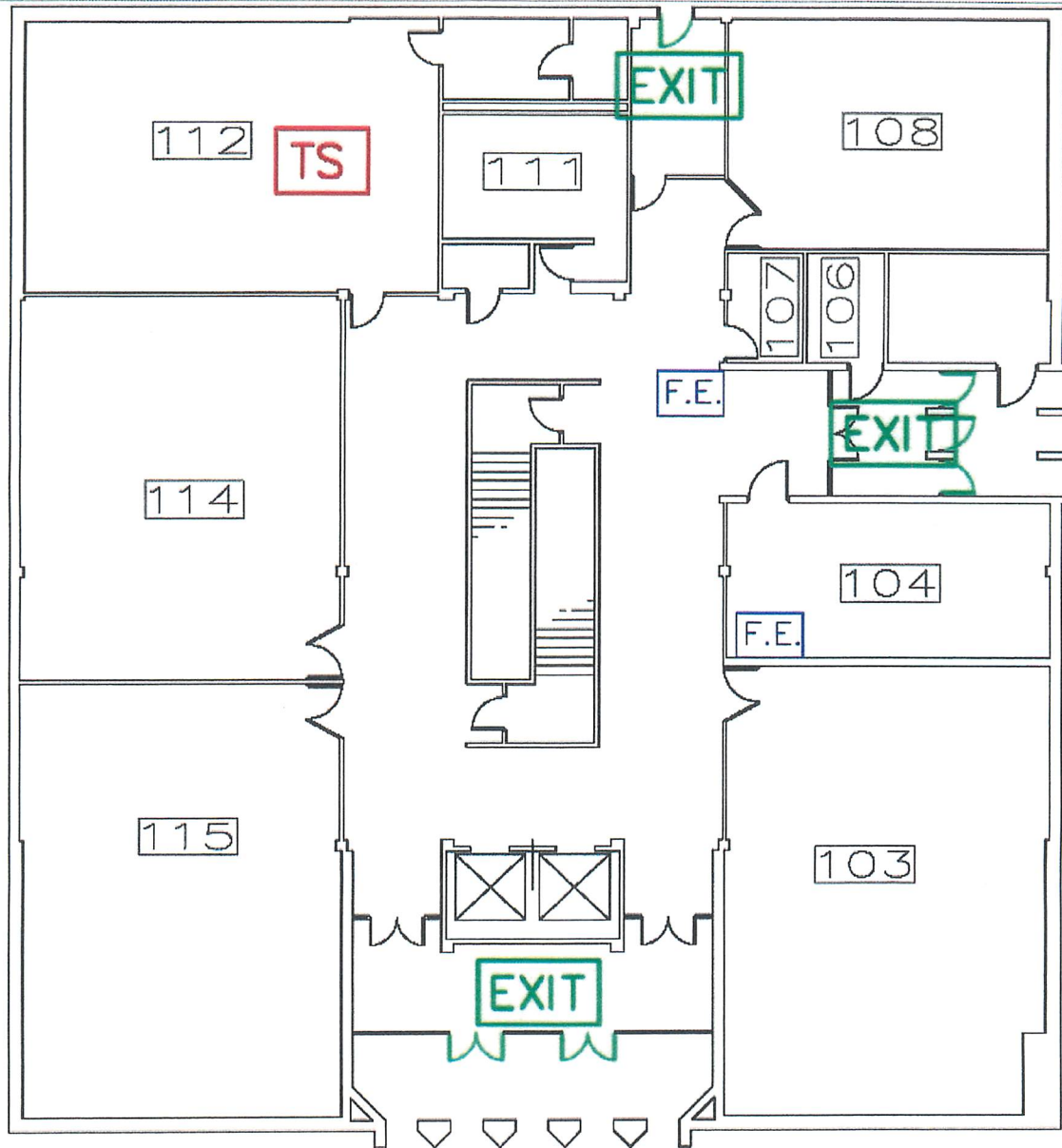
# Moser Hall 4<sup>th</sup> Floor



FIRE EXTINGUISHER: **F.E.**  
EXIT (TO STAIRWELL): **EXIT**



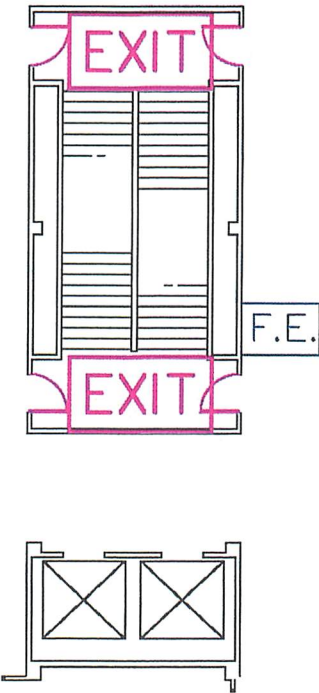
# Lincoln Hall 1<sup>st</sup> Floor



FIRE EXTINGUISHER: **F.E.**  
EXIT (TO EXTERIOR): **EXIT**  
TORNADO SHELTER: **TS**

**Lincoln Hall 2<sup>nd</sup>-6<sup>th</sup>**

THE LINCOLN BUILDING IS IDENTICAL ON FLOORS 2-6. STAIRWELL ACCESS IS IN THE CENTER OF THE BUILDING.

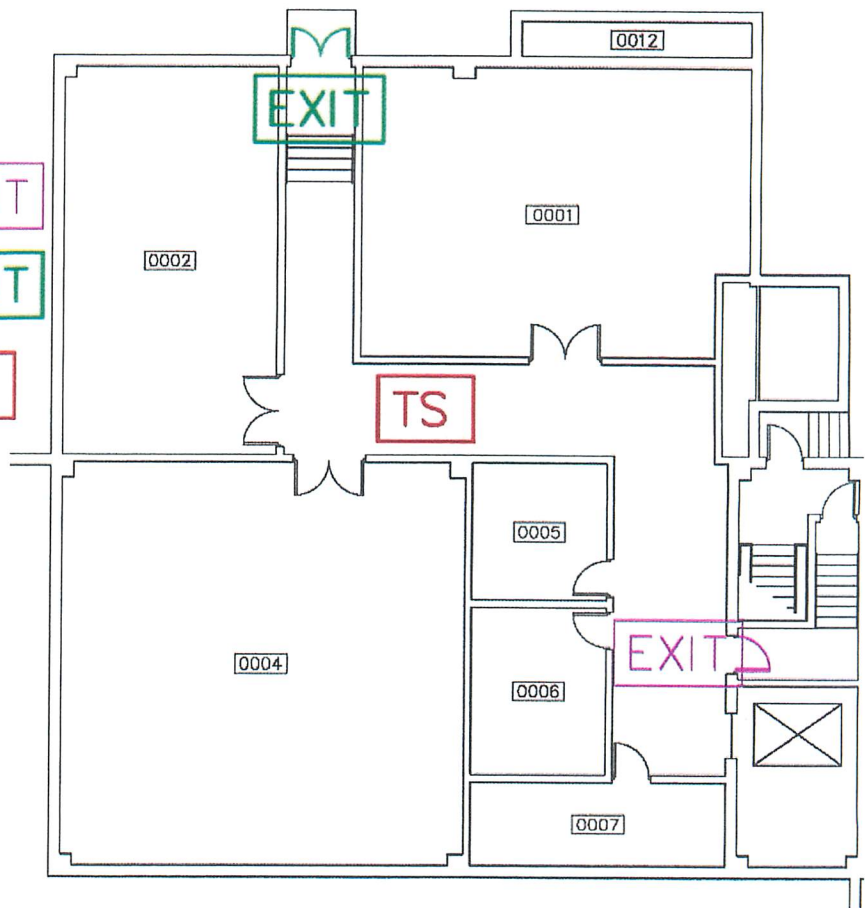


FIRE EXTINGUISHER: **F.E.**

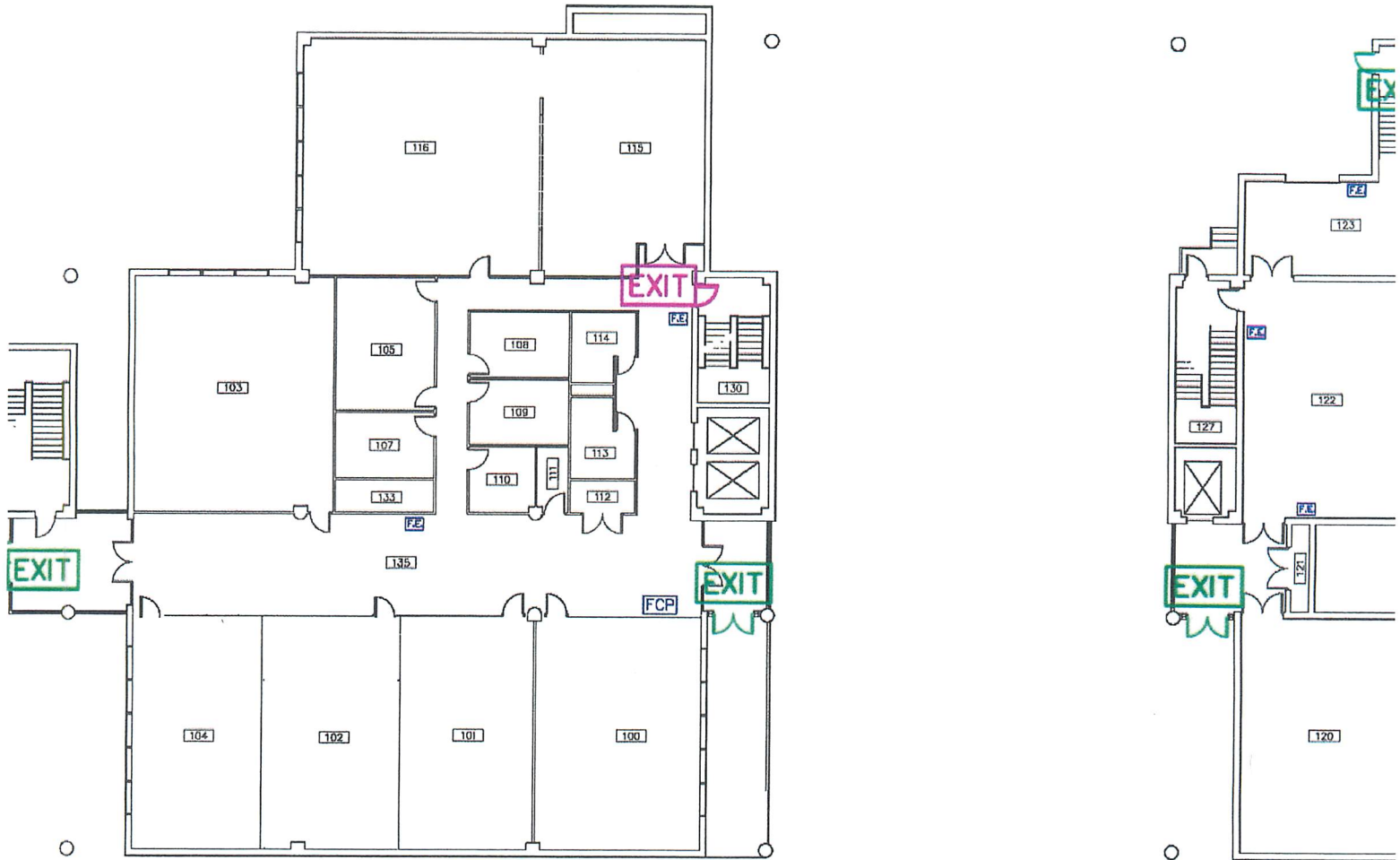
EXIT (TO STAIRWELL): **EXIT**

# Meshel Hall Basement

- FIRE EXTINGUISHER:
- EXIT (TO STAIRWELL): EXIT
- EXIT (TO EXTERIOR): EXIT
- TORNADO SHELTER: TS

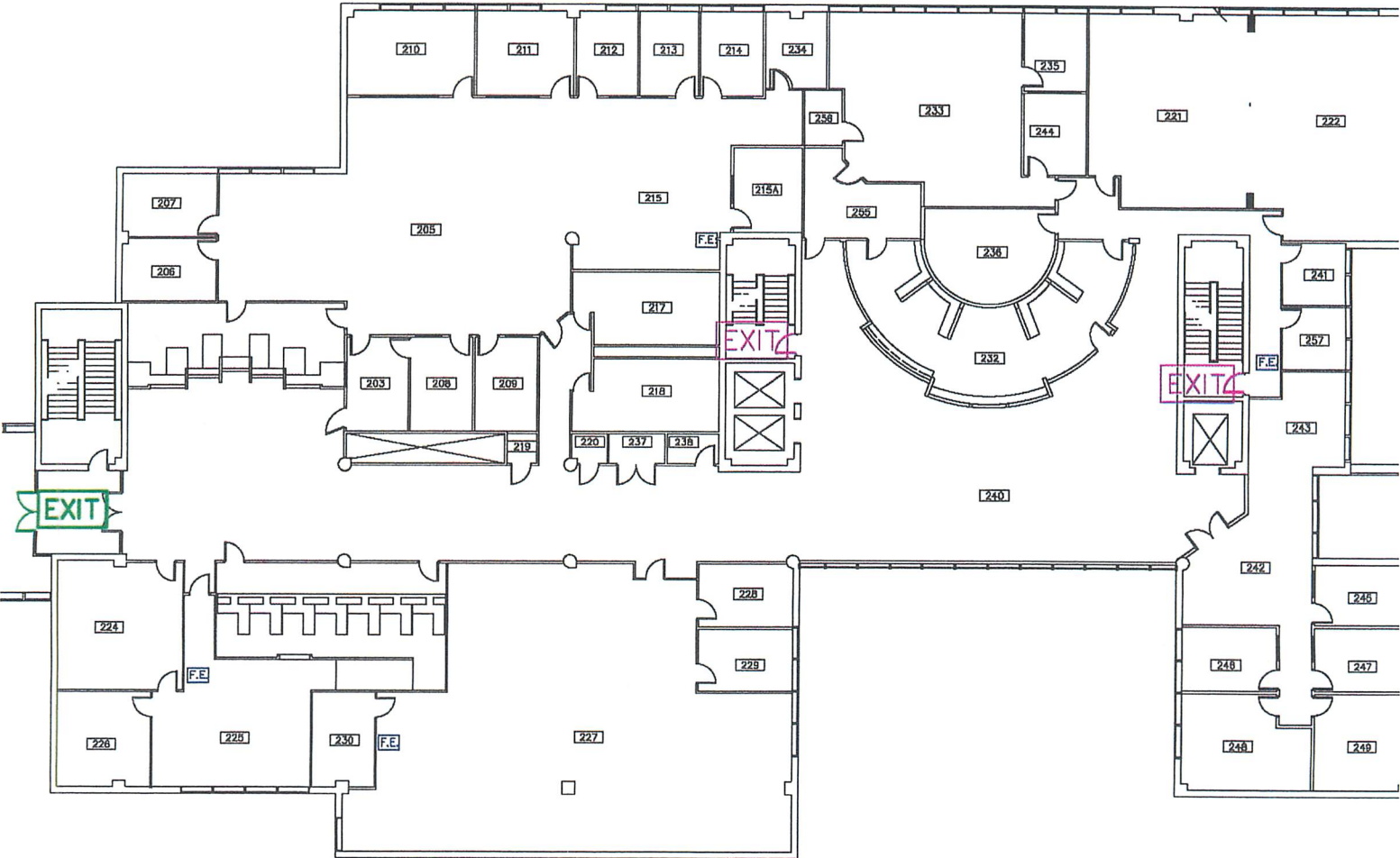


# Meshel Hall 1<sup>st</sup> Floor



FIRE EXTINGUISHER: **F.E.**  
EXIT (TO STAIRWELL): **EXIT**  
EXIT (TO EXTERIOR): **EXIT**

# Meshel Hall 2<sup>nd</sup> Floor



FIRE EXTINGUISHER: F.E.  
EXIT (TO STAIRWELL): EXIT  
EXIT (TO EXTERIOR): EXIT

# Meshel Hall 3<sup>rd</sup> Floor



FIRE EXTINGUISHER: F.E.  
EXIT (TO STAIRWELL): EXIT

## **Campus Evacuation**

An emergency of the magnitude and seriousness requiring the evacuation of the campus will likely and similarly affect surrounding communities. When the emergency is confined to the local community, evacuation to neighboring communities and routes leaving the immediate area are used. When an emergency is regional or larger scale, evacuation routes direct traffic to interstate highways for mass evacuation and relocation. A person evacuated from the campus may have few options regarding the direction of travel and should immediately follow the directions they are given.

Madison Avenue expressway located North of Stambaugh Stadium has been identified as the major traffic artery toward which evacuating traffic will be directed if possible. From there, evacuees can be integrated into the larger regional evacuation plan if necessary. However, the main surface roads around campus, Belmont Ave, Fifth Ave, Wick Ave, and Rayen Ave will also be used to allow for the maximum number of vehicles to evacuate campus in the shortest time possible. Listed below are the primary egress routes to be utilized:

### **Areas West of Fifth Avenue (M-70 Lot, Edge Apartments)**

All parking lots and areas west of Fifth Avenue will evacuate west to Belmont Avenue.

North to Madison Avenue Expressway then west to I680, or;

South to Rayen Avenue then west towards US 422.

### **Areas East of Fifth and West of Elm Street (Lincoln Avenue Deck, M-53 Lot)**

All Lots between Fifth Ave and Elm St. Proceed North on Fifth to West bound Service Road then Madison Ave Expressway to I680, or;

North on Fifth Avenue to Gypsy Lane, then west to 711, or;

Southbound on Fifth Avenue to Mahoning Avenue. Mahoning Avenue to I680.

### **Areas North of the Madison Avenue Expressway (Lyden and Cafaro House, Flats at Wick)**

All parking lots north of the Madison Avenue Expressway should go North on Elm Street to Gypsy Lane. Then west to 711 or east to Logan Avenue and then North on Logan Avenue.

### **Areas East of Elm Street and West of Walnut Street (Wick Avenue Deck, Enclave)**

All parking areas East of Elm Street and West of Walnut Street will proceed northbound on Wick Avenue to Madison Avenue Expressway to either I680 or Himrod Expressway, or;

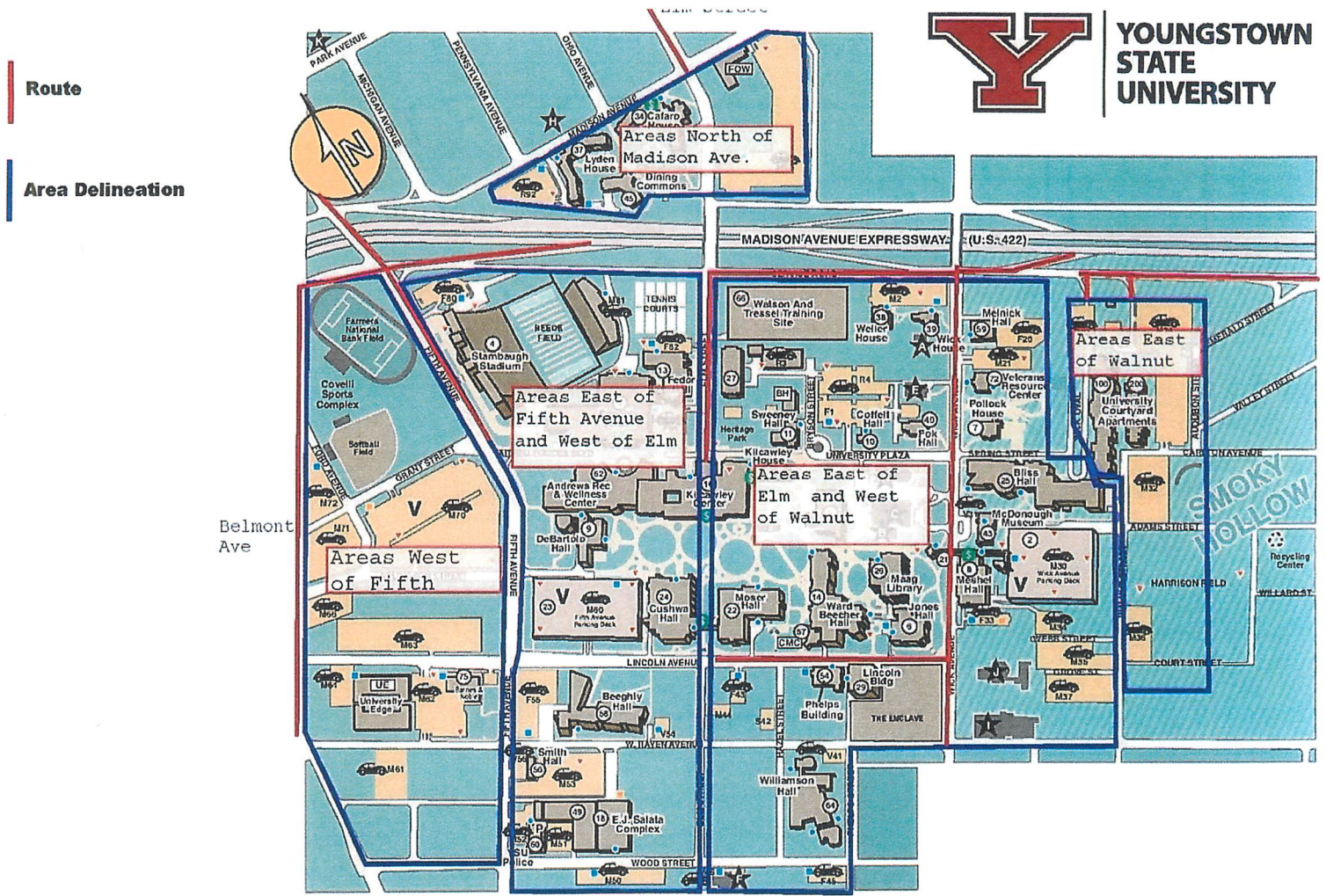
Northbound on Wick Avenue to McGuffey Road, or;

Northbound on Wick to Logan Avenue, or  
 Southbound to Rayen Avenue (US 422) then east.

**Areas East of Walnut Streets (Courtyard Apartments)**

All parking East of Walnut will proceed East to Andrews Avenue then north on Andrews Avenue to Logan Avenue, then North on Logan.

**Campus Evacuation Map**





## **Active Shooter, Assault, and Human Trafficking**

### **Active Shooter:**

Contact the YSU Police at (330) 941-3527 or 911 from a campus phone.

An active shooter is an individual actively engaged in killing or attempting to kill people in a confined and populated area, typically through the use of firearms.

### **Action Steps:**

#### **If an active shooter is in the same building as you or outside your building:**

- Proceed to a room that can be locked or lock/barricade the room you are in.
- Close and lock all windows and doors.
- Turn off the lights.
- If possible, get everyone down on the floor where no one is visible from outside the room.
- Have one person call 911. Advise the dispatcher of your location and what is taking place.
- Remain in place until the police or campus administrator known to you gives the “all clear”.
- Unfamiliar voices may be the shooter attempting to lure victims from their safe space. Do not respond to any voice commands until you can verify the source.

#### **If an active shooter enters your office/area/classroom:**

- Try to remain calm.
- Dial 911, if possible, and alert the police to the shooter’s location. If you can’t speak, leave the line open so the dispatcher can listen to what’s taking place.
- If there is absolutely no opportunity to escape attempting to overpower the shooter with force should be considered last resort, after all other options have been exhausted.
- If the shooter leaves the area, proceed immediately to a safer place and do not touch anything that was near the shooter.

#### **If you decide to flee during an active shooter situation:**

- Do not attempt to carry anything.
- Move quickly, keep your hands visible and follow the instructions of any police officers you may encounter.
- Do not attempt to remove injured people. Notify authorities of their location as soon as possible.

**How to respond when law enforcement arrives:**

- Remain calm and follow instructions.
- Put down any items in your hands (i.e., bags, jackets).
- Raise hands and spread fingers.
- Keep hands visible at all times.
- Avoid quick movements toward officers such as holding on to them for safety.
- Avoid pointing, screaming or yelling.
- Do not stop to ask officers for help or direction when evacuating.

**Information you should provide to law enforcement or the 911 Operator:**

- Location of the active shooter.
- Number of shooters.
- Physical description of shooters.
- Number and type of weapons held by shooters.
- Number of potential victims at the location.

The Fire alarm system should NOT be activated for an active shooter emergency; pulling the fire alarm facilitates evacuation but does not facilitate the proper tactics.

Report any unusual blocked, barricaded or chained doors to the YSU Police Department at once.

**Workplace Violence & Unruly Individuals**

If you witness or experience workplace violence:

- Avoid or discretely remove yourself from the area where the confrontation is occurring.
- Call YSU Police at (330) 941-3527 or 911 from a campus telephone.

Under no circumstances should staff engage persons in a shouting match or become involved in a physical altercation. Defuse or walk away from a potentially violent situation and call the police. Throughout the event, don't lose your cool; remain calm and keep your composure. Don't argue, speak slowly and quietly no matter how loud or confrontational the patron becomes. Don't take anything an angry person says personally, it's never about you.

- If the situation becomes violent call the YSU Police at (330) 941-3527 or 911 from a campus phone.
- Remain Calm: Maintain control of yourself, even if the person's tirade makes you feel like yelling yourself.
- Do not take it personally: Remember, the person is not angry with you; they are inconvenienced or displeased by the situation.
- Use your best listening skills: The first thing an angry person wants to do is vent; they want someone to listen; and, for better or worse, you are that person. • Listening patiently can defuse a situation as long as the person feels acknowledged in his or her complaint; hear them out.

- When they are done talking, summarize what they told you, and ask questions to clarify their complaint.
- Body language is critical; keep eye contact, stand up straight and keep your arms uncrossed. Show how closely you are paying attention to their problem.
- Actively sympathize: After the person vents, they want to know you understand where they are coming from and how they feel. Express sympathy for their unpleasant experience.
- Find a solution: Once you understand the situation, offer a solution if possible. Seek out your supervisor for situations beyond your control.
- Take a few minutes on your own: After the situation has been resolved, it is helpful to take your own “time out”, by taking a short walk, having a snack, or taking a restroom break. Remember, the person’s actions were due to a situational frustration, and nothing you did.

### **Sexual Assault:**

Youngstown State University prohibits all forms of discrimination based on sex including sexual harassment as well as sexual misconduct and sexual violence. The University has numerous resources and education initiatives regarding sexual assault. If a student, visitor, or fellow faculty/staff member reports they were a victim of a sexual assault; the following resources are here to help.

YSU Police: (330) 941-3527  
 Title IX Coordinator: (330) 941-4629  
 Student Outreach and Support: (330) 941-4721  
 RAINN: 1 (800) 656-HOPE

### **Human Trafficking:**

Human trafficking is a form of modern slavery—a multi-billion-dollar criminal industry that denies freedom to 24.9 million people around the world. Moreover, no matter where you live, chances are it's happening nearby. From the girl forced into prostitution at a truck stop, to the man discovered in a restaurant kitchen, stripped of his passport and held against his will. All trafficking victims share one essential experience: the loss of freedom.

Victims of human trafficking are frequently lured by false promises of a lucrative job, stability, education, or a loving relationship. Victims can be men or women, adults or children, foreign nationals or U.S. citizens. While they share the trait of vulnerability, victims have diverse ethnic and socio-economic backgrounds, varied levels of education, and may be documented or undocumented.

As defined under U.S. law, victims of human trafficking can be divided into three populations:

- Children under age 18 induced into commercial sex.
- Adults aged 18 or over induced into commercial sex through force, fraud, or coercion.

- Children and adults induced to perform labor or services through force, fraud, or coercion.

Traffickers lure and ensnare people into forced labor and sex trafficking by manipulating and exploiting their vulnerabilities. Human traffickers recruit, transport, harbor, obtain, and exploit victims – often-using force, threats, lies, or other psychological coercion. Traffickers promise a high-paying job, a loving relationship, or new and exciting opportunities. In other cases, they may kidnap victims or use physical violence or substance abuse to control them.

Traffickers employ a variety of control tactics, including physical and emotional abuse, sexual assault, confiscation of identification and money, isolation from friends and family, and even renaming victims. Often, traffickers identify and leverage their victims' vulnerabilities in order to create dependency. They make promises aimed at addressing the needs of their target in order to impose control. As a result, victims become trapped and fear leaving for myriad reasons, including psychological trauma, shame, emotional attachment, or physical threats to themselves or their children's safety.

If you believe a student, visitor, or fellow faculty/staff member is a victim of human trafficking contact the YSU Police.

For assistance call:

YSU Police: (330) 941-3527

National Human Trafficking Hotline: 1 (888) 373-7888

## **Terroristic and Civil Related Incidents**

### **Terrorism:**

Terrorism is defined as “premeditated, politically motivated violence perpetrated against noncombatant targets by subnational groups or clandestine agents.” Examples include (but not limited to): chemical, biological, nuclear, radiological and conventional weapon (explosives, small arms, etc.) attacks, vehicle-borne and improvised explosive devices, hostage situations and suicide attacks. In the event of a terrorist threat, the YSU Police will coordinate with Ohio Homeland Security.

**“If you see something, say something!”**

To report acts of terrorism call:

YSU Police: (330) 941-3527 or 911 from a campus phone  
OHS Terrorism Analysis Tip Line: 1 (877) 647-4683  
Statewide Terrorism Analysis Center: 1 (844) 557-8222  
NE Ohio Regional Fusion Center: 1 (216) 515-8477  
Greater Cincinnati Fusion Center: 1 (513) 263-8000

### **Hostage Situations:**

A hostage situation involves one or more persons being held against their will by one or more individuals. If weapons are present, this should be viewed as an active shooter situation. Hostage situations may develop out of active shooter incidents.

In the event of a hostage situation:

- **Contact the YSU Police at (330) 941-3527 or 911 from a campus phone immediately.**
- Cooperate with the hostage taker.
- De-escalate the situation, if possible.
- Stall for time, if possible.
- Provide the YSU Police with the last known location, description of clothing, physical features and if the individual is known.

### **Civil Disturbance:**

Civil disturbance is a general term used to describe a variety of violent situations. It does not include nonviolent demonstrations protected by the first amendment. The Youngstown State University campus is a public venue, where nonviolent demonstrations are protected. If a situation arises where crowd control is necessary, the YSU Police will handle this task. If outside assistance is needed the YSU Police will request help from the Youngstown Police Department, Mahoning County Sheriff, or State Highway Patrol. Staff and students should not inject themselves in a protest that becomes violent. **Instead, call the YSU Police at (330) 941-3527 or 911 from a campus phone.**

## **Bomb Threats:**

### **If you receive a bomb threat by telephone:**

- Remain calm. Keep the caller on the line as long as possible so that the call may be traced.
- DO NOT transfer the call or interrupt the caller.
- If your phone has a display, copy the information in the display.
- Call or have someone nearby call **YSU Police at (330) 941-3527 or 911 from a campus phone.**

### **Ask the caller:**

- Where is the bomb located?
- When will it go off?
- What does it look like?
- What kind of bomb is it?
- What will make it explode?
- Did you place the bomb?
- Why?
- What is your name?

Write down the exact wording of the bomb threat.

### **Note the callers voice, was it:**

- Angry, calm, laughing, etc.

### **Was the caller:**

- Coughing, crying, excited, etc.

## **Suspicious Package or Mail:**

### **For suspicious packages and letters:**

If you are unable to verify mail contents with the addressee or sender:

- Do not open it.
- Treat it as suspect.
- Isolate it; don't handle it.
- Ensure that all persons who have touched it wash their hands with soap and water.
- Notify your supervisor immediately.
- **Call YSU Police at (330) 941-3527 or 911 from campus phone.**

### **What should you do if you receive a suspicious substance by mail?**

- Isolate the damaged or suspicious mail piece or package. Restrict the immediate area.
- Ensure that all persons who have touched the mail piece wash their hands with soap and water.
- **Call YSU Police at (330) 941-3527 or 911 from campus phone.**

## Mental Health Related Incidents

### Suicidal Persons:

- ❖ **In an emergency call the YSU Police at (330) 941-3527 or 911 from a campus phone.**
- Contact Counseling Services at (330) 941-3737
- A Person of concern form is available at [Student Outreach and Support](#). The form can also be found at the Student Outreach and Support website.

Any member of the University community, who learns that a student is exhibiting warning signs of suicide but has not engaged in suicidal behavior or communicated a suicide threat, should contact Student Counseling Services (330) 941-3737, for consultation and support, especially if the student is exhibiting suicidal ideation.

A Student of Concern Report should also be made through the Student Outreach and Support Office or online via their website: <https://ysu.edu/student-experience/student-outreach-support>. For immediate assistance with a student if Student Counseling Services is closed, contact YSU Police at (330) 941-3527 or 911 from a campus telephone.

Any member of the college community who learns that a student has communicated a suicide threat/ideation/plan should make a Student of Concern Report through the Student Outreach and Support Office or online at [Student Outreach and Support](#).

If at any point it seems reasonable to assume that suicidal behavior is imminent, especially if the student is uncooperative with attempts to help, call **YSU Police at 330-941-3527 or 911 from a campus phone**. Share the student's name, description, details of the suicide threat, and location/destination (if known). Police officers can check on the student and transport them, as appropriate, to be evaluated for suicidal risk.

Any member of the university community who learns that a student has just engaged in, is in the processing of engaging in, or is about to engage in suicidal behavior (i.e. a suicide attempt), should immediately report this behavior to emergency personnel by calling YSU Police at (330) 941-3527 or 911 from a campus telephone.

If possible, provide responding emergency personnel with any pertinent information that is known about the student. A Student of Concern Report should also be made through the Student Outreach and Support Office or online at <https://ysu.edu/student-experience/student-outreach-support>.

### **Mental Health/Counseling Services:**

Faculty, staff, and other concerned persons often call student Counseling Services when faced with students displaying a range of behaviors that may be a cause for concern, including:

- Worry, anxiety, expressions of sadness/hopelessness, or poor hygiene.
- A pattern of withdrawal from participation or excessive absences.
- Irritability and conflict with others.
- Confused patterns of thinking or communicating.
- Oral or written expressions of distress, self-harm and/or suicidal/homicidal ideation.

Our therapists are happy to speak with you on the phone about your concerns and how to make the most appropriate referral for the student. We work closely with many departments on campus including Student Outreach and Support, Center for Student Progress and the Student Health Clinic and may refer to these or others groups/organizations on and off campus to best help a student.

For counseling and outreach support call:

Counseling Services: (330) 941-3737

Student Outreach: (330) 941-4721

### **Student Outreach and Support:**

The Director of Student Outreach can assist students by offering advices on how to handle a particular situation, or by providing information on or arranging campus and community resources when necessary.



## **Medical Related Incidents**

### **General Medical Emergencies:**

#### **If someone is ill or injured and requires assistance:**

- **Call YSU Police at (330) 941-3527 or by dialing 911** from a campus phone. If an ambulance is needed, tell the dispatcher at the beginning of your conversation.
- Give the dispatcher the following information:
  - The **location** of the person, include the building and the room number.
  - The **illness or injury** of the person.
  - Whether the person is conscious.
  - Any other information that is known, such as existing health conditions.
- Designate an individual to meet responders and show them where the victim is in the building.

Remember, it is important to stay on the line until the dispatcher gathers the pertinent information about the victim's location, consciousness, breathing, etc. Those trained to perform CPR and first aid can act within their expertise while those who are not trained should remain calm and stay with the victim. Crowding is generally not helpful, and can hinder emergency services performing their duties.

### **Blood-Borne Pathogens:**

Blood borne pathogens are present in human blood and can cause disease in humans. Some examples are, hepatitis B, and HIV. Always assume blood is infected with a dangerous disease and cleanse thoroughly if you are exposed to any bodily fluids.

If you encounter blood or bodily fluids, contact the Environmental and Occupational Health and Safety department at (330) 941-3700.

Unless you have the proper protection available (gloves, eye protection, mask, etc.) you should not attempt to clean up blood or bodily fluids. Instead, you can keep bystanders from entering the area.

### **Medical Pandemic:**

A pandemic is an outbreak of disease that can spread from person to person. When people do not have natural immunity to a virus, serious illness or death is more likely to occur in any age group. This may be a local, regional, or global outbreak.

Reduce the spread of disease by:

- Maintaining personal hygiene and protection.
- Wash hands frequently.
- Limit international travel.
- Pharmaceutical intervention.

Any type of medical incident that would affect the campus community will be relayed using the Penguin Alert system.

### **Poison Control:**

For help in a poison emergency call:

Poison Control: 1-800-222-1222

YSU Environmental and Occupational Health and Safety: (330) 941-3700

YSU Police: (330) 941-3527

### **Drug Overdose:**

The symptoms of a drug overdose can vary dramatically. For example, people who overdose on stimulant drugs might experience symptoms quite similar to a heart attack. They may have a racing pulse, chest pain, and a feeling of impending death. People who overdose on sedating drugs might seem intensely sedated and sleepy. They might even turn blue, due to the lack of oxygen reaching their vital tissues. While symptoms can vary, there are signs commonly associated with a drug overdose. Anyone who experiences symptoms within this list need immediate medical attention:

- Convulsions.
- Agitation.
- Slow or difficult breathing.
- Vomiting.
- Pupils that don't react in response to light.
- Sweating or dry skin.
- Unresponsiveness.
- Violent behavior.

If you suspect someone is suffering from a drug overdose, contact the **YSU Police immediately at (330) 941-3527 or 911 from a campus phone.**

**Unidentified Drugs and Paraphernalia:**

If you encounter an unknown powder or substance use caution when handling it. Be aware that certain commonly used drugs are “transdermal” which means the pharmaceutical can be absorbed through the skin. Fentanyl, in particular, can potentially be lethal; which is frequently used as a cutting agent for cocaine and heroin.

If you encounter unknown powder or substances, contact the YSU Police immediately at (330) 941-3527 or 911 from a campus phone.

- Do not touch, or handle the unknown substance.
- Narcan (Naloxone) is available, and YSU Police officers carry and are trained in its use.
- Secure the area where the substance is located until the YSU Police arrive.

Drug paraphernalia can also be dangerous due to sharp edges (crack pipes), biological (syringes), and any residual drug or substance transferred from handling. If you encounter any drug paraphernalia, do not handle it; secure the area and contact the YSU Police at (330) 941-3527.

# Fire and Chemical Related Incidents

## Fire:

### **If You Discover a Fire:**

- Manually activate the fire alarm via the nearest pull station. The pull stations are RED and are labeled FIRE; they are usually located near exits.
- Exit the building, closing the doors behind you. **DO NOT use the elevators.**
- Call YSU Police at (330) 941-3527, or 911 from any campus phone.

### **Once Fire Alarm is Activated:**

- Walk to the nearest exit. **Do not use the Elevators.**
- Those that are unable to rapidly evacuate the building should move to a stairwell landing and wait for assistance from first responders. Inform first responders and the YSU Police of persons who have not been evacuated.
- Notify YSU Police or fire personnel if you know that someone is trapped.
- Gather outside at a designated assembly area and **DO NOT** re-enter the building until instructed to do so by YSU Police.

**Remember:** *NEVER IGNORE A FIRE ALARM!* Evacuation is mandatory unless emergency personnel direct you not to do so.

### **If Trapped in a Room:**

- Place wet cloth material around or under the door to prevent smoke from entering the room.
- Close as many doors as possible between you and the fire.
- Be prepared to signal someone outside; **DO NOT** break glass unless absolutely necessary as outside smoke may be drawn into the room.

### **If Caught in Smoke:**

- Drop, and crawl toward exit.
- Stay low to the floor and hold your breath as long as possible.

### **Using a Fire Extinguisher:**

- When safe to do so, use the nearest extinguisher to fight small fires.

### **Remember PASS and RACE!**

*Pull* the pin on the extinguisher handle.

*Aim* low at the base of the fire.

*Squeeze* the handle.

*Spray* from side to side.

**Rescue:** Assist anyone in immediate danger from the fire, if it does not endanger your life.

**Alarm:** Sound the alarm by calling 3527 and activating a fire alarm pull station.

**Confine:** Close doors and windows.

**Extinguish:** Use a fire extinguisher, or evacuate the area if the fire is too large for a fire extinguisher.

### **Explosion:**

Explosions can occur from natural gas leaks, chemicals, boilers or other items that are under pressure. If an explosion occurs and you are in the immediate area, take cover under a sturdy object such as a desk. Be prepared for further explosions.

- Try to remain calm.
- Stay away from windows, objects that may fall on you, and electrical equipment.
- Evacuate the building carefully, watch for falling objects while you are exiting the building.
- If you should become trapped, yell or bang on any metal in the vicinity.
- Do not use the elevators.
- Do not move seriously injured victims unless they are in immediate danger such as fire or the building collapsing.
- **Contact YSU Police at (330) 941-3527 or 911 from a campus phone.**
- Give YSU Police all pertinent information regarding the explosion.
  - Location.
  - If anyone is injured and the extent of the injuries.
  - Your contact and information.

### **Chemical Release:**

#### **For a Major Hazardous Spill or Leak:**

- Sound the fire alarm to evacuate the building if fumes or smoke are present.
- **Contact YSU Police at (330) 941-3527 or 911 from a campus phone.**
- Give YSU Police a complete description of the incident. Describe the type of accident;(fire, explosion, chemical spill, leaking drum). If the incident is a chemical spill, and you know the name of the chemical, inform the dispatcher.
- Identify the building where the incident occurred and the room number or location of the incident.
- If the incident involves a chemical spill, give the approximate amount of the spill.
- Give your name and the telephone number from which you are calling.
- Note any injuries.

#### **For a Major Hazardous Spill or Leak that Occurs Around the University:**

- You will be alerted by either the Mass Communications System (PA System), or the PenguinAlert.
- Avoid the contaminated area.
- Follow the directions of emergency personnel.
- If told to evacuate, follow the prescribed route in the campus evacuation section or the route instructed by emergency personnel.
- **For questions regarding chemical data sheet information, cleanup or other inquires, contact Environmental and Occupational Health and Safety at (330) 941-3700.**

## **Nuclear Incident:**

An accident at a nuclear power plant could result in dangerous levels of radiation that could affect the health and safety of those on the campus.

There are four levels of an emergency at a nuclear power plant:

- *Notification of an Unusual Event:* Actual or potential degradation of the level of safety of the plant or indication of a security threat to the facility.
- *Alert:* Actual or potential substantial degradation of the level of safety of the plant or a security event that involves probable life threatening risks to site personnel or damage to site equipment because of intentional malicious dedicated efforts of a hostile attack.
- *Site Area Emergency:* Actual or likely major failures of plant systems needed for protection of the public.
- *General Emergency:* Actual or imminent substantial core degradation or melting with potential for loss of containment integrity or security events that result in an actual loss of physical control of the facility.

Two nuclear power plants *could* affect the campus:

- Beaver Valley Power Station; Hookstown PA      50 Miles from campus.
- Perry Nuclear Power Plant; Perry Ohio.      72 miles from campus.

In the event of a nuclear incident, the Penguin Alert or the Simplex campus paging system will alert the campus community.

## **Weather Related Incidents**

### **Tornado:**

A tornado shelter is the lowest level of the building away from windows.

- Stay indoors, be alert to falling objects.
- Immediately walk to a tornado shelter area.
- 

#### **If you are in a building:**

- Go to the lowest level of the building, find an interior area (e.g., interior hall, closet, or bathroom). Seek refuge under a table or desk kneeling face down with your hands covering your head to reduce injury. If available, cover yourself with a coat or other such material.
- Avoid areas that have a large roof span that may collapse: auditoriums, gymnasiums, etc.
- Stay away from windows and glass, and unsecured objects such as filing cabinets or bookcases.
- Do not use the elevators.

#### **If you are outside:**

- Lie flat on the ground in a depression and cover the back of your head and neck with your hands.
- Do not seek cover in an automobile or under a tree.

#### **If driving a vehicle:**

- Get out and seek shelter in a building or low area; never try to outrun a tornado.
- Never try to “out run” a tornado.

Remain in the safe area until an “all clear” message is received via the PA system or PenguinAlert.

Note that all buildings may not have a basement, in this case you should find an area of the building that is away from windows/glass and objects that could fall.

The best area for a tornado shelters in these buildings:

Ward Beecher: 1<sup>st</sup> Floor  
Moser Hall: Basement  
Lincoln Hall: 1<sup>st</sup> Floor  
Meshel Hall: Basement

## **Earthquake:**

Keep in mind that most earthquakes are of a short duration and that injury usually occurs from falling objects. With that in mind, the following procedures can assist you in the case of an earthquake.

### **If in a building:**

- Remain calm.
- Stay inside the building.
- Find cover under a sturdy object such as a desk or in a door frame.
- Watch for falling objects.
- Stay away from windows and any other objects, which may fall on you.

### **If you are outside:**

- Go to an open, area free of trees, power lines and away from buildings.
- Cover your head and watch for falling objects.

### **After the earthquake is over:**

- Expect aftershocks so remain protected.
- Remain calm.
- Follow the instruction of YSU Police and evacuate the building if told to do so.
- When evacuating, watch for falling objects and walk carefully as the floor or steps may be damaged.
- Do not use the elevators.
- Do not move seriously injured persons unless there is danger from fire or building collapse.
- Do not re-enter the building.
- Do not light cigarettes, matches, lighters or use cellular phones as this may cause an explosion if natural gas is present in the immediate area.

## **Flood:**

Floods can occur anytime of the year. Flood waters can appear suddenly (flash flood), or can rise slowly. If buildings are flooded, care should be exercised when electrical appliances are submerged. Report flooding bathrooms, or classrooms to facilities. Contact facilities at (330) 941-3239.



## **Disruption of Public Services**

### **Power Outages:**

The inherent danger during a major power outage is panic. All University personnel should stay calm. In the event of a major campus-wide outage, the University has emergency generators that will provide limited temporary power to some areas of the campus. To report a minor localized power outage, call **University Facilities at (330) 941-3239**.

#### **Major Campus-Wide Power Outages:**

- Remain calm, the power will be restored.
- Per University Policy, do not use candles or any other type of flame for light.

#### **If People are trapped in an Elevator:**

- Contact the YSU Police at (330) 941-3527.
- Should you ever become stuck in an elevator, don't panic. Use the in-car emergency phone to call for help.
- Under no circumstances should you try to pry the doors, or occupy the hoist way. Exposure to the moving equipment in the shaft is dangerous and could potentially be lethal.

### **Water Outage/Restriction:**

A water outage can occur at any time, for a variety of reasons, and usually without warning. There is a difference between a water outage (no running water) and a drinking water restriction (water is not suitable for consumption or cooking, but is available).

The water for the University is provided by the City of Youngstown. If there is a restriction on consumption, that information will be relayed to the campus community. To report a localized outage or problem in your building, contact facilities at (330) 941-3239.

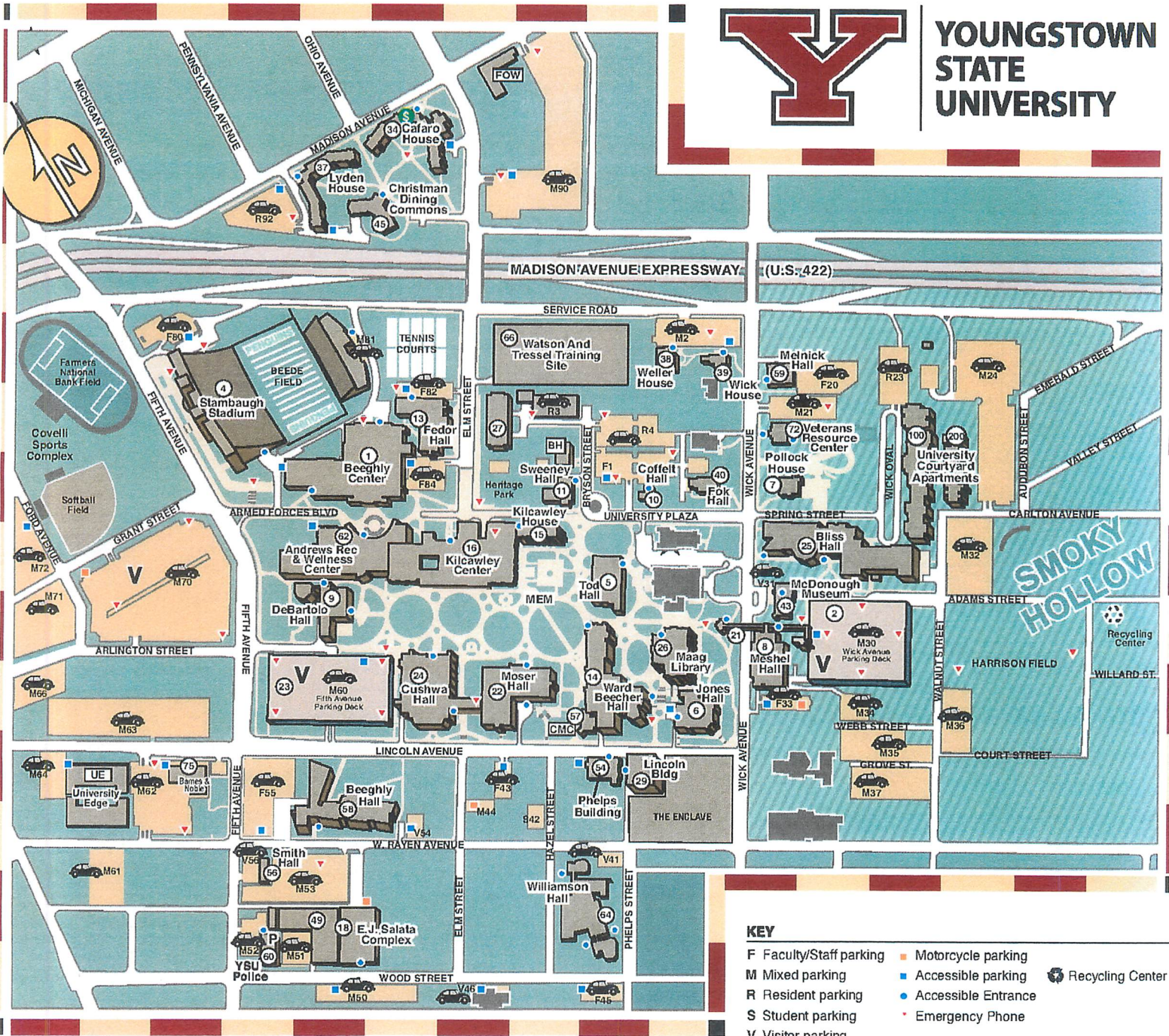
### **Gas Leak:**

If you smell gas inside or outside the building, contact the **YSU Police immediately at (330) 941-3527 or 911 from a campus phone**. Do not create sparks by turning on or off lights, or ignite any flames.

# Campus Map



**YOUNGSTOWN  
STATE  
UNIVERSITY**



**KEY**

- F Faculty/Staff parking
- M Mixed parking
- R Resident parking
- S Student parking
- V Visitor parking
- P YSU Police
- Motorcycle parking
- Accessible parking
- Accessible Entrance
- Emergency Phone
- Recycling Center

**TO:** YSU Board of Trustees  
**FROM:** The Office of Alumni Engagement and University Events  
**DATE:** June 2019  
**SUBJECT:** **Alumni Engagement and University Events 2019 Events**

---

*The calendar below lists all scheduled events that involve local alumni, alumni in chapters across the country, Pete's Pride volunteers and campus and community events that are produced or assisted by Alumni Engagement or University Events. For questions or more information on any of these events, please call 330-941-2136.*

**Saturday, June 1**

**Streetscape**  
Purpose: Community service and engagement on behalf of Pete's Pride  
Place: Downtown Youngstown  
Time: 8:00 am  
Contact: Heather Belgin – 330-941-1591 or [habelgin@ysu.edu](mailto:habelgin@ysu.edu)

**Friday, June 28**

**YSU Night with the Scrappers** (Picnic and game)  
Purpose: Regional alumni event  
Place: Eastwood Field  
Time: 5:30 p.m.  
Contact: Catherine Cala – 330-941-2752 or [cacala@ysu.edu](mailto:cacala@ysu.edu)

**Friday, June 28**

**Pete's Pride at Penguin Preview Day**  
Purpose: Aid in student recruitment efforts  
Place: WATTS Center  
Time: 8:00 a.m.  
Contact: Brittany Defibaugh – 330-941-7170 or [bldefibaugh@ysu.edu](mailto:bldefibaugh@ysu.edu)

**Saturday, June 29**

**Indianapolis Alumni Chapter Dinner**  
Purpose: Formation gathering for new Indianapolis Alumni Chapter  
Place: Buca Di Beppo  
Time: 5:00 p.m.  
Contact: Heather Belgin – 330-941-1591 or [habelgin@ysu.edu](mailto:habelgin@ysu.edu)

**Friday, July 5**

**Skeggs Lecture Series presents Kevin Smith**  
Place: Stambaugh Auditorium  
Time: 6:00 pm private meet and greet  
7:00 pm lecture  
Contact: Jackie LeViseur – 330-941-2136 or [jmlevisueur@ysu.edu](mailto:jmlevisueur@ysu.edu)

**Saturday, July 13**

**Pete's Pride at Sumer Festival of the Arts**  
Purpose: Community outreach to promote alumni programs and YSU  
Place: Tent on campus core  
Time: 10:00 a.m.-6:00 p.m.  
Contact: Brittany Defibaugh – 330-941-7170 or [bldefibaugh@ysu.edu](mailto:bldefibaugh@ysu.edu)

**Sunday, July 14**

Purpose:  
Place:  
Time:  
Contact:

**Ladies Day Out**

(Brunch, speaker, Summer Festival of the Arts)  
Alumnae affinity event focusing on women's issues.  
Williamson Hall, Atrium  
11:00 a.m.  
Catherine Cala – 330-941-2752 or [cacala@ysu.edu](mailto:cacala@ysu.edu)

**Saturday, August 3**

Purpose:  
Place:  
Time:  
Contact:

**Cleveland Alumni Chapter Outing**

Social gathering at Cleveland Indians game  
Progressive Field  
7:10 p.m.  
Heather Belgin – 330-941-1591 or [habelgin@ysu.edu](mailto:habelgin@ysu.edu)

**Saturday, August 3**

Purpose:  
Place:  
Time:  
Contact:

**Atlanta Alumni Chapter Outing**

Social gathering at Atlanta United game  
Mercedes-Benz Stadium  
5:00 p.m.  
Heather Belgin – 330-941-1591 or [habelgin@ysu.edu](mailto:habelgin@ysu.edu)

**Wednesday, August 14**

Purpose:  
Place:  
Time:  
Contact:

**State of the University**

Presidential address to campus and community  
Chestnut Room  
9:00 a.m.  
Jackie LeViseur – 330-941-2136 or [jmlevisueur@ysu.edu](mailto:jmlevisueur@ysu.edu)

**Thursday, August 15**

Purpose:  
Place:  
Time:  
Contact:

**Akron/Canton Alumni Chapter Outing**

Social gathering at Akron Rubber Ducks game  
Canal Park  
7:05 p.m.  
Heather Belgin – 330-941-1591 or [habelgin@ysu.edu](mailto:habelgin@ysu.edu)

**Friday, August 23**

Purpose:  
Place:  
Time:  
Contact:

**Pittsburgh Alumni Chapter Mixer**

Team building/social gathering for alumni chapter  
Lumberjaxes  
6:00 p.m.  
Heather Belgin – 330-941-1591 or [habelgin@ysu.edu](mailto:habelgin@ysu.edu)

**Saturday, August 31**

Purpose:  
Place:  
Time:  
Contact:

**Tampa Bay Alumni Chapter Outing**

Social gathering at Tampa Bay Rays game  
Tropicana Field  
6:10 p.m.  
Heather Belgin – 330-941-1591 or [habelgin@ysu.edu](mailto:habelgin@ysu.edu)

**Saturday, September 7**

Purpose:

Place:

Time:

Contact:

**Dana School of Music All Alumni Reunion**

(Cocktails, group photo, dinner, live music)

Dana All Alumni Reunion celebrating 150 years with proceeds supporting a Dana Alumni Endowment

Powers Auditorium Grand Lobby

6:00 p.m.

Catherine Cala – 330-941-2752 or [cacala@ysu.edu](mailto:cacala@ysu.edu)

**September 13-15**

Purpose:

**Veterans & ROTC Alumni Reunion Weekend**

Alumni affinity event, recognition awards, fundraiser

**Friday, September 13**

Place:

Time:

**Veterans & ROTC Alumni Reunion Dinner**

(Cocktails, dinner, speaker, Cincinnatus Award)

Williamson Hall, Atrium

5:30 p.m.

**Saturday, September 14**

Place:

Time:

**YSU vs Duquesne Football Game**

Stambaugh Stadium

2:00 p.m.

**Sunday, September 15**

Place:

Time:

Contact:

**4<sup>th</sup> Annual Golf Event Benefiting YSU ROTC**

Avalon Golf and Country Club, Warren, OH

8:30 registration/10:00 a.m. Shotgun Start

Catherine Cala – 330-941-2752 or [cacala@ysu.edu](mailto:cacala@ysu.edu)

**Friday, October 11**

Purpose:

Place:

Time:

Contact:

**Criminal Justice and Forensic Sciences 50<sup>th</sup> Anniversary**

Reconnect with alumni to celebrate 50 years of the department along with the Peace Academy

Kilcawley Center Chestnut Room

5:30 p.m.

Catherine Cala – 330-941-2752 or [cacala@ysu.edu](mailto:cacala@ysu.edu)

**Wednesday, October 16**

Purpose:

Place:

Time:

Contact:

**Half Century Club Featuring the Class of 1969**

Celebrate this 50-year milestone with dinner and induction ceremony, followed by the Skeggs lecture

Christman Memorial Hall, Stambaugh Auditorium

5:00 p.m.

Catherine Cala – 330-941-2752 or [cacala@ysu.edu](mailto:cacala@ysu.edu)

**Wednesday, October 16**

Place:

Time:

Contact:

**Skeggs Lecture Series presents Martin Sheen**

Stambaugh Auditorium

6:00 pm private meet and greet

7:00 pm presentation

Jackie LeViseur – 330-941-2136 or [jmlevisueur@ysu.edu](mailto:jmlevisueur@ysu.edu)



## OFFICE OF ALUMNI ENGAGEMENT AND UNIVERSITY EVENTS OUTREACH UPDATE

---

### Mission

The mission of the Office of Alumni Engagement and University Events is to promote and serve our alumni and the University.

- Create relevant programs to foster life-long engagement with Youngstown State University.
- Cultivate relationships in order to channel alumni interests in a meaningful way, while connecting them with others.
- Communicate the achievements of the University and our alumni to maintain its traditions and promote pride.

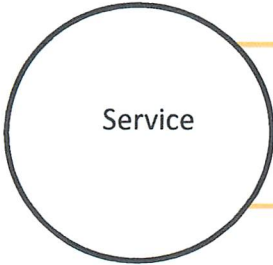
### Who are YSU Alumni?

- 52% Male
- 48% Female
  
- 94,000 Living Alumni
  
- 52% Emailable
  
- 20% CLASS
- 6% Cliffe College of CCAC
- 13% Beeghly College of Education
- 25% College of STEM
- 17% Williamson College of Business Administration
- 12% Bitonte College of HHS
- 7% Graduate Studies
  
- Degree Counts through Academic Year 2018
  - 2 year degrees: 15,405
  - 4 year degrees: 81,257
  - Masters degrees: 14,973
  - Doctoral degrees: 370

## Alumni & Events Outreach Focus Areas



- Networking
- Professional Development
- Nationally Recognized Lectures and Panels
- Campus and Alumni Speakers



- Pete's Pride
- National Volunteer Week
- Local Community Service
- Hosting Student Groups



- Social Networking
- Athletic Events
- Affinity Group Reunions
- Sharing YSU news and information

## The Role of Chapters and Groups



PROMOTE AND SERVE

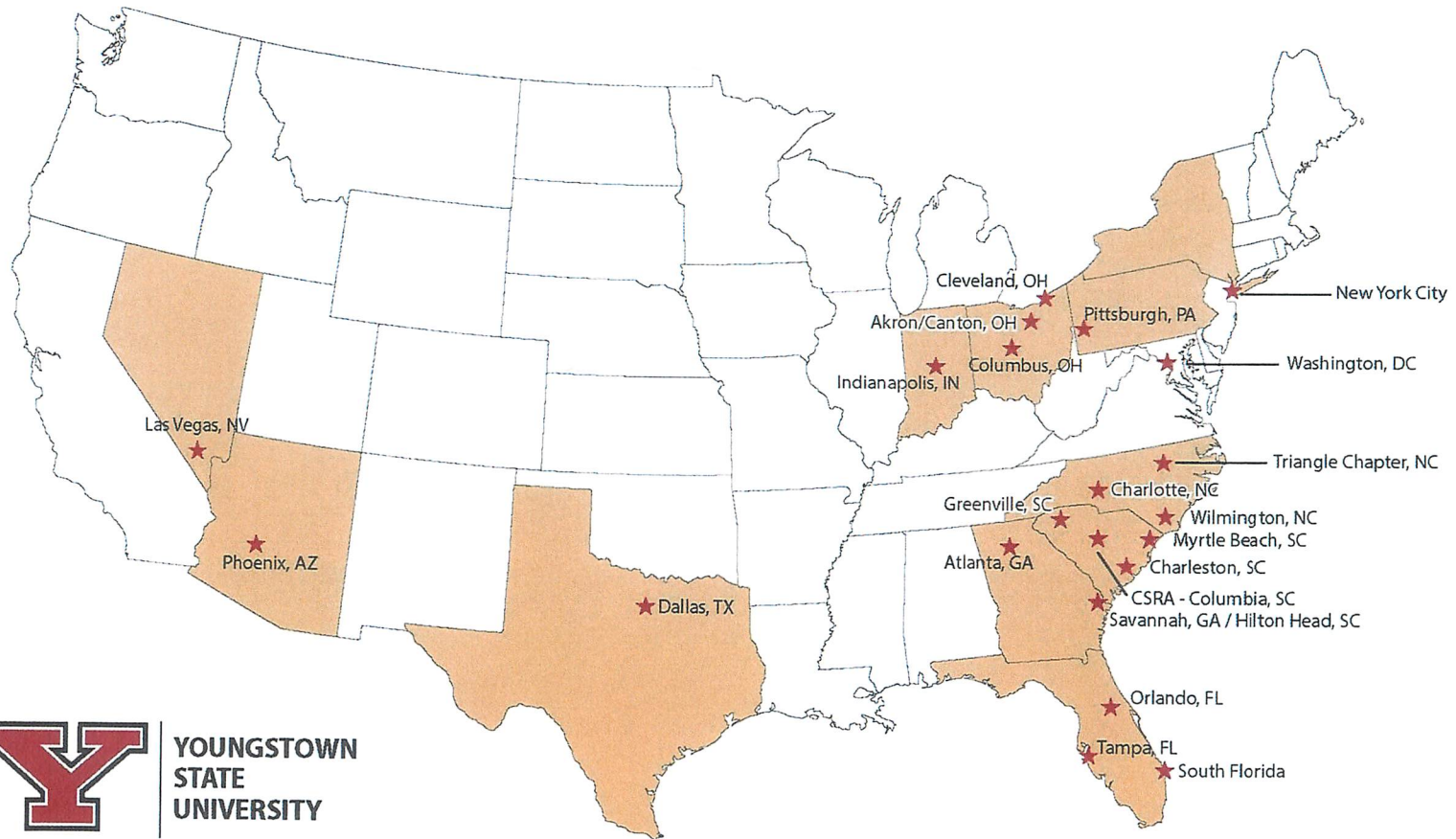


Relevant and Meaningful Programs

Network and Group Leaders



# Youngstown State University Alumni Chapters



**YOUNGSTOWN  
STATE  
UNIVERSITY**

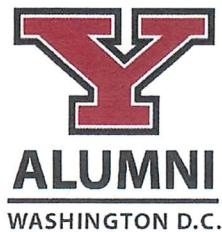
**OFFICE OF ALUMNI ENGAGEMENT**



## Two Chapter Examples



- Total Alumni in Area - 857
- 5 events since July 2017 inception
- Chapter leaders are 2002 & 2004 grads
- Recent events: river cleanup, brewery mixer, Atlanta Braves game
- Pete's Pride members engaged in postcard writing campaign to admitted students and National Volunteer Week service project as YSU representatives



- Total Alumni - 1542
- 4 events since February 2018 inception
- Chapter leader is a 2015 grad
- Recent events: National Mall cleanup, networking reception, Washington Nationals
- Pete's Pride members engaged in postcard writing campaign to admitted students and National Volunteer Week service project as YSU representatives




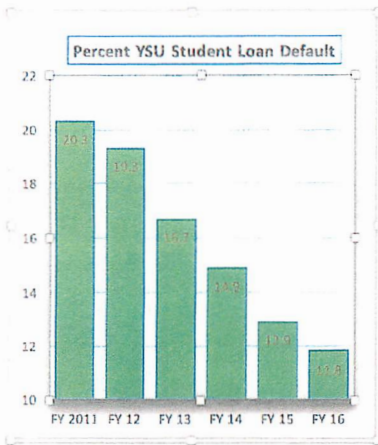


**International up**

YSU is among the nation's leaders in the growth of international student enrollment. According to the latest Open Doors report from the Institute of International Education, YSU is the second fastest growing public university in the United States among schools with at least 300 international students. YSU's total number of international students, including enrolled and students on internships, jumped from 363 to 546 between Fall 2016 and Fall 2017, an increase of 183 students or 50 percent. On top of that, YSU is about to file updated enrollment numbers with IIE that show even more growth in Fall

2018 - 581 international students, up another 35 students from Fall 2017. That means that YSU's international student enrollment has grown by 218 students or 60 percent over the last two years.

Year	International Students
2018	581
2017	546
2016	363
2015	387
2014	336

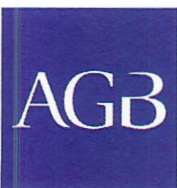



**Default down**

YSU student loan default rates have dropped nearly in half in the last six years, a trend university administrators say is the result of increased focus on student success, more scholarships and keeping costs low. "There are several initiatives we have put into place, and we've certainly made tremendous strides," said Elaine Ruse, director of Financial Aid and Scholarships. YSU's student loan default rate stood at 20.3 percent in fiscal year 2011, but it has fallen every year since. Preliminary results for fiscal year 2016, the year for which the latest data is available, set the rate at 11.8 percent, down nearly 9 percentage points.

**New provost**

Brien N. Smith, right, who increased enrollment and graduation rates and raised millions of dollars in gifts and grants during seven years as dean of the Scott College of Business at Indiana State University, has been named provost and vice president for Academic Affairs. Smith, who will be YSU's second-highest ranking officer and oversee all academic operations of the university, was selected after a four-month search that drew more than 60 applicants from across the country.



**BoT honor**

The YSU Board of Trustees received the John W. Nason Award for Board Leadership from the Association of Governing Boards of Universities and Colleges, one of the nation's top honors given to governing boards demonstrating exceptional leadership and initiative. Andrew Louder, AGB's director of programs, said the YSU board "has played an indispensable role in ensuring the sustainability of this institution going forward, and as a result a bright future for YSU's many beneficiaries." Louder announced the award during a visit to campus in March, and the award was officially presented at AGB's national conference in Orlando, Fla., in April.

**Excellence I: SBDC**

The Ohio Small Business Development Center at YSU, which last year helped area businesses generate nearly \$100 million in sales, received the national SBDC Excellence and Innovation Award from the U.S. Small Business Administration. The SBDC at YSU was selected from among the nearly 1,000 SBDCs across the country for excellence in providing value to small businesses and advancing program delivery and management through innovation.



**Excellence II: PKP**

The YSU chapter of the Honor Society of Phi Kappa Phi has achieved Circle of Excellence Platinum status for 2018-19, the highest award in the society's Circle of Honor Awards Program. Phi Kappa Phi, the nation's oldest, largest and most selective honor society for all disciplines, recognizes outstanding chapters for promoting excellence on the local campus and engaging the community of scholars each year. "We are so honored to receive this award which recognizes the dedication and hard work of all the students, faculty and staff who are committed to the love of learning," said Karen Becker, president of the YSU chapter and director of First Year Experience at YSU.

### First of its kind

The YSU Centofanti Symposium hosted a first-of-its-kind panel discussion featuring survivors of some of the nation's most infamous mass shootings, including Sandy Hook Elementary School, the Pulse Nightclub and Columbine High School. The discussion in Stambaugh Auditorium in Youngstown attracted nearly 1,500 guests as panelists shared their stories of grief, pain and survival. Pictured here, the group participates in a pre-event meeting with students and the news media. From the left are: Kaitlin Roig, a former teacher at Sandy Hook Elementary School in Newtown, Conn., site of a mass shooting in 2012; Brandon Wolf, a survivor of the Pulse Nightclub shooting in Orlando, Fla., in 2016; Susan Bro, mother of Heather Heyer, who was killed by a white supremacist in Charlottesville, Va., in 2017; Fred Guttenberg, whose daughter was killed in the shooting at Stoneman Douglas High School in Parkland, Fla., in 2018; and Susan Klebold, whose son was one of the shooters at Columbine High School in 1999. The event was part of the YSU Lecture Series.



### Our students

**Anna Henkels**, senior Advertising and Public Relations major, won the Best Presenter Award, and the YSU Ads Club came in third overall, at the American Advertising Federation's National Student Advertising Competition in Louisville, Ky.

The world premiere of an orchestral piece composed by students in the Dana School of Music was featured at the Gala Concert in celebration of the school's 150<sup>th</sup> anniversary. The piece was composed by Dana students **Max Franko, Brandon Hackimer, Brendan McEvoy, Juan Rodriguez, Taylor Natoli** and **Alyssa Kordecki**, under the supervision of Dana faculty member David Morgan.



A team of YSU students, left, placed first at the 2019 American Foundry Society Southeast Regional Casting Competition in Savannah, Ga. The team includes **Adam Cunning, Andrew Prokop, Rachel Hart, Nick Huggins, Mike Morocco, Christiaan Randall-Posey** and **Justin Stellmar**. The students designed a 14-inch aluminum alloy wheel, conducted stress and casting simulations in labs at YSU, had the mold printed on YSU's 3D sand printer, poured it at YSU's foundry in Bliss Hall and submitted it in the competition.

**Jonathan Creed** and **Jared Latone** of the YSU Bass Fishing Club earned a berth in the 2020 intercollegiate national bass fishing championship after placing sixth in the FLW Yeti College Open at Kentucky Lake. Creed and Latone hooked more than 39 pounds of fish over two days and beat out nearly 200 other college teams from across the nation.

A team of students in the Williamson College of Business Administration earned first place at the Beta Alpha Psi Best Practices Midwest regional meeting and will head to the international competition this summer. The presentation team consisted of **Abbey Berick, Carly Chopp, Nicholas Parsons** and **Austin Sambuco**, with contributions by **Marcy Grossen**.

**Mario Ricciardi**, an Advertising and Public Relations major, received a Student Silver ADDY Award for video cinematography at the Akron ADDY Awards. The annual awards program recognizes creative excellence in locally-created advertising. Ricciardi's submission was a music video created to accompany the release of the latest album by a local musician.

YSU's American Society of Civil Engineers Student Chapter claimed many top honors at Ohio Valley Student Conference. The Steel Bridge, Geotechnical and Concrete Frisbee teams all took first place, while the Concrete Canoe team finished second.