



**YOUNGSTOWN
STATE
UNIVERSITY**

**BOARD OF TRUSTEES
INSTITUTIONAL ENGAGEMENT COMMITTEE**

**Allen L. Ryan, Jr., Chair
Anita A. Hackstedde, Vice Chair
All Trustees are Members**

**Tuesday, September 20, 2022
3:00 p.m. or immediately following
previous meeting**

**Tod Hall
Board Meeting Room**

AGENDA

- A. Disposition of Minutes for Meeting Held June 22, 2022**
- B. Old Business**
- C. Committee Items**

1. Institutional Engagement Action Items

- Tab C.1.a. = Tab 1 a. Resolution to Accept Gift of Real Estate**
Greg Morgione, Associate General Counsel will report.
- Tab C.1.b. = Tab 2 b. Resolution to Modify Partnerships, Centers, and Related Arrangements Policy, 3356-10-22**
Brien Smith, Provost and Vice President for Academic Affairs and Amy Cossentino, Associate Provost for Strategy and Engagement and Dean of Sokolov Honors College will report.

2. Institutional Engagement Discussion Items

- Tab C.2.a. = Tab 3 a. YSU Foundation Quarterly Gift Report**
The YSU Foundation received 676 outright gifts and 3 pledges totaling \$2,055,675.03, pledge payments totaling \$374,131.50 and 7 new planned gift commitments totaling \$3,080,000.00 for the fourth quarter of Fiscal Year 2022.
Paul McFadden, President YSU Foundation will report.
- Tab C.2.b. = Tab 4 b. Division of Workforce Education & Innovation Update**
Jennifer Oddo, Executive Director, Strategic Workforce Education and Innovation will report.
- Tab C.2.c. = Tab 5 c. Yield Update: Admission to Orientation and Orientation to Enrollment**
Claire Berardini, Associate Provost Student Success and Katie Burdette, Coordinator, Marketing and Communications will report.
- Tab C.2.d. = Tab 6 d. Actions Associated with Enhancing Fall 2023 Enrollment**

D. New Business

E. Adjournment



**YOUNGSTOWN
STATE
UNIVERSITY**

RESOLUTION TO ACCEPT GIFT OF REAL ESTATE

WHEREAS, Youngstown State University Board of Trustees policy provides that the Board of Trustees may be the recipient of gifts of real estate as determined by the President and as recommended to the Institutional Engagement Committee of the Board of Trustees; and

WHEREAS, the Youngstown State University Foundation owns approximately 166.3 acres of real estate, which includes a 5,132 square foot single-family residence, located on Tippecanoe Road in Boardman Township, as identified on the property map ("Real Estate") attached hereto as Exhibit A; and

WHEREAS, Warren P. ("Bud") Williamson, III recently gifted the Real Estate to the YSU Foundation with the directive that the Real Estate would be transferred to Youngstown State University ("University) for use by the University to support innovation and education across all colleges and the Division of Workforce Education and Innovation ("DWEI"), with a focus on science-based activities, including science, technology, engineering and mathematics ("STEM") programs, instruction, and academic teams, and K-12 outreach and participation; and

WHEREAS, the Real Estate is not to be developed for residential and commercial purposes or used for sports and recreational applications; and

WHEREAS, the Real Estate shall be named the Williamson Innovation Park ("WIP"); and

WHEREAS, Warren P. ("Bud") Williamson, III established the Williamson Innovation Park Champion Fund at the YSU Foundation with a gift of Three Million Dollars (\$3,000,000.00) to fund the salary and related costs of the Williamson Innovation Park Champion, who will be the leader of educational activities at the WIP; and

WHEREAS, Warren P. ("Bud") Williamson, III established the Williamson Innovation Park Property Enhancement Fund at the YSU Foundation with an initial gift of \$400,000, and an additional pledge of \$500,000 over a five-year period to be used by the University for costs associated with maintenance, upkeep and enhancement of the Real Estate; and

WHEREAS, the Youngstown State University Foundation seeks to gift the Real Estate to the Board of Trustees for use by the University as provided herein; and

WHEREAS, the President recommends that the Board of Trustees accept the gift of Real Estate from the Youngstown State University Foundation.

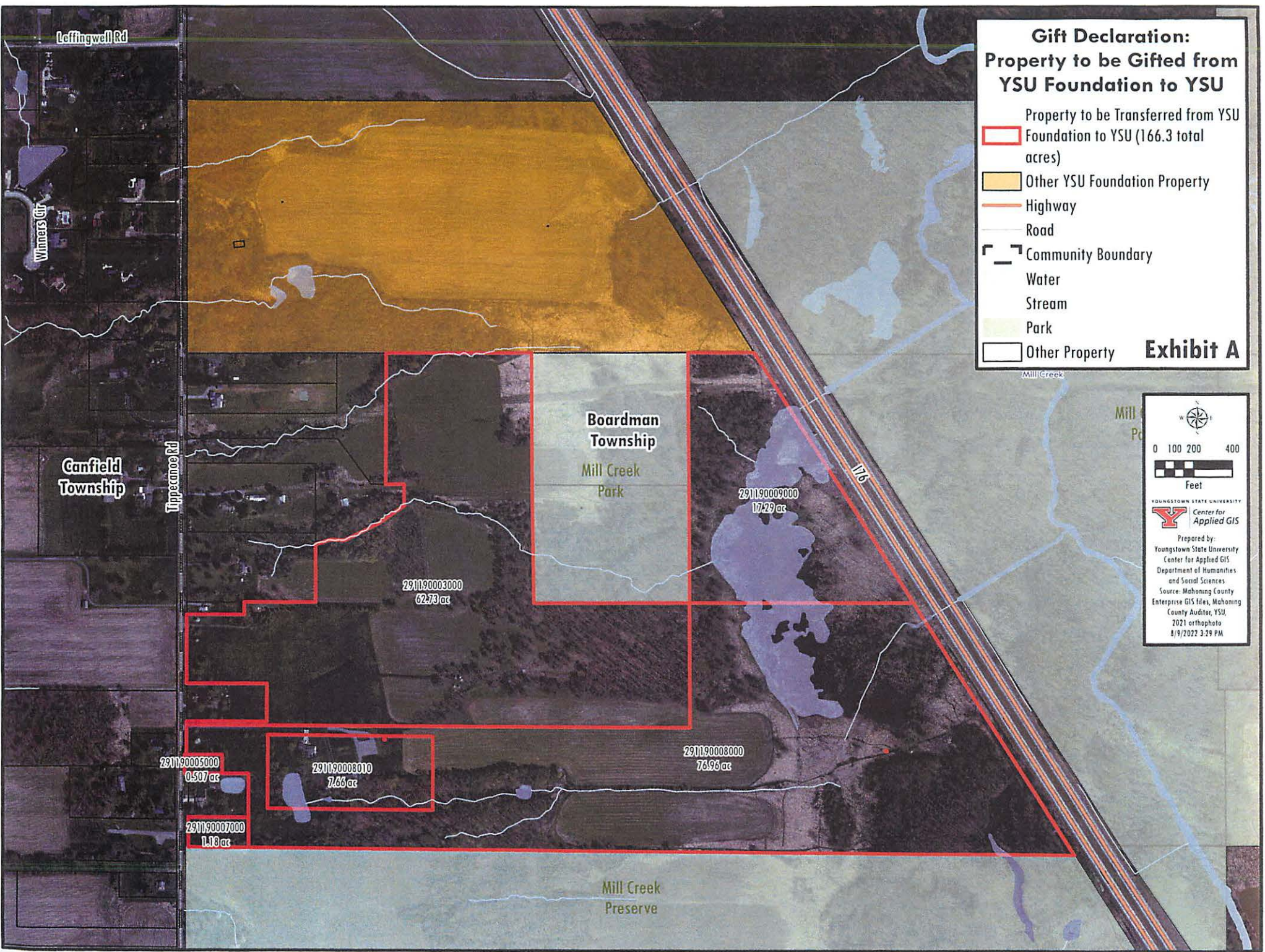
NOW, THEREFORE, BE IT RESOLVED, that the Board of Trustees does hereby accept the gift of Real Estate from the Youngstown State University Foundation.

**Board of Trustees Meeting
September 21, 2022
YR 2023-**

Gift Declaration: Property to be Gifted from YSU Foundation to YSU

- Property to be Transferred from YSU Foundation to YSU (166.3 total acres)
- Other YSU Foundation Property
- Highway
- Road
- Community Boundary
- Water
- Stream
- Park
- Other Property

Exhibit A





0 100 200 400
Feet



Feet

YOUNGSTOWN STATE UNIVERSITY
Center for Applied GIS

Prepared by:
Youngstown State University
Center for Applied GIS
Department of Humanities
and Social Sciences
Source: Mahoning County
Enterprise GIS files, Mahoning
County Auditor, YSU,
2021 orthophoto
8/9/2022 3:29 PM



**YOUNGSTOWN
STATE
UNIVERSITY**

**RESOLUTION TO MODIFY PARTNERSHIPS, CENTERS,
AND RELATED ARRANGEMENTS POLICY, 3356-10-22**

WHEREAS, University Policies are reviewed and reconceptualized on an ongoing basis; and

WHEREAS, this process can result in the modification of existing policies, the creation of new policies, or the deletion of policies no longer needed; and

WHEREAS, action is required by the Board of Trustees prior to replacing and/or implementing modified or newly created policies, or to rescind existing policies; and

WHEREAS, the Partnerships, Centers, and Related Arrangements policy has been reviewed and formatted in accordance with Policy 3356-1-09, Development and Issuance of University Policies.

NOW, THEREFORE, BE IT RESOLVED, that the Board of Trustees of Youngstown State University does hereby approve the modification of the University Policy Partnerships, Centers, and Related Arrangements, policy number 3356-10-22, shown as Exhibit __ attached hereto. A copy of the policy indicating changes to be made is also attached.

**Board of Trustees Meeting
September 21, 2022
YR 2023-**



YOUNGSTOWN
STATE
UNIVERSITY

Explanation to Modify *University Policy*:

3356-10-22 Partnerships, centers, and related arrangements.

This policy is being reviewed pursuant to the five-year review cycle and modified to provide guidelines on external funding of centers or institutes (CI). Proposed changes and additions provide guidance for external funding of CIs, update review cycles for new and existing CIs, and more closely align with Office of Academic Affairs administrative policy governing the review and evaluation of new and existing CIs.

**Board of Trustees Meeting
September 21, 2022
YR 2023-**

3356-10-22 Partnerships, centers, and related arrangements.

Responsible Division/Office: Academic Affairs
Responsible Officer: Provost and Vice President for Academic Affairs
Revision History: September 2017: September 2022
Board Committee: Institutional Engagement
Effective Date: September 21, 2022
Next Review: 2027

- (A) Policy statement. The president is authorized and encouraged to pursue, develop, and expand partnerships, cooperative programs, contractual arrangements, and similar relationships that support and promote the mission of the university; and to establish, alter or abolish centers or institutes to advance those goals, subject to approval by the board of trustees. In extraordinary and exceptional cases when approval is urgently needed between scheduled board meetings, the president may authorize the establishment of the partnership, program, or CI, in which case this will be reported to the board of trustees at the next meeting.
- (B) Purpose. In striving to fulfill its teaching/learning, research/scholarship, and community service goals, the university actively becomes involved in the establishment of mutually beneficial partnerships or similar arrangements with a broad range of public and private entities and may establish centers or institutes (referred to as CI/CIs) to strengthen and enrich the educational (teaching and learning), research (and scholarship), and public service activities of faculty and students.
- (C) External funding.
- (1) If funding is received from external sources that requires the naming of a center or institute, the board of trustees will be notified in reports on the compilation of CIs and in reports on external funding.
 - (2) Funding from the Youngstown state university foundation may support the establishment of a center or institute named after a donor, or it may support initiatives or programming that take place within a named center or institute. Supporting funds which are independent of the naming of a center or institute

will be subject to the same policies governing the gift that established the center or institute.

(D) Procedures.

- (1) The chairperson of a department, council, committee or task force, or an individual member of the university community, may submit to the provost/vice president for academic affairs, after review by the appropriate academic dean(s) or executive director, proposals to establish partnerships, CIs, or related arrangements between the university and private or public entities.
- (2) Proposals will include:
 - (a) Statement of need and purpose;
 - (b) Description of partnership or CI and manner in which the arrangement will meet the stated need;
 - (c) Statement of the relationship between outside entity[s] and the university as outlined in the agreement;
 - (d) Identification of personnel/departments to be involved;
 - (e) Delineation of responsibilities of the university and other involved parties;
 - (f) Estimation of needs for fiscal resources, space, and equipment;
 - (g) A description of how these needs will be met;
 - (h) Work plan and budget for three years, including the sources of fiscal commitments; and
 - (i) A description of where administrative responsibility is housed and the lines of responsibility.
- (3) Proposals will be circulated to all entities or individuals that might be involved for review and feedback prior to submission to the provost/vice president for academic affairs. All approvals to

commit resources will be in writing and appended to the proposal during this process.

- (4) The provost/vice president for academic affairs will determine the departments to take part in the process.
 - (a) When the proposal involves research and/or sponsored programs, the office of research services must be contacted, and review by the director of research services is required, including written recommendation/determination about whether the proposed agreement/partnership is allowable under grants policies.
 - (b) When the proposal involves international collaboration, the international programs office must be contacted, and review by the associate provost for international and global initiatives is required, including a written statement indicating potential issues or concerns regarding immigration or other international affairs issues.
 - (c) When the proposal involves graduate programs, the graduate college must be contacted and review by the dean of the graduate college is required.
 - (d) When there are issues of ownership of intellectual property arising from the research or service mission of a proposed CI, the general counsel will review the proposal.
- (5) Upon the completion of the consultative process set forth in paragraph (D)(4)(a) to (d), the provost/vice president for academic affairs may recommend the establishment of the partnership, program or CI to the board of trustees. The board of trustees will formally approve or deny the recommendation. Approval by the board of trustees is required to establish the partnership, program or CI and to authorize the commencement of related activities and programs.
- (6) Newly established CIs will be evaluated within three years with all other CIs evaluated no less frequently than six years. The provost/vice president for academic affairs or designee will report their finding to the board of trustees. The office of academic affairs

will establish an administrative policy governing the review and evaluation of new and existing CIs.

- (7) The provost/vice president for academic affairs or designee will provide an update to the board of trustees at least annually on CIs, including, as appropriate, recommendations to discontinue CIs. Reports and updates pursuant to this policy will be made to the academic excellence and student success committee and/or the institutional engagement committee of the board of trustees, as appropriate.

3356-10-22 Partnerships, centers, and related arrangements.

Responsible Division/Office: Academic Affairs
Responsible Officer: Provost and Vice President for Academic Affairs
Revision History: September 2017: September 2022
Board Committee: Academic and Student Affairs Institutional Engagement
Effective Date: **September 7, 2017**21, 2022
Next Review: 20222027

- (A) Policy statement. The president is authorized and encouraged to pursue, develop, and expand partnerships, cooperative programs, contractual arrangements, and similar relationships that support and promote the mission of the university; and to establish, alter or abolish centers or institutes to advance those goals. subject to approval by the board of trustees, ~~establish, alter, or abolish centers, institutes, or laboratories that advance those goals.~~ In extraordinary and exceptional cases when approval is urgently needed between scheduled board meetings, the president may authorize the establishment of the partnership, program, or CI, in which case this will be reported to the board of trustees at the next meeting.
- (B) Purpose. In striving to fulfill its teaching/learning, research/scholarship, and community service goals, the university actively becomes involved in the establishment of mutually beneficial partnerships or similar arrangements with a broad range of public and private entities and may establish centers, ~~or institutes, or laboratories~~ (referred to as CH/CILsCI/CIs) to strengthen and enrich the educational (teaching and learning), research (and scholarship), and public service activities of faculty and students.
- (C) External funding.
- (1) If funding is received from external sources that requires the naming of a center or institute, the board of trustees will be notified in reports on the compilation of CIs and in reports on external funding.
- (2) Funding from the Youngstown state university foundation may

support the establishment of a center or institute named after a donor, or it may support initiatives or programming that take place within a named center or institute. Supporting funds which are independent of the naming of a center or institute will be subject to the same policies governing the gift that established the center or institute.

(D) Procedures.

- (1) The chairperson of a department, council, committee or task force, or an individual member of the university community, may submit to the provost/vice president for academic affairs, after review by the appropriate academic dean(s) or executive director, proposals to establish partnerships, CHsCIs, or related arrangements between the university and private or public entities.
- (2) Proposals will include:
 - (a) Statement of need and purpose;
 - (b) Description of partnership or CHCI and manner in which the arrangement will meet the stated need;
 - (c) Statement of the relationship between outside entity[s] and the university as outlined in the agreement;
 - (d) Identification of personnel/departments to be involved;
 - (e) Delineation of responsibilities of the university and other involved parties;
 - (f) Estimation of needs for fiscal resources, space, and equipment;
 - (g) A description of how these needs will be met;
 - (h) Work plan and budget for three years, including the sources of fiscal commitments; and
 - (i) A description of where administrative responsibility is housed and the lines of responsibility.

- (3) Proposals will be circulated to all entities or individuals that might be involved for review and feedback prior to submission to the provost/vice president for academic affairs. All approvals to commit resources will be in writing and appended to the proposal during this process.
- (4) The provost/vice president for academic affairs will determine ~~whether review of the statement of partnership by the office of the general counsel is required~~ the departments to take part in the process.
- (a) ~~When the proposal involves research and/or sponsored programs, the office of research services must be contacted, and review by the associate vice president for research~~ When the proposal involves research and/or sponsored programs, the office of research services must be contacted, and review by the director of research services is ~~required, including written recommendation/determination about whether the proposed agreement/partnership is allowable under grants policies.~~ required, including written recommendation/determination about whether the proposed agreement/partnership is allowable under grants policies.
- (b) When the proposal involves international collaboration, the international programs office must be contacted, and review by the associate provost for international and global initiatives is required, including a written statement indicating potential issues or concerns regarding immigration or other international affairs issues.
- (c) When the proposal involves graduate programs, the graduate college must be contacted and review by the dean of the graduate college is required.
- (d) When there are issues of ownership of intellectual property arising from the research or service mission of a proposed ~~CELCI~~, the general counsel will review the proposal.
- (5) Upon the completion of ~~this~~ the consultative process set forth in paragraph (D)(4)(a) to (d), the provost/vice president for academic affairs may ~~authorize implementation~~ recommend the establishment of the partnership, ~~or~~ program or ~~establishment of the center to the board of trustees.~~ The board of trustees will formally approve

or deny the recommendation. Approval by the board of trustees is required to establish the partnership, program or CI and to authorize the commencement of related activities and programs.

- (6) All relationships and CILs established under this policy will be evaluated no less frequently than every five years, with newly established relationships evaluated within three years of their creation. Newly established CIs will be evaluated within three years with all other CIs evaluated no less frequently than six years. The provost/vice president for academic affairs or designee will report their finding to the board of trustees. The office of academic affairs will establish an administrative policy governing the review and evaluation of new and existing CIs.
- (7) The provost/vice president for academic affairs or designee will provide an update to the board of trustees at least annually on CIs, including, as appropriate, recommendations to discontinue CIs. Reports and updates pursuant to this policy will be made to the academic excellence and student success committee and/or the institutional engagement committee of the board of trustees, as appropriate.

YSUF Gift Processing Summary - April, 2022 - June, 2022 Vs. April, 2021 - June, 2021

| | <u>Total April, 2022 - June, 2022</u> | <u>Total April, 2021 - June, 2021</u> | <u>Difference 2022/2021</u> |
|---|---|---|-----------------------------|
| Development (New Gifts and New Pledges): | | | |
| YSU | \$598,488.43 | \$667,613.25 | -\$69,124.82 |
| YSUF | \$1,457,186.60 | \$1,498,337.25 | -\$41,150.65 |
| Total Development (New Gifts and New Pledges) | \$2,055,675.03 | \$2,165,950.50 | -\$110,275.47 |
| Planned Giving/Charitable Gift Annuities | \$3,080,000.00 | \$130,000.00 | \$2,950,000.00 |
| Pledge Payments (For Pledges Currently or Previously Included as Development): | | | |
| YSU | \$114,322.50 | \$734,489.65 | -\$620,167.15 |
| YSUF | \$259,809.00 | \$310,518.00 | -\$50,709.00 |
| Total Pledge Payments | \$374,131.50 | \$1,045,007.65 | -\$670,876.15 |
| Non-Gift Clearing - YSU | \$0.00 | \$0.00 | \$0.00 |
| Non-Gift Clearing - YSUF | \$0.00 | \$0.00 | \$0.00 |
| Number of New Gifts | 676 | 801 | -125 |
| Number of Pledges | 3 | 14 | -11 |
| Number of Payments | 99 | 124 | -25 |
| Number of Planned Gifts/Charitable Gift Annuities | 7 | 3 | 4 |
| Non-Gift Clearing | 0 | 0 | 0 |



Youngstown State University
**Division of Workforce
Education & Innovation**

Institutional Engagement Report
September 20, 2022



Active Awards and Projects

| Project Name | Funding Partner | Status | Project Total | Contract Date | Performance Period | Description |
|---|---------------------|--------|---------------|---------------|--------------------|---|
| Community Workforce Initiatives | General Motors | Active | \$3.5M | 3/2021 | 2 years | Community Workforce Initiatives |
| Energy Storage Training and Innovation Center | General Motors | Active | \$1.5M | 3/2021 | 2 years | Energy Storage Training Center |
| Tech Prep | State of Ohio/ODE | Active | \$20K | 10/2021 | 2 year | High School CCP/ITAG, development of college new pathway programming to increase high school articulation |
| Mahoning Valley Workforce Partnership | State of Ohio/ODHE | Active | \$200K | 11/2021 | 1 year | Regional Workforce Coalition with Chamber to increase collaboration and address digital branding for the region |
| Aerospace Defense Storefront | NCDMM/America Makes | Active | \$300K | 10/2021 | 2 years | Siemens Expertise/Research Scientist |
| Hybrid Manufacturing/Mazak | NCDMM/America Makes | Active | \$2.3M | 8/2021 | 1 year | Project to advance hybrid/additive mfg |
| RAPIDS 5 | State of Ohio/ODHE | Active | \$540k | 11/2021 | 1 year | State funds to procure equipment for YSU and CCTC's |
| IMAP | OWT/ODHE | NEW | \$250k | 3/2022 | 1 year | Selected as one of 14 training providers to help Ohioans who are low income, partially unemployed, or totally unemployed participate in a training program and receive one or more technology-focused credential(s) for free.. Funding to cover up to 100 individuals. |
| Tech Cred Round 7 | State of Ohio | Active | \$10K | 5/2022 | 1 Year | Train the trainer grant funds (robotics) |
| State Funds 22/23 extension | State of Ohio | Active | \$1M | 6/2021 | 2 year | MVICC/ETC |

New Awards and Projects

| Project Name | Funding Partner | Status | Project Total | Contract Date | Performance Period | Description |
|--|---|--------|---------------|---------------|--------------------|---|
| Industry 4.0 Adoption in the SME Defense Supply Chain for Metal Castings | NCDMM/DLA/UNI | NEW | \$3.7M | 5/2022 (est) | 1 year | Drive IoT adoption/commercialization across small and medium size businesses (Chicago to East Coast) |
| IMAP | OWT/ODHE | NEW | \$250k | 3/2022 | 1 year | Selected as one of 14 training providers to help Ohioans who are low income, partially unemployed, or totally unemployed participate in a training program and receive one or more technology-focused credential(s) for free.. Funding to cover up to 100 individuals. |
| Ohio TechCred | OWT | NEW | \$100 | 5/2022 | 1 year | (1) Funding for YSU to pay for train-the-trainer to support IT/Advanced Manufacturing. (2) Provides up to \$2000 reimbursement to employers per credential through YSU Workforce programs. |
| Amplify – High School Scholarships/Support | ODE/Mahoning Educational Service Center (ESC) | NEW | \$100k | 5/2022 | 1 year | Provide up to \$40k in scholarships towards industry credentials that go towards high school graduation credits. Funding supports part-time academic advisor to support students in the YSU Skills Accelerator Programs. |
| Total New Awards | | | \$4.1M | | | |

Submitted Grant Proposals

| Project Name | Funding Partner | Status | Project Total | Contract Date | Performance Period | Description |
|--|-----------------|----------|---------------|---------------|--------------------|---|
| Appalachia Regional Commission (ARC) Power Grant | ARC | Proposed | \$1.25M | | 3 year | Grant to support 5G/Broadband training program for up to 165 participants in six counties including Mahoning, Trumbull, Ashtabula, Jefferson, Columbiana and Belmont. |

Submitted Awards

\$1.25M

Closed Awards

| Project Name | Funding Partner | Status | Project Total | Contract Close | Performance Period | Summary |
|--------------------------------|----------------------------|--------|---------------|----------------|--------------------|---|
| 5G Readiness Training Program | State of Ohio/OWT | Active | \$180K | 5/2022 | 1 year | UPDATE: 21 students enrolled; 10 students (YSU/MCCTC) graduated from the program. |
| Energy Storage Workforce Study | DOE/Oakridge National Labs | Active | \$750K | 11/2021 | 6 mo | National/regional energy storage workforce study to guide national training center concept. |

Quarterly Project Highlights

Mahoning Valley Workforce Partnership

- In collaboration with Chamber, YSU is convening a workforce coalition to help bring the workforce ecosystem together in new ways.
- Release of regional workforce and training provider guide

NSF Engine Grant

- Lead: Carnegie Mellon University. This initiative is designed to bring regions together to cultivate use-inspired research, development and workforce innovation. EMPOWER will address supply chain disruptions, struggles resulting from the pandemic and geopolitical uncertainties by using domestic manufacturing. Industries such as autonomous vehicles (AV) and advanced materials like polymer composites will be targeted. 10 year/160M implementation grant
- Lead: CWRU. for sustainable manufacturing. Planning grant., \$ TBD.

YSU Data Mine

- 12 YSU students enrolled and will receive up to 4 credits for participation in training and corporate sponsor
- 2 corporate cohorts – Nuvve and Central Insurance of Ohio

Academic Affairs Collaboration

YSU Data Mine

- 12 YSU students enrolled and will receive up to 4 credits for participation in training and corporate sponsor
- 2 corporate cohorts – Nuvve and Central Insurance of Ohio

Regional Research Project

- Google dashboard control – 4 students will be hired to help assess regional digital footprint and provide recommendations for elevating brand of the region

TechPrep

- State funded project to help expand CCP and ITAG pathways for high school students. Working closely with regional 4 years to expand programming for high school students.

University Learning Outcomes

- Partnering to help understand how credential programs align to university learning outcomes.

**Materials
To
Follow**

**Materials
To
Follow**