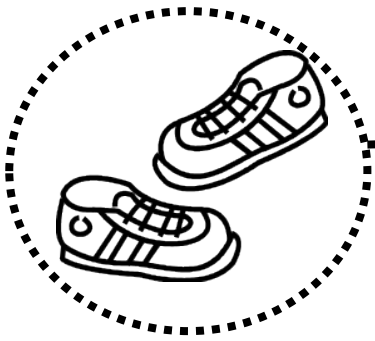


YSU Secure Wireless Connection Guide Windows 10

Required Items:

- Windows 10
- Any 802.11 a/g/n wireless radio supporting the **WPA2 Enterprise** authentication method and the **AES** encryption type
- A current supported anti-virus product
- Your YSU Directory Account (MyYSU) username and password

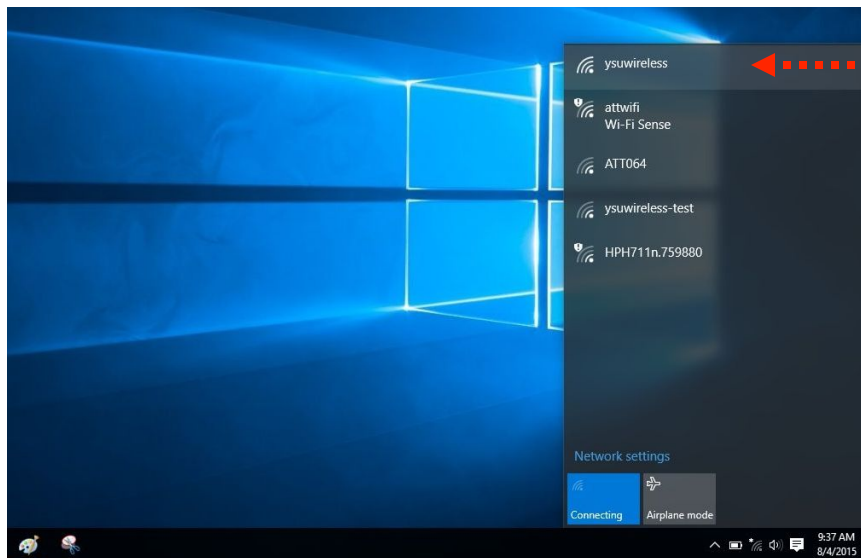


Step 1: Walk within range of the YSU Secure Wireless System.

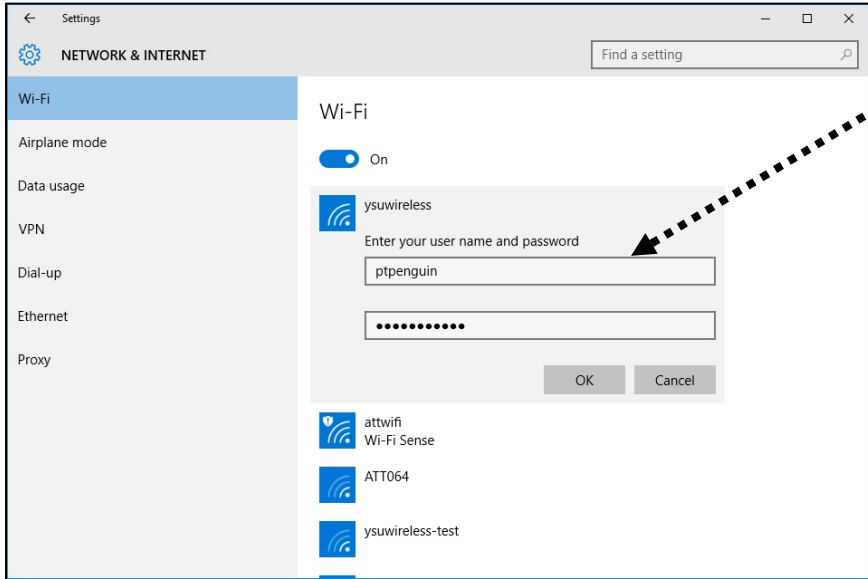
*Range is anywhere within approximately 100 feet of a wireless-enabled building. Range will vary with radio.



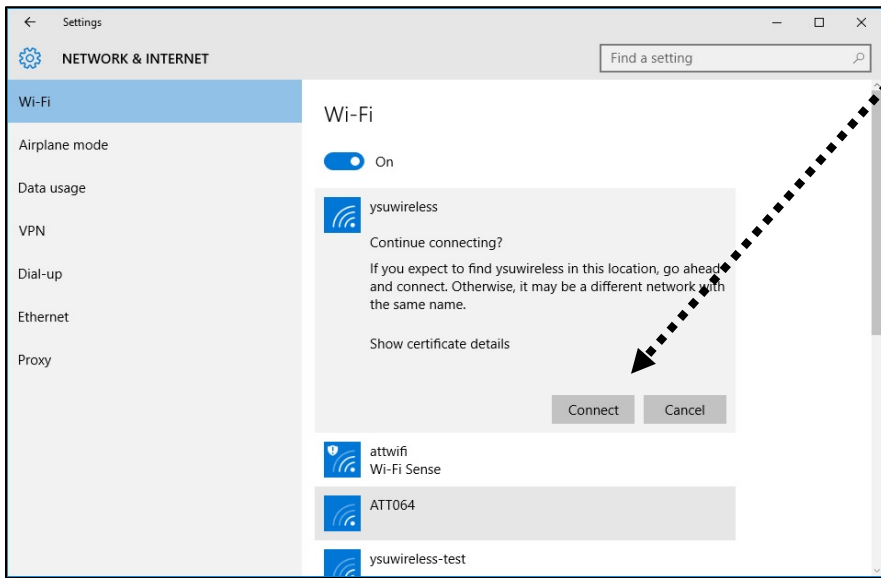
Step 2: From the Desktop, Click on the **Wi-Fi** icon.



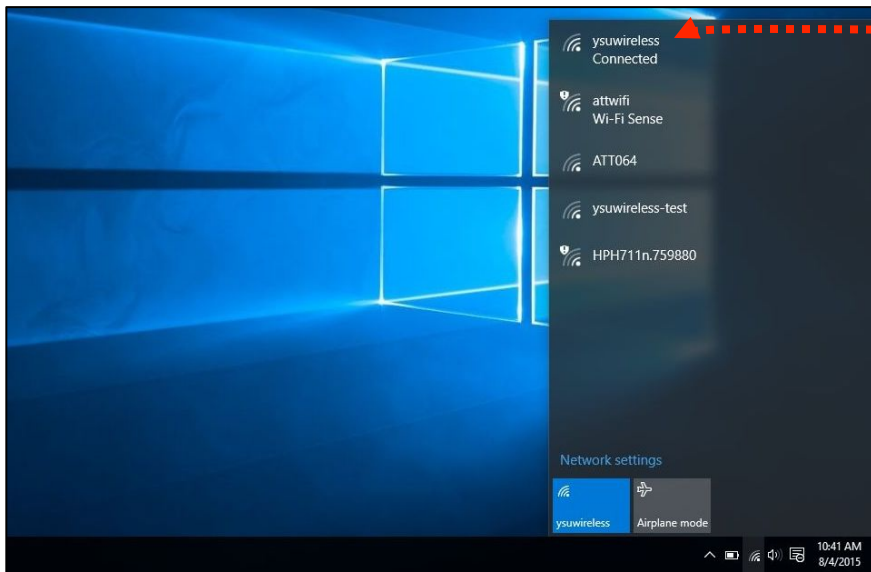
Step 3: Choose 'ysuwireless'.



Step 4: Enter your MyYSU username and password in the designated fields and then click “OK.”



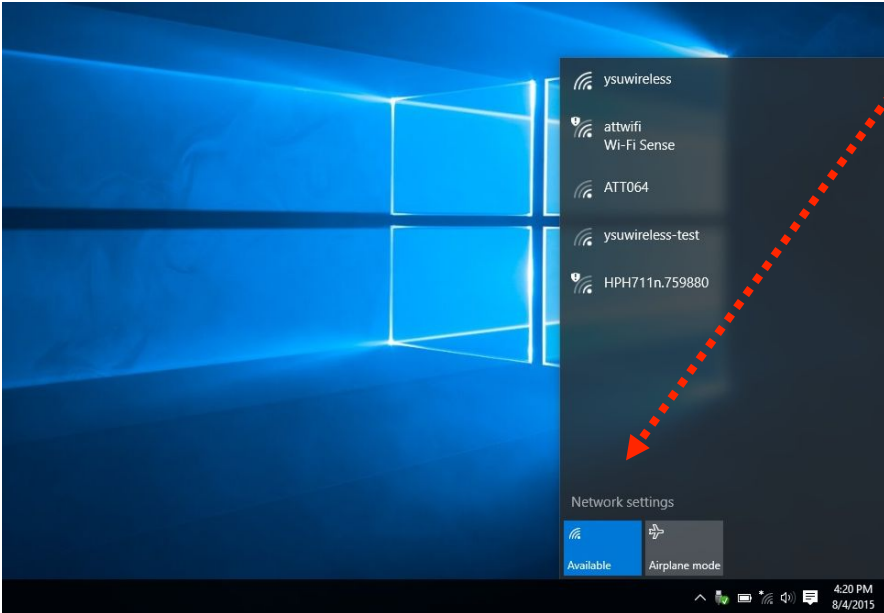
Step 5: When prompted click “Connect.”



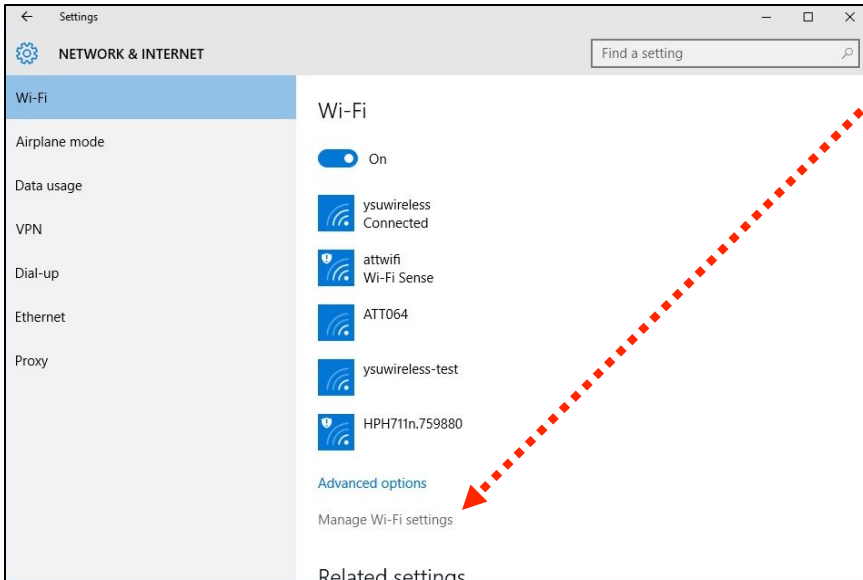
Step 6: Click on the **WiFi** icon and verify that 'ysuwireless' is **Connected**.

Troubleshooting Tips:

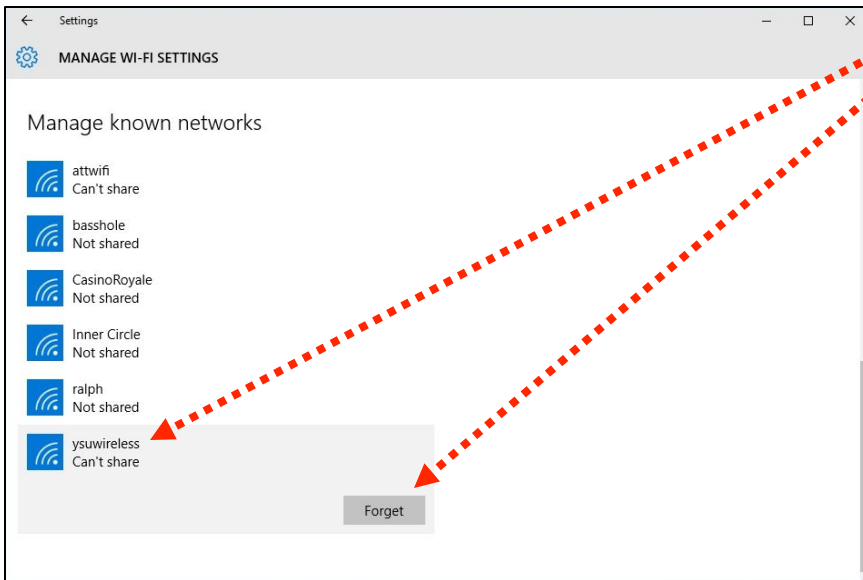
If unable to connect to *ysuwireless*, remove the *ysuwireless* profile and reconfigure it.



Step 1: Click on the **'Network Settings'** option.



Step 2: Click on the 'Manage Wi-Fi settings' option.



Step 3: Choose 'ysuwireless' and then click the 'Forget' button to remove the ysuwireless profile.

Step 4: Refer to Page #1, Step #1, and attempt to connect to ysuwireless.