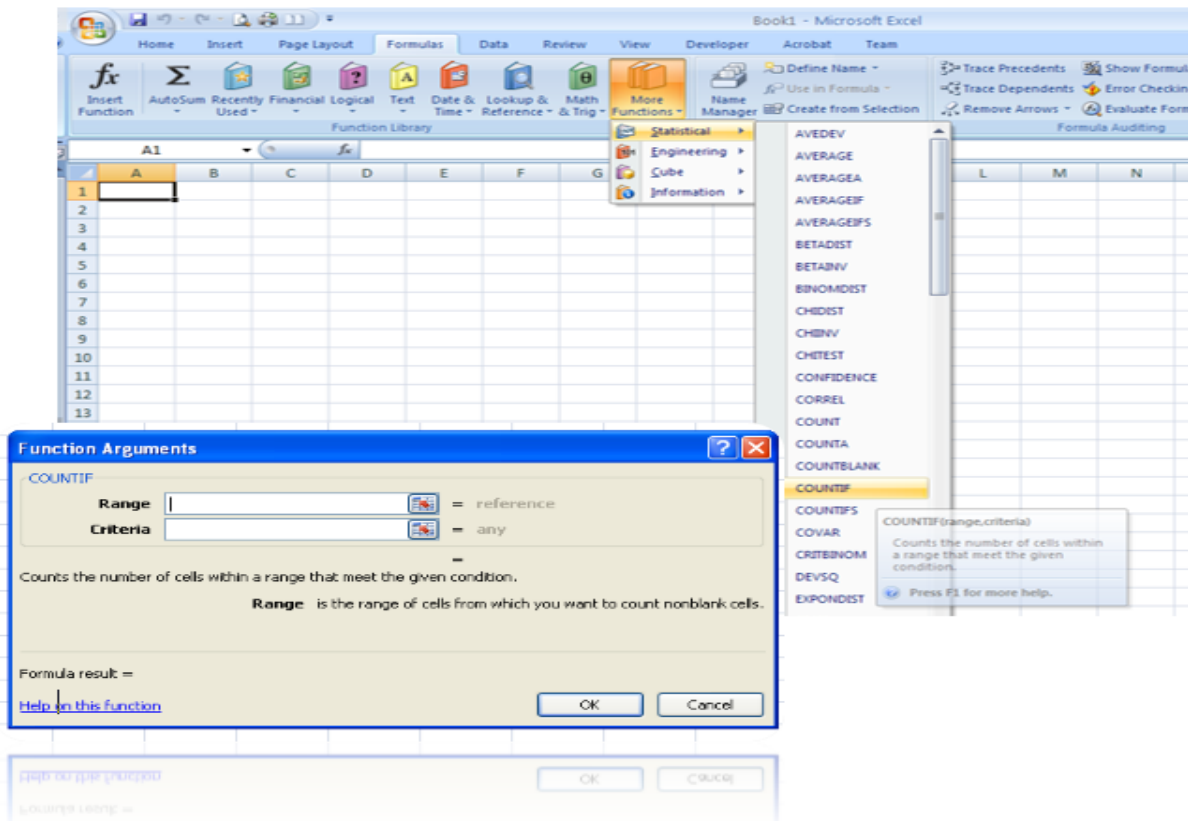


Using COUNTIF and COUNTIFS in Excel

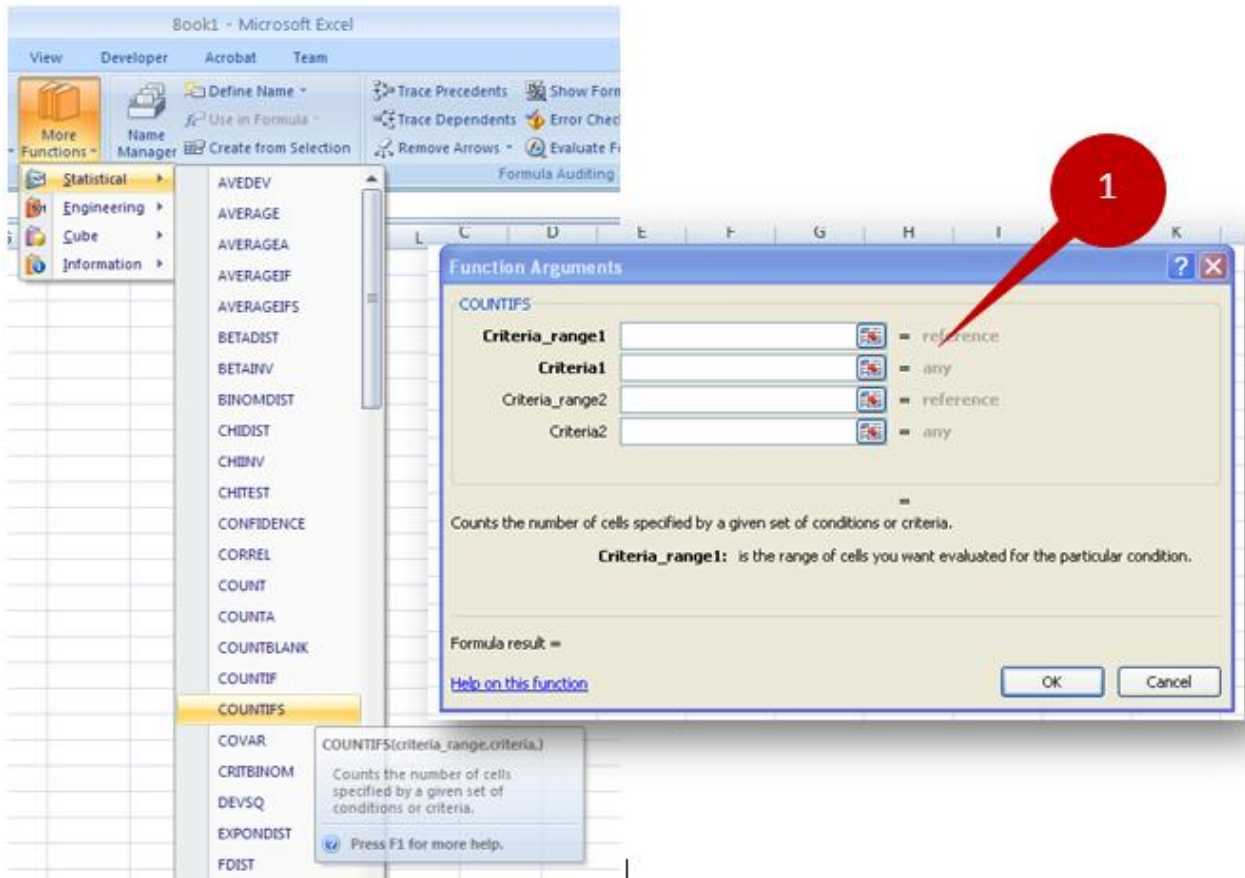
COUNTIF function counts the number of cells within a range that meet a *single* criterion that you specify. Example shown: How many *Criminal Justice Associates*? Or how many *Undetermined* (any – using a wildcard)?



Range and **Criteria** are required fields. **Range** represents one or more cells including named ranges. **Criteria** is a number, expression, cell reference or string text that defines which cells to count.

You can use **wild cards** ((?), (*)), type (~) before question mark or asterisk if you are looking for them. There is a 255 character limit to the matching criteria.

COUNTIFS function counts the number of cells within a range that meet a **number of** criterions that you specify. Example shown: How many *Criminal Justice Associates* who are also *Adults*?



The Function Arguments begin with just one range and criteria; however, once you have put in the first argument pair, a second argument box will become available.

ID	NAME	PHONE	ADULT
1	Ali	508-255-1211	No
2	Abdullah	508-255-1211	No
3	Abdullah	508-255-1211	No
4	Abdullah	508-255-1211	No
5	Abdullah	508-255-1211	No
6	Abdullah	508-255-1211	No
7	Abdullah	508-255-1211	No
8	Abdullah	508-255-1211	No
9	Abdullah	508-255-1211	No
10	Abdullah	508-255-1211	No
11	Abdullah	508-255-1211	No
12	Abdullah	508-255-1211	No
13	Abdullah	508-255-1211	No
14	Abdullah	508-255-1211	No
15	Abdullah	508-255-1211	No
16	Abdullah	508-255-1211	No
17	Abdullah	508-255-1211	No
18	Abdullah	508-255-1211	No
19	Abdullah	508-255-1211	No
20	Abdullah	508-255-1211	No

CountIF & CountIFS Examples	
Countif - Criminal Justice Associates	13
Countif - Undetermined (Wildcard)	63
Countifs - Criminal Justice and Adult	6

Examples

```
=COUNTIF(I2:I394,I12)
=COUNTIF(I2:I393,"=Undetermined *")
=COUNTIFS(I2:I393,I11,J2:J393,"=yes")
```