

**BOARD OF TRUSTEES  
FINANCE AND FACILITIES COMMITTEE**

**Leonard D. Schiavone, Chair**  
**Delores E. Crawford, Vice Chair**  
**All Trustees are Members**  
**Randy J. Dunn, *Ex-Officio***

**BACKGROUND MATERIALS  
Thursday, February 20, 2014**

- |   |              |
|---|--------------|
| <b>1. Fiscal Year 2014 Second Quarter Comparison of Budget to Actual for the General Operating Fund</b>   | <b>Tab 1</b> |
| <b>2. Budget and Interfund Transfers for the Quarter Ending December 31, 2013, Reportable under Policy Number 3010.01, Budget Transfers, of the <i>University Guidebook</i></b>   | <b>Tab 2</b> |
| <b>3. Report on Endowment Funds as of December 31, 2013</b>   | <b>Tab 3</b> |
| <b>4. Technology Master Plan Update</b><br>Progress to date on major technology initiatives, as defined in the Technology Master Plan, is summarized for the areas of Computer Services, ITS Operations, Media and Academic Computing Services, and Network Security. | <b>Tab 4</b> |

**BACKGROUND MATERIALS:**  
Finance and Facilities Committee

**TAB 1:** Fiscal Year 2014 First Quarter Comparison of Budget to Actual for the General Operating Fund

**STAFF CONTACT:** Neal McNally, Director of Budget Planning and Treasury Operations

**HIGHLIGHTS OR ISSUES:**

- Overall expenses and transfers are on target and revenues are below budgeted targets.
- The University has developed a plan to meet revenue shortfall, which focuses primarily on reducing expenses.
- The largest category of revenues – tuition and mandatory fees are below levels.
- Although combined expenses and transfers are below prior year expenses and on target, the largest category of expense, wages and benefits, were slightly above targeted levels, largely due to a relatively high number of medical claims exceeding \$100,000 during the first half of 2014.

**TAB 2:** Budget and Interfund Transfers for the Quarter Ending December 31, 2013 Reportable under Policy Number 3010.01, Budget Transfers, of the *University Guidebook*

**STAFF CONTACT:** Katrena Davidson, Controller

**HIGHLIGHTS OR ISSUES:**

- Required to report transfers of \$25,000 or more.
- A total of ten transfers, of which four are for capital projects and two as part of FY2014 budget contingency plan.
- \$50,000 additional funding for marketing initiatives.

**TAB 3:** Report on Endowment Funds as of December 31, 2013

**STAFF CONTACT:** Katrena Davidson, Controller

**HIGHLIGHTS OR ISSUES:**

- The Endowment Fund Report provides a synopsis of individual fund restrictions as well as principal and spending balances for all YSU Endowment Funds.
- The 89 funds provide various support including awards, program support, and scholarships and had a total principal balance of \$7.5 million and a spending balance in excess of \$900,000 at December 31, 2013.

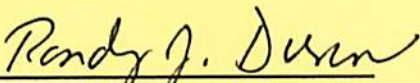
**TAB 4: Technology Master Plan Update**

**STAFF CONTACT:** Ken Schindler, Associate Vice President and Chief Technology Officer

**HIGHLIGHTS OR ISSUES:**

- Several major projects are nearing completion, the most visible to users will be:
  - Password Change Management
  - Single Network Architecture
  - Classroom Technology Upgrades in 11 classrooms
  - A Unified Campus Calendar system
  
- Continuing refinement of the Business Intelligence database and reporting. Current focus is on data quality and missing data.

**REVIEWED:**

---

Randy J. Dunn, President

**YOUNGSTOWN STATE UNIVERSITY**  
**Budget to Actual Comparison**  
**For the 6-month period of 7/1/13-12/31/13**

Overall, actual general fund revenues are below budgeted target while expenses and transfers remain on target.

- Tuition and mandatory fees as a percentage of the annual budget was 89.3%, lower than expected. This is attributable to a fall semester enrollment drop of 3.2% on an FTE basis, which is expected to continue into a spring semester. The University has developed a plan to meet this revenue shortfall, which focuses primarily on reducing expenses related to everything from energy consumption to personnel costs.
- Other tuition and fees include non-resident surcharges, lab and material fees, college fees, graduation fees, and application fees. These fees as a percentage of the budget totaled 87.0% at the end of the second quarter.
- State appropriations were below target for the second quarter. However, the Ohio Board of Regents finalized the State Share of Instruction (SSI) calculations in December, which should result in marginally higher SSI disbursements for the third and fourth quarters.
- Investment income, consisting of realized net gains and interest income, was 119.6% of the annual budget, higher than expected. This is due in part to market performance, a change in internal practices for disbursing investment income, and the University reducing its reliance on investment income as a budgeted revenue source.
- Recovery of indirect costs was 40.4% of the annual budget, below targeted levels. This is due primarily to a decrease in federal grant activity. Although revenues are below expected levels, spending is limited to actual revenue.
- At 77.9% of the annual budget, combined revenues through the second quarter are below budgeted targets. A caution indicator was assigned due to two main factors: (1) the largest category of revenues—tuition and mandatory fees—are below target, as described above; and (2) concerns persist over future enrollment levels, the primary driver of revenues.
- At 53.9% of the annual budget, combined expenses and transfers for the second quarter are below prior year expenses but remain on target.
- The largest categories of expenses—wages and benefits—were slightly above targeted levels but generally on target. A caution indicator was assigned to benefits due to a relatively high number of medical claims exceeding \$100,000 during the first half of fiscal year 2014.

**YOUNGSTOWN STATE UNIVERSITY**  
**Budget to Actual**  
**For the 6-month period of 7/1/13 - 12/31/13**

FY2014 Revenue 2nd Quarter, 12/31/13	Fiscal Year 2014		Actual as a % of Budget	Business Indicator	FY13 actual compared to FY12 actual
	Budget	Actual			
Tuition and mandatory fees	\$101,300,120	\$90,511,052	89.3%	●	↓
Other tuition and fees	8,679,520	7,547,935	87.0%	●	↑
Student charges	1,288,000	816,537	63.4%	●	↑
State appropriations	38,889,094	18,629,670	47.9%	●	↓
Recovery of indirect costs	1,984,266	801,806	40.4%	●	↓
Investment income	700,000	836,862	119.6%	●	↑
Other income	859,000	579,358	67.4%	●	↑
<b>Total</b>	<b>\$153,700,000</b>	<b>\$119,723,220</b>	<b>77.9%</b>	<b>●</b>	<b>↓</b>

● On/Above target

● Caution

● Warning

FY2014 Expenses 2nd Quarter, 12/31/13	Fiscal Year 2014		Actual as a % of Budget	Business Indicator	FY13 actual compared to FY12 actual
	Budget	Actual			
Wages	\$80,437,338	\$39,176,410	48.7%	●	↑
Benefits	25,518,707	14,624,996	57.3%	●	↓
Scholarships	4,627,074	590,270	12.8%	●	↓
Operations	15,609,358	5,570,217	35.7%	●	↑
Plant & maintenance	8,379,664	4,133,780	49.3%	●	↑
Fixed asset purchases	559,949	204,263	36.5%	●	↑
Transfers	18,699,468	18,615,847	99.6%	●	↓
<b>Total</b>	<b>\$153,831,558</b>	<b>\$82,915,783</b>	<b>53.9%</b>	<b>●</b>	<b>↓</b>

● On/Below target

● Caution

● Warning



**YOUNGSTOWN STATE UNIVERSITY**  
**Reportable Budget and Interfund Transfers**  
**Quarter Ended December 31, 2013**

**BUDGET TRANSFERS WITHIN THE OPERATING BUDGET (i.e., General Fund and Auxiliaries):**

FROM	TO	AMOUNT	REASON
------	----	--------	--------

None.

**TRANSFERS OUTSIDE OF THE OPERATING BUDGET:**

FROM	TO	AMOUNT	REASON
------	----	--------	--------

Technology Master Plan (Designated Fund)	General Fund	\$750,000	Approved by Board in December.
Housing Services Plant Reserve (Auxiliary Plant Fund)	Cafaro House HVAC (Auxiliary Plant Fund)	\$175,000	Transfer for replacement of the Cafaro House chiller and cooling tower.
West of Fifth Supplemental Gifts - Gift Fund (Restricted Plant Fund)	West of Fifth Supplemental Projects - Gift Fund (Restricted Plant Fund)	\$151,870	Transfer to project fund for West of Fifth Complex storage building.
Applied Music (Designated Fund)	Program Fees (General Fund)	\$86,000	Move original transfer to appropriate fund.
Chartwells Food Service Facility (Restricted Plant Fund)	Sodexho Food Serv Facility Fund (Restricted Plant Fund)	\$65,382	Transfer to close out Sodexho contract.
Housing Services Plant Reserve (Auxiliary Plant Fund)	Wick & Weller House HVAC (Auxiliary Plant Fund)	\$60,000	Transfer for replacement of the Wick and Weller House chiller.
West of Fifth Supplemental Gifts - Gift Fund (Restricted Plant Fund)	West of Fifth Supplemental Projects - Gift Fund (Restricted Plant Fund)	\$50,075	Transfer to project fund for additional construction costs.
Property Acquisition Fund (Unrestricted Plant Fund)	Recruitment and Advertising (Designated Fund)	\$50,000	Transfer to fund marketing and advertising blitz.
Centers of Excellence (Designated Fund)	General Fund	\$42,500	Transfer as part of FY2014 budget contingency plan.

**TRANSFERS OUTSIDE OF THE OPERATING BUDGET:**

<b>FROM</b>	<b>TO</b>	<b>AMOUNT</b>	<b>REASON</b>
General Fund	SBDC Federal Match (13-14) (Restricted Fund)	\$41,870	Transfer to fund required match.

**YOUNGSTOWN STATE UNIVERSITY**  
**Endowment Fund Report as of December 31, 2013**

COLLEGE or AREA	GENERAL PURPOSE	ENDOWMENT FUND - RESTRICTION	ENDOWMENT FUND BALANCE FAIR VALUE	AVAILABLE RESTRICTED FUNDS
<i>Awards</i>				
CLASS	Award	<b>Candace Gay Memorial Awards</b> Junior and senior high school student who exhibits distinctive writing ability and to provide a stipend to the annual author-lecturer at the YSU English Festival. Two \$100 awards.	\$199,382	\$3,270
Student Affairs - Financial Aid CLASS	Award	<b>Charles E. and Mary E. Franklin Fund</b> Student research award.	2,171	2,497
CLASS	Award	<b>Charles W Baird Memorial (Honors Day)</b> Award to be made each Honors day to student showing excellence in English.	14,962	602
CLASS	Award	<b>Clingan Jackson</b> Political Science.	5,482	170
CLASS	Award	<b>David Scott Ives Memorial Endowment</b> To recognize achievement in classical languages at the advanced level.	6,989	243
CLASS	Award	<b>Gary L Green Award</b> English major with 48-107 hours who has done outstanding work in English 3700 and otherwise shown strong academic promise. Annual award of \$300.	56,322	1,798
CHHS	Award	<b>Ilajejan Feldmiller</b> Home Economics scholarship. \$400 award.	15,918	1,152
FPA	Award	<b>Joseph Salvatore (Honors Day)</b> Student majoring in studio art or art history with a 2.5 GPA. The award will be given at the Honors Convocation.	12,277	3,743
STEM	Award	<b>Kenmore B Drake Memorial Award (Honors Day)</b> Must be at least a junior by fall with 2.5 GPA, show leadership, and demonstrate commitment and enthusiasm for teaching business education. Must be preparing for certification in business education comprehensive, vocational business education comprehensive, bookkeeping and basic business or stenography. Award will be made during the Honors Convocation.	9,313	1,425
CHHS	Award	<b>Margaret C Horvath Scholarship Endowment</b> Travel money for Human Ecology students attending professional meetings outside Mahoning County. Preference given to students who are presenting at the meeting.	3,688	121
CLASS	Award	<b>Marium Blum Graduate History Award</b> Provide a \$50 bond for a graduate history essay award.	3,582	2,619
WCBA	Award	<b>Mary B Smith</b> Full-time, non-traditional, female who has completed at least 45 hours and at maximum 145 hours with a minimum GPA of 2.5 and is currently enrolled.	11,976	1,632
STEM	Award	<b>Nicola &amp; Rocchina Richley Memorial Award</b> Sophomore Engineering or Engineering Technology major who has demonstrated academic excellence and is committed to program completion. Must have completed at least one term of the sophomore year with a minimum 3.0 GPA. Annual award given on alternate years.	16,470	1,292
CLASS	Award	<b>Robert R Hare Writing Award (Honors Day)</b> Two awards. Recipient for Journalistic Writing should be a full-time student at YSU who has demonstrated distinction in journalistic writing. Recipient for Distinction in Creative and Critical Writing should be an English major at YSU who has demonstrated distinction in creative or critical writing or both. Each award \$250, \$500 annually. Declining principal.	24,988	839
CLASS	Award	<b>Sister Jean Gillespie Memorial Award (Honors Day)</b> Outstanding senior in religious studies whose academic program best exhibits an interest in comparative religion.	7,707	903



**YOUNGSTOWN STATE UNIVERSITY**  
**Endowment Fund Report as of December 31, 2013**

COLLEGE or AREA	GENERAL PURPOSE	ENDOWMENT FUND - RESTRICTION	ENDOWMENT FUND BALANCE FAIR VALUE	AVAILABLE RESTRICTED FUNDS
<i>Program Support</i>				
CLASS	Programs	<b>Albert J Shipka Memorial Speakers Fund</b> For Dept. of Philosophy & Religious Studies to sponsor speakers, conferences, workshops, seminars and newsletters.	512,699	21,847
CLASS	Programs	<b>Alice Budge Peace Speakers Fund</b> To support speakers on peace and justice issues	12,588	6,114
Public Service Institute	Programs	<b>Bertram Tamarkin</b> Fund operations for the Center for Human Services.	19,767	0
University Advancement -	Programs	<b>Campus Beautification</b> To provide support for maintaining trees and planters.	27,090	109,023
Academic Administration	Programs	<b>Dr. and Mrs. F.F. Piercy Book Fund</b> Annual book purchases for Library.	21,710	7,568
CLASS	Programs	<b>Dr. James Dale Ethics Center</b> For exclusive use of the Ethics Center. Funds used to enhance the activities and programs of the Ethics Center.	469,499	3,372
Academic Administration	Programs	<b>Edward J DeBartolo Fund</b> Devoted exclusively to funding activities related to updating the University's curriculum.	651,507	191,128
Student Life	Programs	<b>Ethel M Wood Epilepsy Foundation Fund</b> Fund graduate assistantship to provide guidance and counseling services to handicapped students, particularly those afflicted with any form of epilepsy.	192,688	10,907
CLASS	Programs	<b>Gratia Murphy Speaker Fund</b> Interest income from this endowment will be used for expenses associated with the Poetry Center activities.	47,050	6,503
CLASS	Programs	<b>James A Houck English Festival</b> Funds used to support designated programs, contests, and student awards associated with the YSU English Festival. Maximum amount available for use each year shall be the amount of interest earned by the fund in the previous year.	25,880	674
CLASS	Programs	<b>Judaic &amp; Holocaust Fund</b> To maintain and promote present and future Judaic & Holocaust courses. Sum up to \$500 can be set aside for annual advertising expenses.	288,657	53,674
WCBA	Programs	<b>Michael I Monus Professor Entrepreneurship</b> Development of the entrepreneurship program.	689,706	23,866
CLASS	Programs	<b>Morris &amp; Sophie Slavin Fund</b> For the Department of History to bring to the campus recognized scholars in the field of history.	27,716	16,552
CLASS	Programs	<b>Muses Fund</b> Provide support to YSU Poetry Center annually. Poetry Center will include the name of the endowment in its program, publications and announcements.	20,797	964
STEM	Programs	<b>R H Weichsel</b> Instruction and faculty research and professional development in area of plane bearing technology.	3,732	2,890
Academic Administration	Programs	<b>Richard James Owen II</b> Use to purchase books, manuscripts, subscriptions for MAAG Library.	2,171	10,148
University Advancement - WYSU	Programs	<b>Robert Coe (WYSU-FM Fund)</b> Support of WYSU-FM in the broadcast of classical music.	175,663	77,341
Academic Administration	Programs	<b>The Beckman Memorial Collection</b> Buy books for MAAG library. Titles purchased will be in the fields of literature, music & engineering.	103,429	33,447
CLASS	Programs	<b>Thomas &amp; Carol Gay English Festival Lecture Fund</b> To provide the services of the YSU English Festival's annual featured author-speaker.	302,328	4,958

**YOUNGSTOWN STATE UNIVERSITY**  
**Endowment Fund Report as of December 31, 2013**

COLLEGE or AREA	GENERAL PURPOSE	ENDOWMENT FUND - RESTRICTION	ENDOWMENT FUND BALANCE FAIR VALUE	AVAILABLE RESTRICTED FUNDS
<i>Program Support, continued</i>				
CLASS	Programs	<b>English Festival</b> Support the objectives of the YSU English Festival.	76,998	1,534
<i>Scholarships</i>				
STEM	Scholarships	<b>Adlaka &amp; Associates Scholarship</b> Five \$200 scholarships, three for senior civil or structural engineering and two for computer technology. Recipient shall be son or daughter coming from a family where the head of household is presently unemployed.	35,641	2,191
STEM	Scholarships	<b>Albert A Guerrieri, Jr. Memorial Scholarship</b> Graduating senior of Wilson high school, must have a 3.0 GPA and an ACT of 22 or SAT of 900 and major in either science education or pre-med.	21,141	1,004
Student Affairs - Financial Aid	Scholarships	<b>Ann &amp; Jerome Schmerin Scholarship</b> Full or part-time students with a 2.5 GPA demonstrating financial need. Scholarship renewable.	16,321	4,040
Student Affairs - Financial Aid	Scholarships	<b>Bernadine Marinelli Memorial Scholarship</b> Scholarships awarded on academic achievement or financial need.	55,841	4,862
Student Affairs - Financial Aid	Scholarships	<b>Betty J Connors Memorial Award</b> Non-traditional full or part-time woman who's completed 45 quarter hours with at least a 3.2 GPA. Must be an English major. Annual award of \$300.	22,359	4,170
Athletics	Scholarships	<b>Bill Dailey Scholarship</b> Former member of the YSU Intercollegiate Basketball Team to continue and/or complete undergraduate studies.	16,091	424
Student Affairs - Financial Aid	Scholarships	<b>Brier Hill Scholarship</b> Descendants of Briar Hill with a 2.8 GPA. Must be non-traditional student with Junior rank or higher.	23,122	488
CLASS	Scholarships	<b>Dorothy Z Greenberger Memorial Scholarship Fund</b> Annual scholarship grant to a needy student or students with academic ability majoring in Arts and Sciences.	20,490	1,696
EDUC	Scholarships	<b>Dr. Gunapala Edirisooriya Scholarship</b> Beeghly College of Education Majors.	12,075	391
EDUC	Scholarships	<b>Dr. Phillip Ginnetti Memorial Scholarship</b> Beeghly College of Education Majors.	11,823	383
FPA	Scholarships	<b>DUSI Memorial Scholarship Fund</b> Scholarships for worthy music students.	115,523	5,074
STEM	Scholarships	<b>Edmund J Salata Memorial Scholarship</b> Civil engineering student with a 3.0 GPA.	11,655	555
FPA	Scholarships	<b>Elaine Glasser Memorial Art Education Scholarship</b> Junior or senior art education major showing financial need with a 3.0 GPA. Recipient must teach at least two years in the first five years after graduating or must repay the scholarship amount.	17,301	2,164
FPA	Scholarships	<b>Esotto &amp; Vera Pellegrini</b> For music students based on outstanding ability or potential for excellence in field of brass playing. Must be a full-time student, maintain a 3.0 GPA and be a member of a major ensemble. Will be selected through an audition before brass faculty and director of Dana School of Music.	39,640	1,972
WCBA	Scholarships	<b>Eugene Green Memorial Scholarship</b> Two equal scholarships would be awarded yearly on the basis of the annual earnings. Recipient must be a Labor Studies Program major, a member of a trade union and show academic promise.	60,752	23,740

**YOUNGSTOWN STATE UNIVERSITY**  
**Endowment Fund Report as of December 31, 2013**

COLLEGE or AREA	GENERAL PURPOSE	ENDOWMENT FUND - RESTRICTION	ENDOWMENT FUND BALANCE FAIR VALUE	AVAILABLE RESTRICTED FUNDS
<i>Scholarships, continued</i>				
STEM	Scholarships	<b>Ferdinand Jagatich Scholarship</b> Student majoring in math, physics or engineering and demonstrating financial need. Full-time with a 2.5 GPA. If part-time, students must maintain employment to be eligible. Scholarship renewable	26,225	1,563
BCOE	Scholarships	<b>Florence Amon Scholarship Fund</b> Full or part-time student majoring in Education with a 3.0 GPA and demonstrating financial need	18,321	4,752
STEM	Scholarships	<b>Frank M Clark</b> Students majoring within the department of Physics & Astronomy. Awarded on basis of achievement and need. Amount and date will be decided by the department. Any residue may be used to purchase equipment for student or faculty research.	27,494	1,344
STEM	Scholarships	<b>Gerhard M Stein Electrical Engineering</b> Electrical engineering student	4,882	294
Student Affairs - Financial Aid	Scholarships	<b>Gina Tenney Memorial</b> One \$400 annual scholarship to a sophomore that qualifies for the Dean's list with a major in Arts or Humanities and is active in campus activities.	12,698	8,336
WCBA	Scholarships	<b>Grocery Manufacturers Rep's of Youngstown (GMRY)</b> School of Business student whose parents work in the Youngstown area grocery business if possible.	5,428	2,270
Athletics	Scholarships	<b>Harry K Graebing Athletic Scholarship Fund</b> Provide scholarships or other forms of financial assistance to deserving students of the University, and that awards be made only to deserving students who may be participants in University athletics and are residents of either Ohio or Pennsylvania.	32,544	858
BCOE	Scholarships	<b>Harvey Neal Kretzer Memorial Scholarship</b> Scholarship for School of Education master's candidate in school counseling and/or related pupil personnel services with a demonstrated interest in pursuing career with disadvantaged students. If no worthy recipient is available, scholarship may be awarded to undergraduate student pursuing a career in teaching with a demonstrated interest in disadvantaged students. All awards based upon scholarship and need.	83,462	5,502
BCOE	Scholarships	<b>Helen Edward Stoll</b> Students majoring in Education with interest in the learning disabled with a 2.5 GPA and resident of Mahoning County.	30,410	6,561
FPA	Scholarships	<b>Helen Goering Schmitt Music Trust</b> Scholarships for students in the Dana School of Music.	6,513	454
STEM	Scholarships	<b>Herta Jackson Memorial Scholarship</b> Needy engineering students.	400,766	60,714
Student Affairs - Financial Aid	Scholarships	<b>Honorable Erskine Maiden Jr. Scholarship</b> Student who is a resident of Mahoning County and demonstrates financial need as determined by the FAFSA.	527,758	27,408
WCBA	Scholarships	<b>JAD Scholarship Fund</b> Full-time student in good standing with 2.5 GPA demonstrating financial need. One annual scholarship.	122,301	16,441
Student Affairs - Financial Aid	Scholarships	<b>John and Lucille Fedor</b> Scholarships for worthy students.	676,282	0
CLASS	Scholarships	<b>Julia Spitzer</b> Jewish students who show financial need.	30,988	4,908
Student Affairs - Financial Aid	Scholarships	<b>Louis D Tauro Scholarship</b> Entering freshman based on financial need and high school academic achievement. Must maintain a 3.0 GPA or higher. The donor may nominate recipients. Renewable for four years.	103,724	11,970
CHHS	Scholarships	<b>Mary E Pinney Nursing Scholarship</b> Assist students working toward an Associate in Applied Science degree with the goal of becoming a registered nurse. Applicants must be residents of Ohio or Pennsylvania.	32,564	1,917

**YOUNGSTOWN STATE UNIVERSITY**  
**Endowment Fund Report as of December 31, 2013**

COLLEGE or AREA	GENERAL PURPOSE	ENDOWMENT FUND - RESTRICTION	ENDOWMENT FUND BALANCE FAIR VALUE	AVAILABLE RESTRICTED FUNDS
<i>Scholarships, continued</i>				
FPA	Scholarships	<b>Mary P Rigo Memorial Scholarship</b> YSU student(s) who have completed 95 hours, must be a music major with emphasis in keyboard instruments, restricted to students who are residents of Mahoning County. Scholarship not to exceed \$500 each for one or more students.	24,804	1,343
STEM	Scholarships	<b>Michael A Rigo Memorial Scholarship</b> YSU student(s) who have completed 95 hours, award restricted to Mechanical Engineering student(s) who are residents of Mahoning County. Scholarship not to exceed \$500 each for one or more students.	24,804	1,311
CLASS	Scholarships	<b>Michael Klasvosky Geography Award</b> Geography students selected by geography department.	21,067	743
CLASS	Scholarships	<b>Michael Klasvosky Urban Studies Scholarship</b> Students majoring in geography who are employed in the department of Urban Studies.	9,708	782
Student Affairs - Financial Aid	Scholarships	<b>Mildred N Graebing Business Education &amp; Technology Scholarship Fund</b> Annual awards to deserving students who are enrolled as full-time students in degree courses in business education and secretarial studies.	32,564	13,807
CLASS	Scholarships	<b>Myron C Wick, Jr.</b> Three academic scholarships, two in the physical sciences and one in engineering.	201,900	11,477
FPA	Scholarships	<b>Nelli P Nick Scholarship Fund</b> Provide scholarships or other forms of financial assistance to deserving students of the University; and that awards be made only to women students who may be enrolled in the Dana School of Music.	10,855	653
WCBA	Scholarships	<b>Peter George Parthemos</b> One year scholarship in the Business School of YSU. Recipient to be from Greece or of Greek descent; with a B average either in high school or as a student in YSU. For scholarship to be renewed, student must maintain a B average.	67,004	10,882
STEM	Scholarships	<b>Reel &amp; Fabek Memorial Scholarship</b> Sophomore or higher status, with financial need and in good standing majoring in electrical engineering.	20,167	938
Student Affairs - Financial Aid	Scholarships	<b>Ronald Barnes and Emily Parker Mackall Scholarship</b> Junior or senior with 2.8 GPA. Student must have completed one year of basic economic principles and one year of fine arts classes. Available to students in the 5 county area as well as Beaver County, PA.	62,043	7,172
CHHS	Scholarships	<b>Roseann Waindel Memorial Nursing FD</b> Nursing scholarship. Evidence of financial need with a 3.0 GPA. Must have an interest in a career as an ER-trauma nurse.	21,541	1,381
CHHS	Scholarships	<b>Theodore &amp; Evelyn Chengelis Memorial (Honors Day)</b> Student of Hellenic heritage who will matriculate to medical school. Recipient will be selected by the Chengelis family of Boston and the award will be given at the Honors Convocation.	26,953	861
Student Affairs - Financial Aid	Scholarships	<b>Thomas Fabek &amp; Peter Fabek Scholarship Endowment</b> An orphan or foster child from Youngstown with 2.5 or higher GPA. If candidate from Youngstown doesn't qualify, a candidate may come from another city in Mahoning County. Scholarship is renewable for recipient that maintains a 2.5 GPA. Catholic Services or Mahoning Juvenile Dept. may suggest candidate.	22,384	1,292

**YOUNGSTOWN STATE UNIVERSITY**  
**Endowment Fund Report as of December 31, 2013**

COLLEGE or AREA	GENERAL PURPOSE	ENDOWMENT FUND - RESTRICTION	ENDOWMENT FUND BALANCE FAIR VALUE	AVAILABLE RESTRICTED FUNDS
<i>Scholarships, continued</i>				
Student Affairs - Financial Aid	Scholarships	<b>UAW Local 1112-BOC Lordstown Scholarship Fund</b> Spouses and dependents of UAW Local 1112 and full-time salaried employees of BOC Lordstown Assembly plant. Employees must have been affiliated with the union and/or assembly plant for more than one year. Full-time sophomore to senior status with a 2.5 GPA. Students receiving other financial aid, including G.I. Bill are not eligible. Students with loans may apply.	41,752	26,964
STEM	Scholarships	<b>Virgil A Hobart Scholarship</b> Worthy engineering student based on need or merit. One award per year, \$1,000 maximum amount.	21,164	973
WCBA	Scholarships	<b>William Petrych Memorial Scholarship</b> Junior or senior majoring in accounting with a 3.2 GPA and displaying financial need. Scholarship is renewable each year until student graduates. One or two scholarships annually.	209,239	10,456
Student Affairs - Financial Aid	Scholarships	<b>YSU General Fund</b> Assist the financial needs of advanced education.	812	0
FPA	Scholarships	<b>Robert E. Fleming Memorial Scholarship</b> Students accepted into the Dana School of Music. First choice to school districts within the Mahoning Valley.	10,967	663
FPA	Scholarships	<b>Albert D. Caldron Memorial Scholarship Endowment</b> Students accepted into the Dana School of Music, majoring in clarinet, saxophone, flute performance or music education.	10,815	374
	Scholarships	<b>APAS Scholarship Endowment</b> First priority given to an APAS dependent. Must have completed 12 semester hours at YSU and be enrolled full-time.	5,107	50
WCBA	Scholarships	<b>Robert C. &amp; Janice Machin Endowment</b> Dean's discretion for Student Study Abroad Program based on criteria.	25,068	110
WCBA	Scholarships	<b>Mark E. Moore Memorial Scholarship</b> Students pursuing a BSBA at Williamson College of Business Administration. Must be a Boardman high school graduate.	10,546	199
<b>Totals December 31, 2013</b>			<b>\$7,566,300</b>	<b>\$905,692</b>
<b>Totals December 31, 2012</b>			<b>\$6,400,807</b>	<b>\$871,676</b>

***Youngstown State University***  
***Information Technology***  
***Master Plan***

**March 2014 Update**

**Computer Services – R. Marsico**

Project highlights include the following:

- The Business Intelligence team continues to identify and resolve data issues associated with the pilot project as defined by Vice President Grilli. The first iteration of the data was delivered in mid-January and included college and department costs per credit. Future extracts will include refinements to instructor workload data.
- Work continues on the conversion of the HEI Microsoft Access database to a Banner data warehouse solution. For purposes of reporting, the Institutional Research & Analytics staff is undertaking the process of retrieving HEI datasets, previously submitted to the state, and adding these to the warehouse.
- The FMLA-specific features of Banner were implemented for bi-weekly employees eliminating the need to manually track leave hours. Banner system integration will allow for more accurate and timely data calculations while incorporating future modifications to the Family Medical Leave Act.
- Historical reporting capabilities were expanded for admissions data through the capturing of additional detail associated with application entry and change processing. This was accomplished through the development of custom features beyond those delivered by the base Banner system.
- The Starfish data adapter was successfully upgraded to the currently available version extending the data capture and reporting capabilities of the retention solution. Enhancements include the ability for Starfish to display photos of students participating in the advisement process.
- As a result of an effort independent to the Starfish upgrade, faculty and advisors are now able to access student images directly through documents specific to Self-Service Banner.
- A unified campus calendar was implemented providing a visually appealing central location for students, faculty, staff, and the public to easily view events scheduled at YSU. In addition to its high visibility, the newly implemented calendar provides the University Police with a single source of data pertaining to all campus events. This project was achieved through a multi-phased approach with one of the most significant being the capturing of all event data directly into Banner. Extensive setup was necessary to facilitate data entry by the Rec Center, Planetarium, and College of Creative Arts and Communication.

- In an effort to reduce University bad debt, it was proposed that financial aid counseling be reinstated prior to allowing a Title IV recipient to completely withdraw from classes. A hold process was instituted requiring students to be counseled ahead of withdrawal with the intent of reducing the aggregate amount owed to the University.
- ECSI services were integrated with Banner, replacing Campus Loan Manager as the solution to monitor and track Perkins accounts. Future plans include the expansion of ECSI to manage all past due accounts.
- The in-house developed FUEL package was pre-released to all YSU deans, chairpersons, and faculty. FUEL, an acronym for Frequently Used Email List, facilitates the generation of targeted announcements and mass emails to students, faculty, and staff. In late February, FUEL is scheduled to replace the email-roster capability currently available through the MyYSU portal.

### **ITS Operations – T. Cross**

- Microsoft upgraded our Office 365 Tenet from an Exchange 2010 backend to an Exchange 2013 backend on January 4, 2014.
- Sub-area IT Infrastructure Engineering (ITIE) of ITS Operations was renamed to Network Architecture and Engineering (NAE) to better reflect their function.
- NAE upgraded WebFOCUS and moved its services to an open systems operating system to facilitate new functionalities required for the Business Intelligence (BI) initiative.
- Creation of Identity Vault and redesign of the Directory structure and processes was completed by NAE for the Password Self-Service (PSS) implementation. Beginning in February, PSS will be delivered with a phased approach using ITS staff serving as its first candidate.
- NAE used the planned campus-wide power outage on December 26, 2013 as an opportune time to reconfigure computer hardware equipment and rack placement in our efforts to reduce floor space requirements as part of our plans to reduce our future energy, cooling, and fire suppression requirements. NAE also upgraded our SAN during this outage.
- Next phase of the VMware Consolidation Project is on hold until data center network needs are addressed.
- NAE and Network Telecommunications (Telecom) reviewed proposals from multiple vendors for our data center network needs. Brocade equipment was chosen, purchased, and physically installed. Our initial planning meeting for the Brocade implementation has taken place.

- NAE and Network Telecom completed the planning phase of the Tod Hall basement data center redesign for disaster recovery and space consolidation. This is another effort to reduce our future energy, cooling, and fire suppression requirements.
- Prior to the December 26, 2013 campus-wide power outage, Network Telecom implemented their spare building switch with patch cables in Clingan-Waddell Hall bypassing the Westinghouse building in order to maintain the network for the University Police.
- Network Telecom continues working with the Campus Technology Support group on the Domain rollup and Q2 network upgrades.
- Network Telecom is working with Johnson Controls to upgrade environmental control points in DeBartolo Hall and Cushwa Hall.
- Network Telecom replaced telephones in the dorm staff offices with IP phones and the resident assistants' telephones with IP phones.
- Network Telecom added two (2) wireless access points to the lower level of Bliss Hall and three (3) in the Wick House.

#### **Network Security – F. Betsa**

- The upgrade of the CISCO Secure Access Control Servers (ACS) is in the final phases. The ACS supplies secure authentication to various equipment on campus. It gives administrative access to switches and other network equipment for user accounts with higher levels of access. It also provides authentication for regular users to the wireless and the Virtual Private Network (VPN).
- Implementation of a Symantec anti-virus solution as a replacement of the current McAfee solution has begun. The new solution will be managed through the university Alteris system by the Campus Technology Support (CTS) group.
- Upgrade to the Tenable Security Center and Passive Vulnerability Scanner have been completed and implemented. This system provides the necessary scanning for PCI compliancy for the University.
- In conjunction with University Police and Housing Services, an upgrade to the University CCTV storage equipment is completed allowing for the expansion for the CCTV capabilities and areas.
- Completed the upgrade of the University's malware protection system from Palo Alto. The system will help protect University resources, students, and employees from malicious software on the Internet. It also provides user feedback when potentially dangerous interactions occur on the Internet.

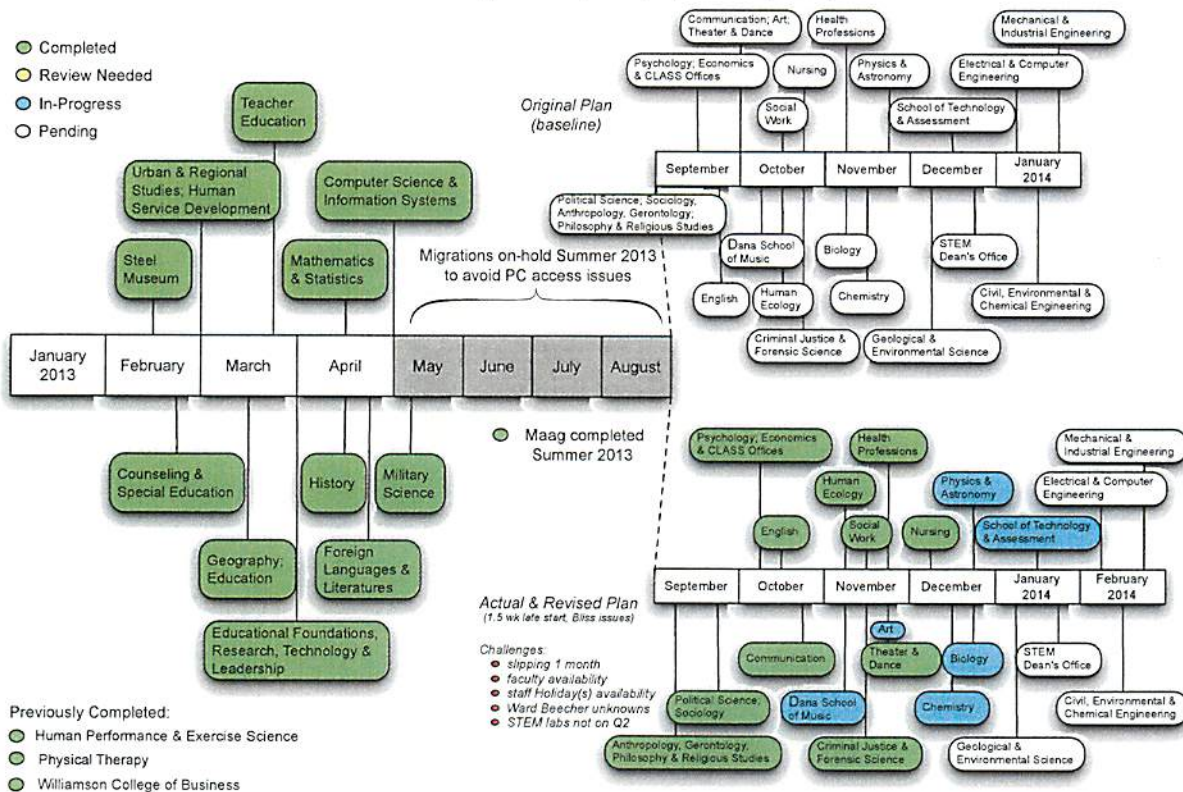


## Media & Academic Computing – M. Hrishenko

During the fourth quarter of calendar year 2013, units within Media & Academic Computing (M&AC) resolved over 3,950 service requests from students, faculty, and staff to assist with technology issues. Complimenting these efforts are the following achievements:

- Enterprise domain (multiyear) project nearly complete (see diagram below). *This project creates a consistently managed YSU computer environment based upon standards and testing and improves the ability to maintain technology and deliver services. Major project achievements include:*
  - *On-site assessment, clean up & migration of over 4,000 campus computers*
  - *Reconfiguration all networked printers on campus*
  - *Installation of Symantec Management agent permitting automated maintenance*
  - *Moving over 4500 devices from the legacy to the upgraded Q2 YSU network*
  - *Ensuring appropriate user account permissions for work needs of computer*

### Revised Domain Migration Timeline for YSU Academic Departments 2013 Through February 2014 (projected completion)



M.Hrshenko 20140121

- Windows XP migration project. *The Windows XP operating system, which approximately 900 campus computers still use, is being discontinued by Microsoft April, 2014. Each computer still running Windows XP must be assessed from a hardware perspective to determine if it is capable of running the next operating system and, if not, replaced. Data collection is underway to determine exactly how many computers are affected, their location and use.*

- Eleven additional classrooms outfitted with permanent multimedia technology. *The following buildings and rooms were upgraded to included standard multimedia technology:*
  - Cushwa Hall
    - 1511, 1515, 1519, 3336
  - DeBartolo Hall
    - B35, B38, B45, B48, B50, 299
  - Maag Library
    - 159
  
- Costs reduced nearly 50% per room for new permanent multimedia classrooms. *A review of available multimedia technology, input from colleagues at other institutions and a reduced reliance on A/V contractors combined to achieve substantial costs avoidance. Three newly remodeled classrooms in the College of Health & Human Services (1511, 1515, and 1519) were the first to benefit from this effort (original estimate of \$58,000 reduced to an actual cost of \$31,787). Going forward, the estimated base cost of a standard multimedia classroom is now \$10,600.*
  
- Moka5 product for delivery and management of a YSU desktop and software on student-owned computers demonstrated at a faculty workshop. *Moka5 can be licensed to deliver a YSU configured and maintained desktop to non-YSU computers. A “virtual” computer is created on the user’s device that runs in a “container” separate from that device’s existing desktop. Benefits include:*
  - *A standardized desktop (i.e., the same desktop) on different computers*
  - *A YSU desktop isolated from the existing desktop for privacy and security*
  - *The ability to update and maintain many desktops by updating one desktop*
  - *The ability to restrict, suspend use and/or eliminate the desktop*
  - *The ability for the user to use the YSU desktop whether or not they are connected to a network*